


## Product datasheet

# Anti-CAP1 antibody ab96354

★★★★★ 1 Abreviews 2 References 2 Images

### Overview

---

<b>Product name</b>	Anti-CAP1 antibody
<b>Description</b>	Rabbit polyclonal to CAP1
<b>Host species</b>	Rabbit
<b>Tested applications</b>	<b>Suitable for:</b> WB, IHC-P
<b>Species reactivity</b>	<b>Reacts with:</b> Human <b>Predicted to work with:</b> Mouse, Rat, Cow 
<b>Immunogen</b>	Recombinant fragment corresponding to a region within amino acids 266-462 of Human CAP1 (NP_001099000)
<b>General notes</b>	<p>Reproducibility is key to advancing scientific discovery and accelerating scientists' next breakthrough.</p> <p>Abcam is leading the way with our range of recombinant antibodies, knockout-validated antibodies and knockout cell lines, all of which support improved reproducibility.</p> <p>We are also planning to innovate the way in which we present recommended applications and species on our product datasheets, so that only applications &amp; species that have been tested in our own labs, our suppliers or by selected trusted collaborators are covered by our Abpromise™ guarantee.</p> <p>In preparation for this, we have started to update the applications &amp; species that this product is Abpromise guaranteed for.</p> <p>We are also updating the applications &amp; species that this product has been “predicted to work with,” however this information is not covered by our Abpromise guarantee.</p> <p>Applications &amp; species from publications and Abreviews that have not been tested in our own labs or in those of our suppliers are not covered by the Abpromise guarantee.</p> <p>Please check that this product meets your needs before purchasing. If you have any questions, special requirements or concerns, please send us an inquiry and/or contact our Support team ahead of purchase. Recommended alternatives for this product can be found below, as well as customer reviews and Q&amp;As.</p>

### Properties

---

<b>Form</b>	Liquid
<b>Storage instructions</b>	Shipped at 4°C. Upon delivery aliquot and store at -20°C or -80°C. Avoid repeated freeze / thaw

cycles.

**Storage buffer**

pH: 7.00

Preservative: 0.01% Thimerosal (merthiolate)

Constituents: 1.21% Tris, 0.75% Glycine, 10% Glycerol (glycerin, glycerine)

**Purity**

Immunogen affinity purified

**Clonality**

Polyclonal

**Isotype**

IgG

**Applications**

Our [Abpromise guarantee](#) covers the use of **ab96354** in the following tested applications.

The application notes include recommended starting dilutions; optimal dilutions/concentrations should be determined by the end user.

Application	Abreviews	Notes
WB	★★★★☆	1/500 - 1/3000. Predicted molecular weight: 52 kDa.
IHC-P		1/100 - 1/500.

**Target**

**Function**

Directly regulates filament dynamics and has been implicated in a number of complex developmental and morphological processes, including mRNA localization and the establishment of cell polarity.

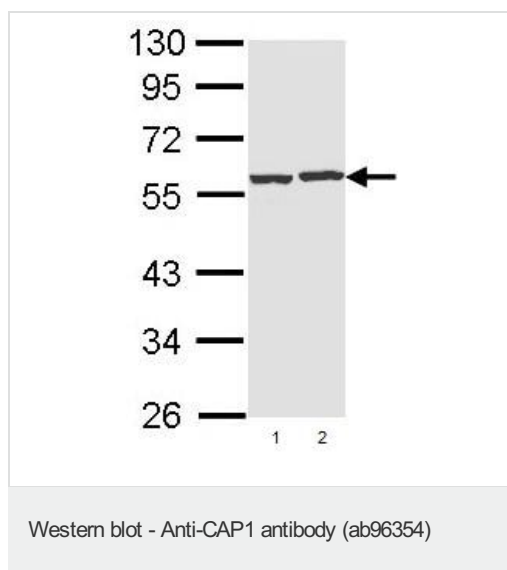
**Sequence similarities**

Belongs to the CAP family.  
Contains 1 C-CAP/cofactor C-like domain.

**Cellular localization**

Cell membrane.

**Images**



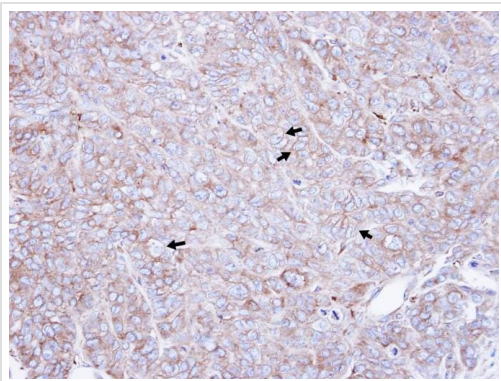
**All lanes** : Anti-CAP1 antibody (ab96354) at 1/1000 dilution

**Lane 1** : Hep G2 whole cell lysate

**Lane 2** : Raji whole cell lysate

Lysates/proteins at 30 µg per lane.

**Predicted band size:** 52 kDa



ab96354 at 1/500 dilution staining paraffin-embedded DLD1 xenograft

Immunohistochemistry (Formalin/PFA-fixed paraffin-embedded sections) - Anti-CAP1 antibody (ab96354)

**Please note:** All products are "FOR RESEARCH USE ONLY. NOT FOR USE IN DIAGNOSTIC PROCEDURES"

### **Our Abpromise to you: Quality guaranteed and expert technical support**

---

- Replacement or refund for products not performing as stated on the datasheet
- Valid for 12 months from date of delivery
- Response to your inquiry within 24 hours
  
- We provide support in Chinese, English, French, German, Japanese and Spanish
- Extensive multi-media technical resources to help you
- We investigate all quality concerns to ensure our products perform to the highest standards

If the product does not perform as described on this datasheet, we will offer a refund or replacement. For full details of the Abpromise, please visit <https://www.abcam.com/abpromise> or contact our technical team.

### **Terms and conditions**

---

- Guarantee only valid for products bought direct from Abcam or one of our authorized distributors