


Product datasheet

Anti-Carbonic Anhydrase 12/CA12 antibody ab230515

1 References 3 Images

Overview

Product name	Anti-Carbonic Anhydrase 12/CA12 antibody
Description	Rabbit polyclonal to Carbonic Anhydrase 12/CA12
Host species	Rabbit
Tested applications	Suitable for: WB, IHC-P
Species reactivity	Reacts with: Human Predicted to work with: Mouse, Rat 
Immunogen	Synthetic peptide within Human Carbonic Anhydrase 12/CA12 aa 231-280. The exact sequence is proprietary. Database link: O43570
Positive control	IHC-P: Human kidney and colon tissues. WB: MCF7 whole cell extract.
General notes	<p>Reproducibility is key to advancing scientific discovery and accelerating scientists' next breakthrough.</p> <p>Abcam is leading the way with our range of recombinant antibodies, knockout-validated antibodies and knockout cell lines, all of which support improved reproducibility.</p> <p>We are also planning to innovate the way in which we present recommended applications and species on our product datasheets, so that only applications & species that have been tested in our own labs, our suppliers or by selected trusted collaborators are covered by our Abpromise™ guarantee.</p> <p>In preparation for this, we have started to update the applications & species that this product is Abpromise guaranteed for.</p> <p>We are also updating the applications & species that this product has been “predicted to work with,” however this information is not covered by our Abpromise guarantee.</p> <p>Applications & species from publications and Abreviews that have not been tested in our own labs or in those of our suppliers are not covered by the Abpromise guarantee.</p> <p>Please check that this product meets your needs before purchasing. If you have any questions, special requirements or concerns, please send us an inquiry and/or contact our Support team ahead of purchase. Recommended alternatives for this product can be found below, as well as customer reviews and Q&As.</p>

Properties

Form	Liquid
Storage instructions	Shipped at 4°C. Store at +4°C short term (1-2 weeks). Upon delivery aliquot. Store at -20°C long term. Avoid freeze / thaw cycle.
Storage buffer	pH: 7.40 Preservative: 0.02% Sodium azide Constituents: PBS, 0.87% Sodium chloride, 50% Glycerol (PBS without Mg ²⁺ and Ca ²⁺).
Purity	Immunogen affinity purified
Clonality	Polyclonal
Isotype	IgG

Applications

Our [Abpromise guarantee](#) covers the use of **ab230515** in the following tested applications.

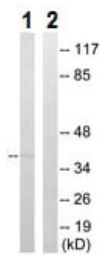
The application notes include recommended starting dilutions; optimal dilutions/concentrations should be determined by the end user.

Application	Abreviews	Notes
WB		1/500 - 1/1000. Predicted molecular weight: 39 kDa.
IHC-P		1/50. Perform heat mediated antigen retrieval before commencing with IHC staining protocol.

Target

Function	Reversible hydration of carbon dioxide.
Tissue specificity	Highly expressed in colon, kidney, prostate, intestine and activated lymphocytes. Expressed at much higher levels in the renal cell cancers than in surrounding normal kidney tissue. Moderately expressed in pancreas, ovary and testis.
Involvement in disease	Defects in CA12 are the cause of hyperchlorhidrosis isolated (HCHLH) [MIM:143860]. HCHLH is a disorder characterized by excessive sweating and increased sweat chloride levels. Affected individuals suffer from episodes of hyponatremic dehydration and report increased amounts of visible salt precipitates in sweat.
Sequence similarities	Belongs to the alpha-carbonic anhydrase family.
Cellular localization	Membrane.

Images



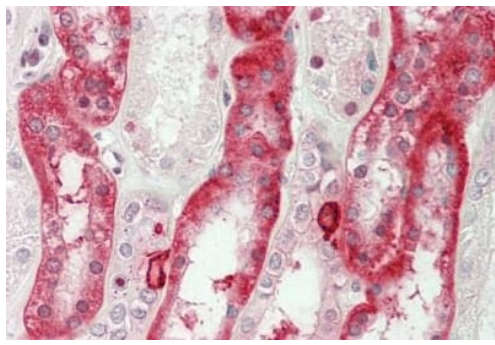
Western blot - Anti-Carbonic Anhydrase 12/CA12 antibody (ab230515)

All lanes : Anti-Carbonic Anhydrase 12/CA12 antibody (ab230515) at 1/500 dilution

Lane 1 : MCF7 (human breast adenocarcinoma cell line) cell extract

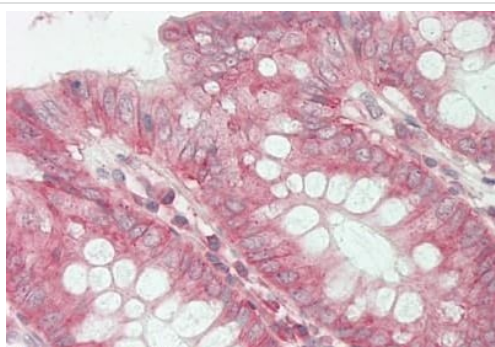
Lane 2 : MCF7 (human breast adenocarcinoma cell line) cell extract with synthesized peptide

Predicted band size: 39 kDa



Immunohistochemistry (Formalin/PFA-fixed paraffin-embedded sections) - Anti-Carbonic Anhydrase 12/CA12 antibody (ab230515)

Formalin-fixed, paraffin-embedded human kidney tissue stained for CA12 using ab230515 at 1/50 dilution in immunohistochemical analysis.



Immunohistochemistry (Formalin/PFA-fixed paraffin-embedded sections) - Anti-Carbonic Anhydrase 12/CA12 antibody (ab230515)

Formalin-fixed, paraffin-embedded human colon tissue stained for CA12 using ab230515 at 1/50 dilution in immunohistochemical analysis.

Our Abpromise to you: Quality guaranteed and expert technical support

- Replacement or refund for products not performing as stated on the datasheet
- Valid for 12 months from date of delivery
- Response to your inquiry within 24 hours

- We provide support in Chinese, English, French, German, Japanese and Spanish
- Extensive multi-media technical resources to help you
- We investigate all quality concerns to ensure our products perform to the highest standards

If the product does not perform as described on this datasheet, we will offer a refund or replacement. For full details of the Abpromise, please visit <https://www.abcam.com/abpromise> or contact our technical team.

Terms and conditions

- Guarantee only valid for products bought direct from Abcam or one of our authorized distributors