


Product datasheet

Anti-Carbonic Anhydrase 1/CA1 antibody - N-terminal ab229606

1 Image

Overview

Product name	Anti-Carbonic Anhydrase 1/CA1 antibody - N-terminal
Description	Rabbit polyclonal to Carbonic Anhydrase 1/CA1 - N-terminal
Host species	Rabbit
Tested applications	Suitable for: WB
Species reactivity	Reacts with: Mouse Predicted to work with: Dog, Human, Chimpanzee 
Immunogen	Synthetic peptide within Human Carbonic Anhydrase 1/CA1 (N terminal). The exact sequence is proprietary. Carrier protein conjugated Database link: P00915
Positive control	WB: Mouse spleen tissue extract.
General notes	This product was previously labelled as Carbonic Anhydrase I

Properties

Form	Liquid
Storage instructions	Shipped at 4°C. Store at +4°C short term (1-2 weeks). Upon delivery aliquot. Store at -20°C long term. Avoid freeze / thaw cycle.
Storage buffer	pH: 7.00 Preservative: 0.025% Proclin Constituents: PBS, 20% Glycerol
Purity	Immunogen affinity purified
Clonality	Polyclonal
Isotype	IgG

Applications

Our [Abpromise guarantee](#) covers the use of **ab229606** in the following tested applications.

The application notes include recommended starting dilutions; optimal dilutions/concentrations should be determined by the end user.

Application	Abreviews	Notes
WB		1/500 - 1/3000. Predicted molecular weight: 28 kDa.

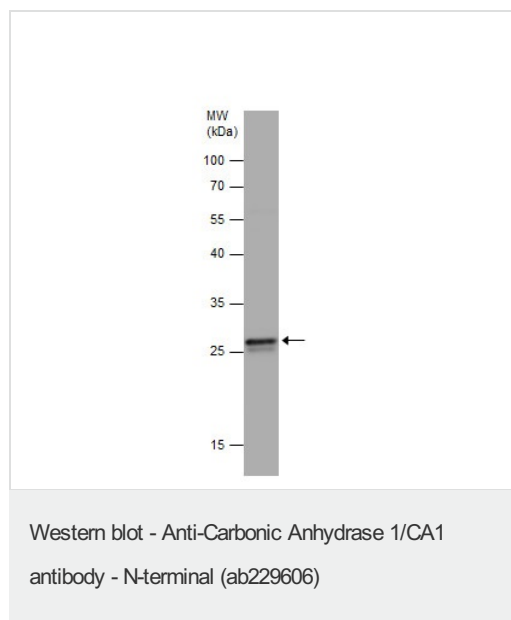
Target

Function Reversible hydration of carbon dioxide. Can hydrates cyanamide to urea.

Sequence similarities Belongs to the alpha-carbonic anhydrase family.

Cellular localization Cytoplasm.

Images



Anti-Carbonic Anhydrase 1/CA1 antibody - N-terminal (ab229606)
at 1/1000 dilution + Mouse spleen tissue extract at 50 µg

Developed using the ECL technique.

Predicted band size: 28 kDa

12% SDS-PAGE gel.

Please note: All products are "FOR RESEARCH USE ONLY. NOT FOR USE IN DIAGNOSTIC PROCEDURES"

Our Abpromise to you: Quality guaranteed and expert technical support

- Replacement or refund for products not performing as stated on the datasheet
- Valid for 12 months from date of delivery
- Response to your inquiry within 24 hours
- We provide support in Chinese, English, French, German, Japanese and Spanish
- Extensive multi-media technical resources to help you
- We investigate all quality concerns to ensure our products perform to the highest standards

If the product does not perform as described on this datasheet, we will offer a refund or replacement. For full details of the Abpromise, please visit <https://www.abcam.com/abpromise> or contact our technical team.

Terms and conditions

- Guarantee only valid for products bought direct from Abcam or one of our authorized distributors