




Product datasheet

Anti-Carbonic Anhydrase 3/CA3 antibody ab196835

4 Images

Overview

Product name	Anti-Carbonic Anhydrase 3/CA3 antibody
Description	Rabbit polyclonal to Carbonic Anhydrase 3/CA3
Host species	Rabbit
Tested applications	Suitable for: IHC-P, WB, ICC/IF
Species reactivity	Reacts with: Mouse, Rat, Human Predicted to work with: Horse, Cow, Pig 
Immunogen	Recombinant full length protein corresponding to Human Carbonic Anhydrase 3/CA3 aa 1-260. Sequence: MAKEWGYASHNGPDHWHELFPNAKGENQSPVELHTKDI RHDPQLQPWSVS YDGGSAKTILNNGKTCRVVFDITYDRSMLRGGPLPGPYRL RQFHLHWGSS DDHGSEHTVDGVKYAAELHLVHWNPKYNTFKEALKQRD GIAVIGIFLKIG HENGEFQIFLDALDKIKTKGKEAPFTKFDPSCLFPACRDY WTYQGSFTTP PCEECVWLLLKEPMTVSSDQMAKLRSLSSAENEPPVP LVSNWRPPQPINNRVVRASFK Database link: P07451  Run BLAST with  Run BLAST with
Positive control	Skeletal Muscle (Mouse) Whole Cell Lysate (ab3869) can be used as a positive control in WB. Mouse kidney, lung and skeletal muscle extracts; Rat testis tissue; HeLa cells.
General notes	This product was previously labelled as Carbonic Anhydrase III

Reproducibility is key to advancing scientific discovery and accelerating scientists' next breakthrough.

Abcam is leading the way with our range of recombinant antibodies, knockout-validated antibodies and knockout cell lines, all of which support improved reproducibility.

We are also planning to innovate the way in which we present recommended applications and species on our product datasheets, so that only applications & species that have been tested in our own labs, our suppliers or by selected trusted collaborators are covered by our Abpromise™

guarantee.

In preparation for this, we have started to update the applications & species that this product is Abpromise guaranteed for.

We are also updating the applications & species that this product has been “predicted to work with,” however this information is not covered by our Abpromise guarantee.

Applications & species from publications and Abreviews that have not been tested in our own labs or in those of our suppliers are not covered by the Abpromise guarantee.

Please check that this product meets your needs before purchasing. If you have any questions, special requirements or concerns, please send us an inquiry and/or contact our Support team ahead of purchase. Recommended alternatives for this product can be found below, as well as customer reviews and Q&As.

Properties

Form	Liquid
Storage instructions	Shipped at 4°C. Store at +4°C short term (1-2 weeks). Upon delivery aliquot. Store at -20°C long term. Avoid freeze / thaw cycle.
Storage buffer	pH: 7.40 Preservative: 0.02% Sodium azide Constituents: 49% PBS, 50% Glycerol (glycerin, glycerine), 0.87% Sodium chloride PBS without Mg ²⁺ and Ca ²⁺ .
Purity	Immunogen affinity purified
Clonality	Polyclonal
Isotype	IgG

Applications

Our [Abpromise guarantee](#) covers the use of **ab196835** in the following tested applications.

The application notes include recommended starting dilutions; optimal dilutions/concentrations should be determined by the end user.

Application	Abreviews	Notes
IHC-P		1/50 - 1/100.
WB		1/500 - 1/2000. Predicted molecular weight: 30 kDa.
ICC/IF		1/50 - 1/200.

Target

Function	Reversible hydration of carbon dioxide.
Tissue specificity	Muscle specific.
Sequence similarities	Belongs to the alpha-carbonic anhydrase family.

Developmental stage

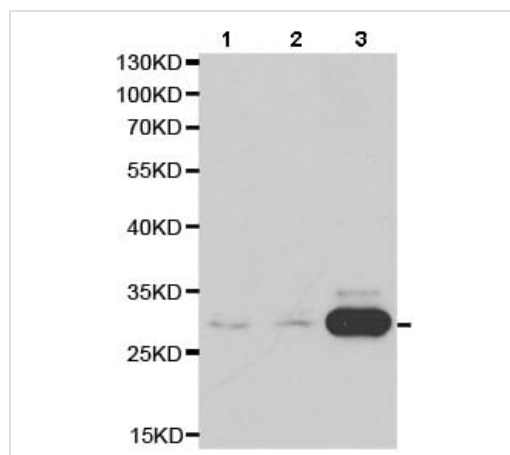
At 6 weeks gestation, transcripts accumulate at low levels in the somites and at high levels throughout the notochord. As gestation continues, CA3 becomes abundant in all developing muscle masses and continues at high to moderate levels in the notochord.

Post-translational modifications

S-glutathionylated in hepatocytes under oxidative stress.

Cellular localization

Cytoplasm.

Images

Western blot - Anti-Carbonic Anhydrase 3/CA3 antibody (ab196835)

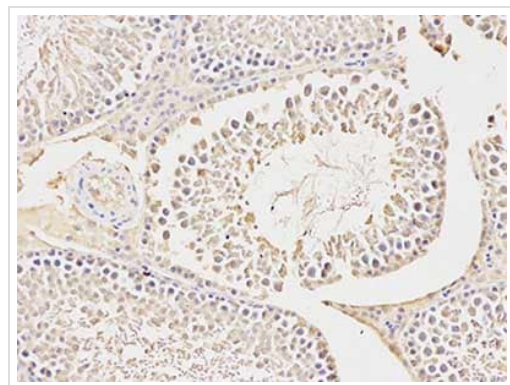
All lanes : Anti-Carbonic Anhydrase 3/CA3 antibody (ab196835) at 1/500 dilution

Lane 1 : Mouse kidney extract

Lane 2 : Mouse lung extract

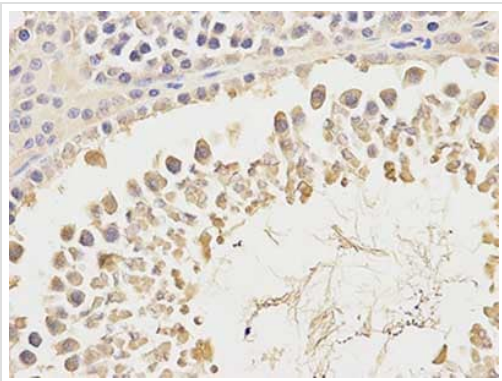
Lane 3 : Mouse skeletal muscle extract

Predicted band size: 30 kDa



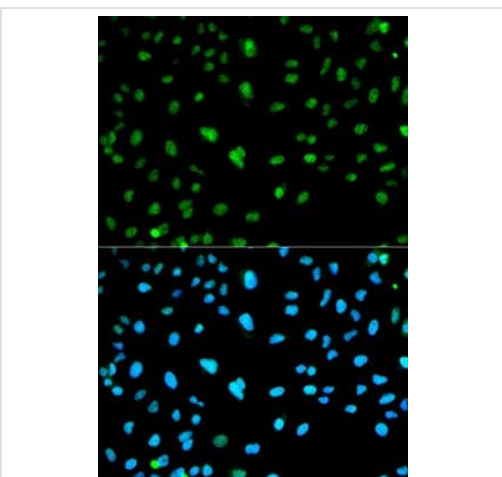
Immunohistochemistry (Formalin/PFA-fixed paraffin-embedded sections) - Anti-Carbonic Anhydrase 3/CA3 antibody (ab196835)

Immunohistochemical analysis of paraffin-embedded Rat testis tissue labeling Carbonic Anhydrase 3/CA3 with ab196835 at 1/200 dilution.



Immunohistochemical analysis of paraffin-embedded Rat testis tissue labeling Carbonic Anhydrase 3/CA3 with ab196835 at 1/200 dilution.

Immunohistochemistry (Formalin/PFA-fixed paraffin-embedded sections) - Anti-Carbonic Anhydrase 3/CA3 antibody (ab196835)



Immunofluorescent analysis of HeLa cells labeling Carbonic Anhydrase III/CA3 with ab196835 at 1/50 dilution. Blue: DAPI for nuclear staining.

Immunocytochemistry/ Immunofluorescence - Anti-Carbonic Anhydrase 3/CA3 antibody (ab196835)

Please note: All products are "FOR RESEARCH USE ONLY. NOT FOR USE IN DIAGNOSTIC PROCEDURES"

Our Abpromise to you: Quality guaranteed and expert technical support

- Replacement or refund for products not performing as stated on the datasheet
- Valid for 12 months from date of delivery
- Response to your inquiry within 24 hours
- We provide support in Chinese, English, French, German, Japanese and Spanish

- Extensive multi-media technical resources to help you
- We investigate all quality concerns to ensure our products perform to the highest standards

If the product does not perform as described on this datasheet, we will offer a refund or replacement. For full details of the Abpromise, please visit <https://www.abcam.com/abpromise> or contact our technical team.

Terms and conditions

- Guarantee only valid for products bought direct from Abcam or one of our authorized distributors