



Product datasheet

Anti-Carbonic Anhydrase 6/CA6 antibody ab231045

2 Images

Overview

Product name	Anti-Carbonic Anhydrase 6/CA6 antibody
Description	Rabbit polyclonal to Carbonic Anhydrase 6/CA6
Host species	Rabbit
Tested applications	Suitable for: WB
Species reactivity	Reacts with: Rat
Immunogen	<p>Recombinant fragment (His-T7-tag) corresponding to Rat Carbonic Anhydrase 6/CA6 aa 147-275. (Expressed in E.coli).</p> <p>Sequence:</p> <p>TYEKAVDQPDGLAVMAVLVKVEDYTENDYYSTFISELE NVKYTGQTTTLR NVNIRNMLPGDIRHYTYQGSLTTPPC TENVKWVFVQD SATISKAQAERI ENAVMDHHNQ TIRNGYRRTQPLHNRVVEA</p> <p>Database link: F1LQ08</p> <p style="text-align: right;">  Run BLAST with  Run BLAST with </p>
Positive control	WB: Rat salivary gland lysate; Recombinant rat Carbonic Anhydrase 6/CA6 protein.
General notes	Previously labelled as CA6.

Properties

Form	Liquid
Storage instructions	Shipped at 4°C. Store at +4°C short term (1-2 weeks). Upon delivery aliquot. Store at -20°C long term. Avoid freeze / thaw cycle.
Storage buffer	<p>pH: 7.40</p> <p>Preservative: 0.02% Sodium azide</p> <p>Constituents: PBS, 50% Glycerol</p>
Purity	Immunogen affinity purified
Purification notes	ab231045 was purified by antigen-specific affinity chromatography followed by Protein A affinity chromatography.
Clonality	Polyclonal

Isotype

IgG

Applications

Our [Abpromise guarantee](#) covers the use of **ab231045** in the following tested applications.

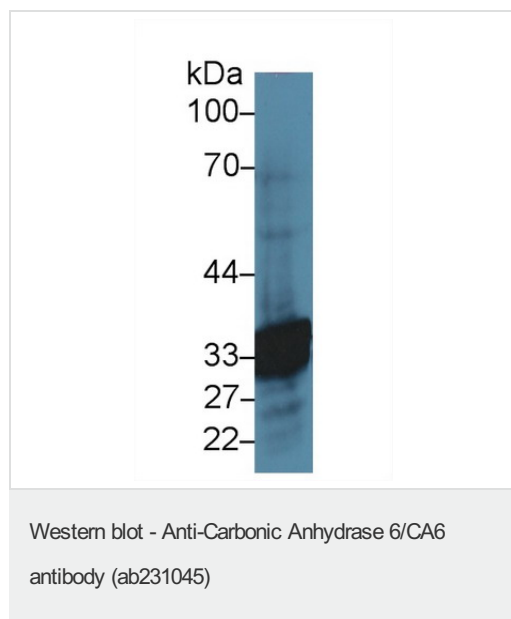
The application notes include recommended starting dilutions; optimal dilutions/concentrations should be determined by the end user.

Application	Abreviews	Notes
WB		Use a concentration of 0.2 - 2 µg/ml. Predicted molecular weight: 36 kDa.

Target

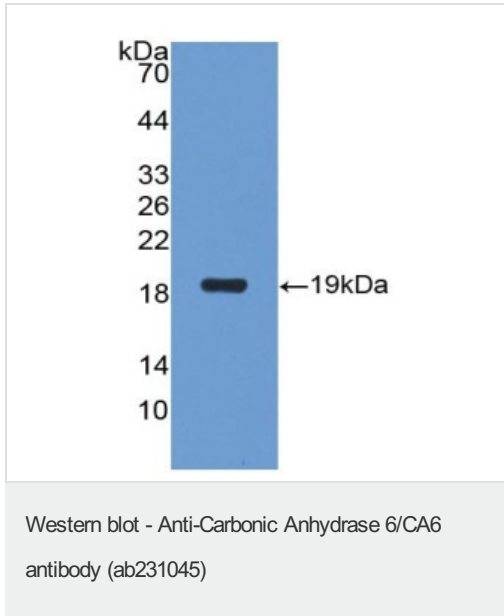
Function	Reversible hydration of carbon dioxide. Its role in saliva is unknown.
Tissue specificity	Major constituent of saliva.
Sequence similarities	Belongs to the alpha-carbonic anhydrase family.
Cellular localization	Secreted.

Images



Anti-Carbonic Anhydrase 6/CA6 antibody (ab231045) at 2 µg/ml +
Rat salivary gland lysate

Predicted band size: 36 kDa



Anti-Carbonic Anhydrase 6/CA6 antibody (ab231045) at 2 µg/ml +
Recombinant rat CA-VI protein

Predicted band size: 36 kDa

Please note: All products are "FOR RESEARCH USE ONLY. NOT FOR USE IN DIAGNOSTIC PROCEDURES"

Our Abpromise to you: Quality guaranteed and expert technical support

- Replacement or refund for products not performing as stated on the datasheet
- Valid for 12 months from date of delivery
- Response to your inquiry within 24 hours
- We provide support in Chinese, English, French, German, Japanese and Spanish
- Extensive multi-media technical resources to help you
- We investigate all quality concerns to ensure our products perform to the highest standards

If the product does not perform as described on this datasheet, we will offer a refund or replacement. For full details of the Abpromise, please visit <https://www.abcam.com/abpromise> or contact our technical team.

Terms and conditions

- Guarantee only valid for products bought direct from Abcam or one of our authorized distributors