

Product datasheet

Anti-Carboxypeptidase B2 antibody [EPR7858] ab133679

Recombinant RabMAb

3 Images

Overview

Product name	Anti-Carboxypeptidase B2 antibody [EPR7858]
Description	Rabbit monoclonal [EPR7858] to Carboxypeptidase B2
Host species	Rabbit
Tested applications	Suitable for: WB Unsuitable for: IHC-P or IP
Species reactivity	Reacts with: Mouse, Rat, Human
Immunogen	Synthetic peptide corresponding to a region within Human Carboxypeptidase B2 (UniProt ID: Q96IY4).
Positive control	Human platelet and plasma lysates
General notes	

This product is a recombinant monoclonal antibody, which offers several advantages including:

- High batch-to-batch consistency and reproducibility
- Improved sensitivity and specificity
- Long-term security of supply
- Animal-free production

For more information [see here](#).

Our RabMAb[®] technology is a patented hybridoma-based technology for making rabbit monoclonal antibodies. For details on our patents, please refer to [RabMAb[®] patents](#).

Reproducibility is key to advancing scientific discovery and accelerating scientists' next breakthrough.

Abcam is leading the way with our range of recombinant antibodies, knockout-validated antibodies and knockout cell lines, all of which support improved reproducibility.

We are also planning to innovate the way in which we present recommended applications and species on our product datasheets, so that only applications & species that have been tested in our own labs, our suppliers or by selected trusted collaborators are covered by our Abpromise[™] guarantee.

In preparation for this, we have started to update the applications & species that this product is

Abpromise guaranteed for.

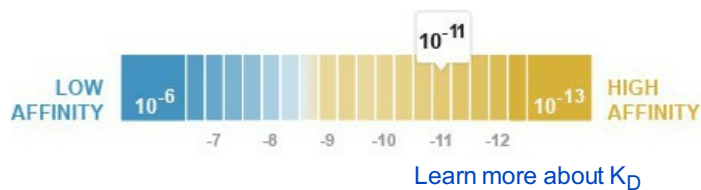
We are also updating the applications & species that this product has been “predicted to work with,” however this information is not covered by our Abpromise guarantee.

Applications & species from publications and Abreviews that have not been tested in our own labs or in those of our suppliers are not covered by the Abpromise guarantee.

Please check that this product meets your needs before purchasing. If you have any questions, special requirements or concerns, please send us an inquiry and/or contact our Support team ahead of purchase. Recommended alternatives for this product can be found below, as well as customer reviews and Q&As.

Properties

Form	Liquid
Storage instructions	Shipped at 4°C. Upon delivery aliquot and store at -20°C. Avoid repeated freeze / thaw cycles.
Dissociation constant (K_D)	K _D = 3.67 x 10 ⁻¹¹ M



Storage buffer	pH: 7.20 Preservative: 0.01% Sodium azide Constituents: 9% PBS, 40% Glycerol (glycerin, glycerine), 0.05% BSA, 50% Tissue culture supernatant
Purity	Tissue culture supernatant
Clonality	Monoclonal
Clone number	EPR7858
Isotype	IgG

Applications

Our [Abpromise guarantee](#) covers the use of **ab133679** in the following tested applications.

The application notes include recommended starting dilutions; optimal dilutions/concentrations should be determined by the end user.

Application	Abreviews	Notes
WB		1/1000 - 1/10000. Predicted molecular weight: 48 kDa.

Application notes Is unsuitable for IHC-P or IP.

Target

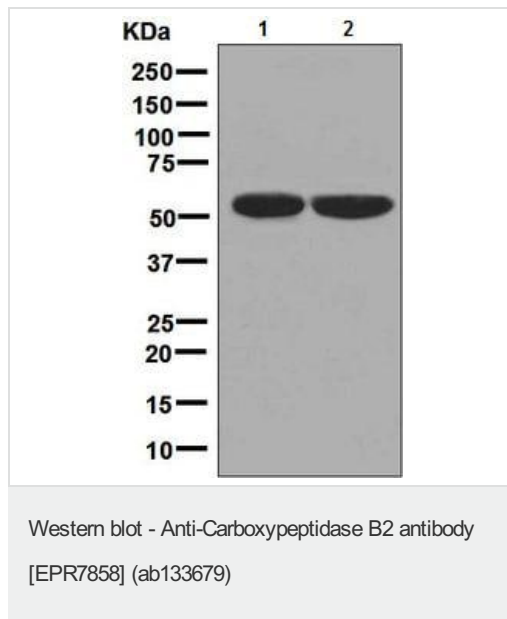
Relevance This protein belongs to a family of Zn-containing metalloproteases specific to C-terminal lysine and arginine residues. It circulates in plasma as a zymogen with molecular weight of 55

kDa (401 amino acid residues; pI 5.0). Being activated by thrombin-thrombomodulin complex during blood coagulation, it exerts carboxypeptidase activity. Activated carboxypeptidase B2 removes C-terminal lysine residues from fibrin, which is necessary for plasminogen binding to fibrin. This prevents plasminogen from activation into plasmin and retards the lysis of a fibrin clot. The concentration in plasma of healthy people is 5 – 10 µg/ml. High plasma levels were found in patients with stable angina pectoris and angiographically verified coronary artery disease. Elevated concentration in blood is considered as a risk factor for venous thrombosis. A deficiency might contribute to the severity of bleeding disorders in hemophilias A and B, and decreased levels are found in chronic liver disease.

Cellular localization

Secreted

Images



All lanes : Anti-Carboxypeptidase B2 antibody [EPR7858] (ab133679) at 1/1000 dilution

Lane 1 : Human platelet lysate

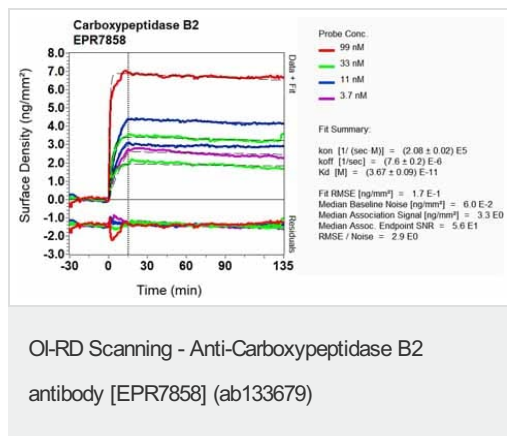
Lane 2 : Human plasma lysate

Lysates/proteins at 10 µg per lane.

Secondary

All lanes : Goat anti-rabbit HRP conjugated antibody at 1/2000 dilution

Predicted band size: 48 kDa



Equilibrium dissociation constant (K_D)

Learn more about K_D

[Click here to learn more about \$K_D\$](#)

Why choose a recombinant antibody?



Research with confidence
Consistent and reproducible results



Long-term and scalable supply
Recombinant technology



Success from the first experiment
Confirmed specificity



Ethical standards compliant
Animal-free production

Anti-Carboxypeptidase B2 antibody [EPR7858]
(ab133679)

Please note: All products are "FOR RESEARCH USE ONLY. NOT FOR USE IN DIAGNOSTIC PROCEDURES"

Our Abpromise to you: Quality guaranteed and expert technical support

- Replacement or refund for products not performing as stated on the datasheet
- Valid for 12 months from date of delivery
- Response to your inquiry within 24 hours
- We provide support in Chinese, English, French, German, Japanese and Spanish
- Extensive multi-media technical resources to help you
- We investigate all quality concerns to ensure our products perform to the highest standards

If the product does not perform as described on this datasheet, we will offer a refund or replacement. For full details of the Abpromise, please visit <https://www.abcam.com/abpromise> or contact our technical team.

Terms and conditions

- Guarantee only valid for products bought direct from Abcam or one of our authorized distributors