

Product datasheet

Anti-Carboxypeptidase B/CPB antibody - N-terminal
ab170724

4 Images

Overview

Product name	Anti-Carboxypeptidase B/CPB antibody - N-terminal
Description	Rabbit polyclonal to Carboxypeptidase B/CPB - N-terminal
Host species	Rabbit
Tested applications	Suitable for: WB, IHC-P, Flow Cyt, ICC/IF
Species reactivity	Reacts with: Human
Immunogen	Synthetic peptide within Human Carboxypeptidase B/CPB aa 16-45 (N terminal) conjugated to keyhole limpet haemocyanin. The exact sequence is proprietary. Database link: P15086
Positive control	Hela cells; Human pancreas tissue; K562 and Hela cell lysates.
General notes	This product was previously labelled as Carboxypeptidase B

Properties

Form	Liquid
Storage instructions	Shipped at 4°C. Store at +4°C short term (1-2 weeks). Upon delivery aliquot. Store at -20°C long term. Avoid freeze / thaw cycle.
Storage buffer	Preservative: 0.09% Sodium azide Constituent: 99% PBS
Purity	Immunogen affinity purified
Purification notes	ab170724 is purified through a protein A column, followed by peptide affinity purification.
Clonality	Polyclonal
Isotype	IgG

Applications

Our [Abpromise guarantee](#) covers the use of **ab170724** in the following tested applications.

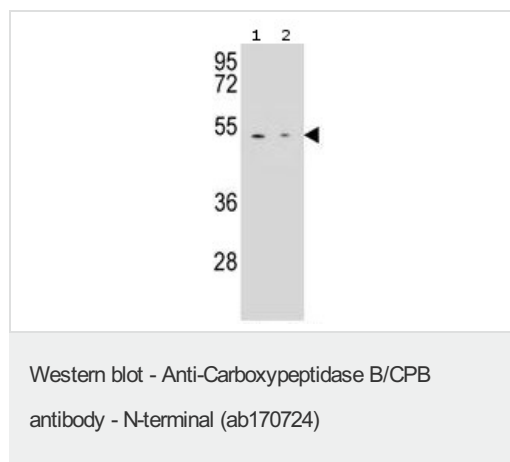
The application notes include recommended starting dilutions; optimal dilutions/concentrations should be determined by the end user.

Application	Abreviews	Notes
WB		1/100 - 1/500. Predicted molecular weight: 47 kDa.
IHC-P		1/10 - 1/50. Perform heat mediated antigen retrieval with citrate buffer pH 6 before commencing with IHC staining protocol.
Flow Cyt		1/10 - 1/50. ab171870 - Rabbit polyclonal IgG, is suitable for use as an isotype control with this antibody.
ICC/IF		1/10 - 1/50.

Target

Tissue specificity	Pancreas.
Sequence similarities	Belongs to the peptidase M14 family.
Cellular localization	Secreted.

Images



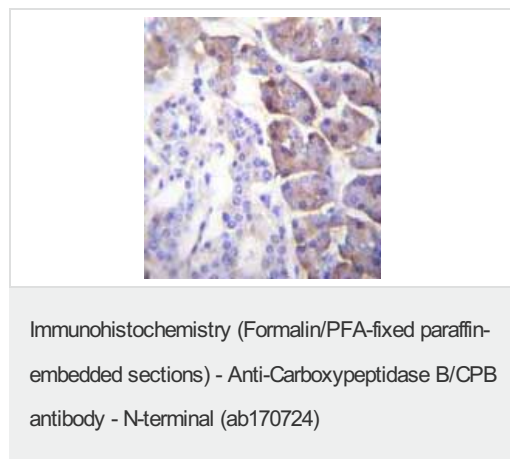
All lanes : Anti-Carboxypeptidase B/CPB antibody - N-terminal (ab170724) at 1/100 dilution

Lane 1 : K562 cell lysate

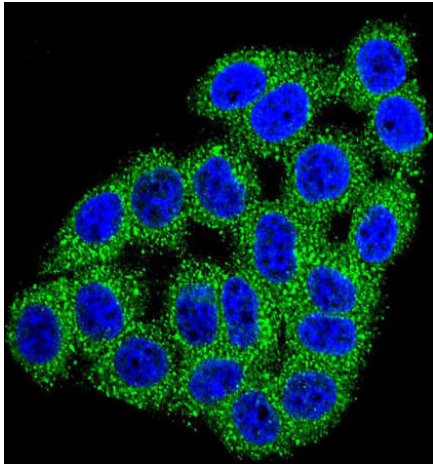
Lane 2 : Hela cell lysate

Lysates/proteins at 35 µg per lane.

Predicted band size: 47 kDa

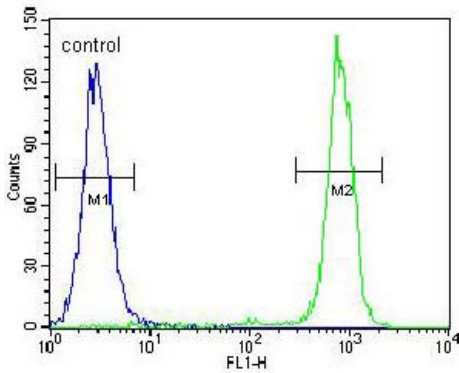


Immunohistochemical analysis of formalin-fixed, paraffin-embedded Human pancreas tissue labeling Carboxypeptidase B/CPB with ab170724 at 1/10 dilution followed by peroxidase conjugation of the secondary antibody and DAB staining.



Immunocytochemistry/ Immunofluorescence - Anti-Carboxypeptidase B/CPB antibody - N-terminal (ab170724)

Confocal immunofluorescent analysis of HeLa cells labeling Carboxypeptidase B/CPB with ab170724 at 1/10 dilution followed by Alexa Fluor 488-conjugated goat anti-rabbit IgG (green). DAPI was used to stain the cell nuclear (blue).



Flow Cytometry - Anti-Carboxypeptidase B/CPB antibody - N-terminal (ab170724)

Flow cytometric analysis of HeLa cells labeling Carboxypeptidase B/CPB with ab170724 at 1/10 dilution (right histogram) compared to negative control cells (left histogram). FITC-conjugated goat-anti-rabbit secondary antibodies were used for the analysis.

Please note: All products are "FOR RESEARCH USE ONLY AND ARE NOT INTENDED FOR DIAGNOSTIC OR THERAPEUTIC USE"

Our Abpromise to you: Quality guaranteed and expert technical support

- Replacement or refund for products not performing as stated on the datasheet
- Valid for 12 months from date of delivery
- Response to your inquiry within 24 hours
- We provide support in Chinese, English, French, German, Japanese and Spanish
- Extensive multi-media technical resources to help you
- We investigate all quality concerns to ensure our products perform to the highest standards

If the product does not perform as described on this datasheet, we will offer a refund or replacement. For full details of the Abpromise, please visit <https://www.abcam.com/abpromise> or contact our technical team.

Terms and conditions

- Guarantee only valid for products bought direct from Abcam or one of our authorized distributors