

Product datasheet

Anti-Carma 1/CARD11 antibody ab189167

★ ★ ★ ★ ★ 1 Abreviews 3 Images

Overview

Product name	Anti-Carma 1/CARD11 antibody
Description	Rabbit polyclonal to Carma 1/CARD11
Host species	Rabbit
Tested applications	Suitable for: ICC/IF, WB, IHC-P
Species reactivity	Reacts with: Mouse, Human
Immunogen	Synthetic peptide corresponding to Human Carma 1/CARD11 (C terminal). Database link: Q9BXL7
Positive control	Human spleen tissue; mouse spleen cells; mouse thymus cell lysate. The pattern of staining with this antibody is similar to that observed with ab113409 and ab115471 in that the reagent stains macrophages, mast cells, subsets of lymphocytes and plasma cells in various organs across the body. It also stains adrenal cortex, heart, kidney, small intestine epithelium, skeletal muscle, and pancreatic exocrine epithelium and Kupffer cells in the liver.
General notes	Previously labelled as CARD11.

Properties

Form	Liquid
Storage instructions	Shipped at 4°C. Store at +4°C short term (1-2 weeks). Upon delivery aliquot. Store at -20°C long term. Avoid freeze / thaw cycle.
Storage buffer	Preservative: 0.02% Sodium azide Constituent: 99% PBS
Purity	Immunogen affinity purified
Clonality	Polyclonal
Isotype	IgG

Applications

Our [Abpromise guarantee](#) covers the use of **ab189167** in the following tested applications.

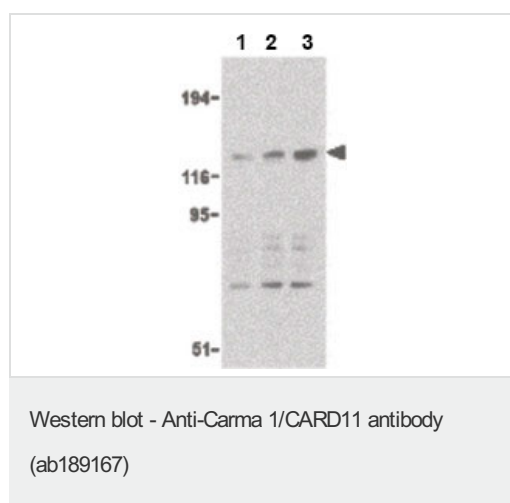
The application notes include recommended starting dilutions; optimal dilutions/concentrations should be determined by the end user.

Application	Abreviews	Notes
ICC/IF		Use a concentration of 20 µg/ml.
WB		Use a concentration of 0.5 - 2 µg/ml. Predicted molecular weight: 133 kDa.
IHC-P		Use a concentration of 5 µg/ml. Perform heat mediated antigen retrieval with citrate buffer pH 6 before commencing with IHC staining protocol.

Target

Function	Involved in the costimulatory signal essential for T-cell receptor (TCR)-mediated T-cell activation. Its binding to DPP4 induces T-cell proliferation and NF-kappa-B activation in a T-cell receptor/CD3-dependent manner. Activates NF-kappa-B via BCL10 and IKK. Stimulates the phosphorylation of BCL10.
Tissue specificity	Detected in adult peripheral blood leukocytes, thymus, spleen and liver. Also found in promyelocytic leukemia HL-60 cells, chronic myelogenous leukemia K562 cells, Burkitt's lymphoma Raji cells and colorectal adenocarcinoma SW480 cells. Not detected in HeLa S3, Molt-4, A549 and G431 cells.
Sequence similarities	Contains 1 CARD domain. Contains 1 guanylate kinase-like domain. Contains 1 PDZ (DHR) domain.
Post-translational modifications	Phosphorylation at Ser-559, Ser-644 and Ser-652 by PRKCBB leads to a shift from an inactive to an active form that activates the NF-kappa-B signaling.
Cellular localization	Cytoplasm. Membrane raft. Colocalized with DPP4 in membrane rafts.

Images



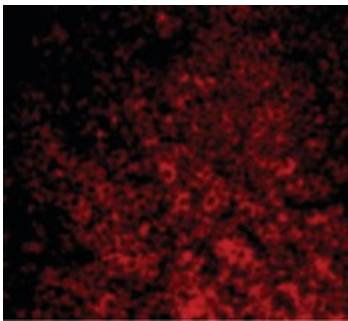
Lane 1 : Anti-Carma 1/CARD11 antibody (ab189167) at 0.5 µg/ml

Lane 2 : Anti-Carma 1/CARD11 antibody (ab189167) at 1 µg/ml

Lane 3 : Anti-Carma 1/CARD11 antibody (ab189167) at 2 µg/ml

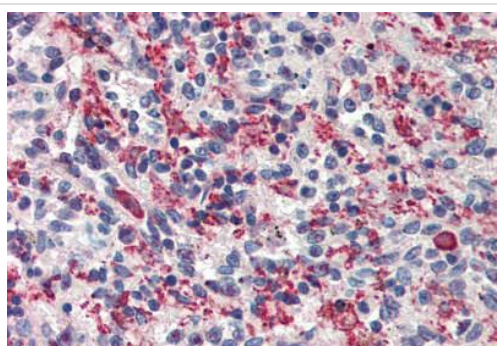
All lanes : Mouse thymus cell lysate

Predicted band size: 133 kDa



Immunocytochemistry/ Immunofluorescence - Anti-Carma 1/CARD11 antibody (ab189167)

Immunofluorescence analysis of mouse spleen cells cells, labeling Carma 1/CARD11 with ab189167 at 20 µg/ml.



Immunohistochemistry (Formalin/PFA-fixed paraffin-embedded sections) - Anti-Carma 1/CARD11 antibody (ab189167)

Immunohistochemical analysis of formalin-fixed, paraffin-embedded human spleen tissue, labeling Carma 1/CARD11 with ab189167 at 5 µg/ml. After incubation with the primary antibody, slides were incubated with biotinylated secondary antibody, followed by alkaline phosphatase-streptavidin and chromogen.

Please note: All products are "FOR RESEARCH USE ONLY. NOT FOR USE IN DIAGNOSTIC PROCEDURES"

Our Abpromise to you: Quality guaranteed and expert technical support

- Replacement or refund for products not performing as stated on the datasheet
- Valid for 12 months from date of delivery
- Response to your inquiry within 24 hours

- We provide support in Chinese, English, French, German, Japanese and Spanish
- Extensive multi-media technical resources to help you
- We investigate all quality concerns to ensure our products perform to the highest standards

If the product does not perform as described on this datasheet, we will offer a refund or replacement. For full details of the Abpromise, please visit <https://www.abcam.com/abpromise> or contact our technical team.

Terms and conditions

- Guarantee only valid for products bought direct from Abcam or one of our authorized distributors