

Product datasheet

Anti-Casein Kinase 1 alpha antibody [EPR1961(2)] ab108296

Recombinant RabMAb

★★★★☆ 2 Abreviews 9 References 5 Images

Overview

Product name	Anti-Casein Kinase 1 alpha antibody [EPR1961(2)]
Description	Rabbit monoclonal [EPR1961(2)] to Casein Kinase 1 alpha
Host species	Rabbit
Tested applications	Suitable for: WB
Species reactivity	Reacts with: Mouse, Rat, Human
Immunogen	Synthetic peptide corresponding to Human Casein Kinase 1 alpha aa 250-350.
Positive control	WB: MCF-7, HeLa, Jurkat, Rat brain lysates, RAW 264.7, PC-12 and HT-1376 cell lysates
General notes	<p>This product is a recombinant monoclonal antibody, which offers several advantages including:</p> <ul style="list-style-type: none"> - High batch-to-batch consistency and reproducibility - Improved sensitivity and specificity - Long-term security of supply - Animal-free production <p>For more information see here.</p> <p>Our RabMAb[®] technology is a patented hybridoma-based technology for making rabbit monoclonal antibodies. For details on our patents, please refer to RabMAb[®] patents.</p> <p>We are constantly working hard to ensure we provide our customers with best in class antibodies. As a result of this work we are pleased to now offer this antibody in purified format. We are in the process of updating our datasheets. The purified format is designated 'PUR' on our product labels. If you have any questions regarding this update, please contact our Scientific Support team.</p> <p>Reproducibility is key to advancing scientific discovery and accelerating scientists' next breakthrough.</p> <p>Abcam is leading the way with our range of recombinant antibodies, knockout-validated antibodies and knockout cell lines, all of which support improved reproducibility.</p> <p>We are also planning to innovate the way in which we present recommended applications and species on our product datasheets, so that only applications & species that have been tested in our own labs, our suppliers or by selected trusted collaborators are covered by our Abpromise[™] guarantee.</p> <p>In preparation for this, we have started to update the applications & species that this product is</p>

Abpromise guaranteed for.

We are also updating the applications & species that this product has been “predicted to work with,” however this information is not covered by our Abpromise guarantee.

Applications & species from publications and Abreviews that have not been tested in our own labs or in those of our suppliers are not covered by the Abpromise guarantee.

Please check that this product meets your needs before purchasing. If you have any questions, special requirements or concerns, please send us an inquiry and/or contact our Support team ahead of purchase. Recommended alternatives for this product can be found below, as well as customer reviews and Q&As.

Properties

Form	Liquid
Storage instructions	Shipped at 4°C. Store at +4°C short term (1-2 weeks). Upon delivery aliquot. Store at -20°C. Avoid freeze / thaw cycle. Stable for 12 months at -20°C.
Storage buffer	pH: 7.20 Preservative: 0.01% Sodium azide Constituents: 40% Glycerol, 0.05% BSA, 59% PBS
Purity	Protein A purified
Clonality	Monoclonal
Clone number	EPR1961(2)
Isotype	IgG

Applications

Our [Abpromise guarantee](#) covers the use of **ab108296** in the following tested applications.

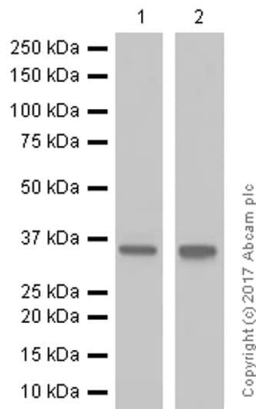
The application notes include recommended starting dilutions; optimal dilutions/concentrations should be determined by the end user.

Application	Abreviews	Notes
WB	★★★★★	1/1000. Detects a band of approximately 34 kDa (predicted molecular weight: 39 kDa). For unpurified use at 1/1000 - 1/10000

Target

Function	Casein kinases are operationally defined by their preferential utilization of acidic proteins such as caseins as substrates. It can phosphorylate a large number of proteins. Participates in Wnt signaling. Phosphorylates CTNNB1 at 'Ser-45'. May play a role in segregating chromosomes during mitosis.
Sequence similarities	Belongs to the protein kinase superfamily. CK1 Ser/Thr protein kinase family. Casein kinase I subfamily. Contains 1 protein kinase domain.
Cellular localization	Cytoplasm. Cytoplasm > cytoskeleton > centrosome. Chromosome > centromere > kinetochore. Nucleus speckle. Localizes to the centrosome in interphase cells, and to kinetochore fibers during

Images



Western blot - Anti-Casein Kinase 1 alpha antibody [EPR1961(2)] (ab108296)

All lanes : Anti-Casein Kinase 1 alpha antibody [EPR1961(2)] (ab108296) at 1/1000 dilution (purified)

Lane 1 : Jurkat (Human T cell leukemia T lymphocyte) whole cell lysates

Lane 2 : MCF7 (Human breast adenocarcinoma epithelial cell) whole cell lysates

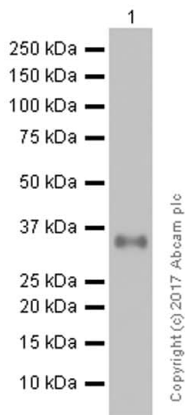
Lysates/proteins at 15 µg per lane.

Secondary

All lanes : Goat Anti-Rabbit IgG H&L (HRP) (ab97051) at 1/20000 dilution

Predicted band size: 39 kDa

Blocking and diluting buffer: 5% NFDM/TBST



Western blot - Anti-Casein Kinase 1 alpha antibody [EPR1961(2)] (ab108296)

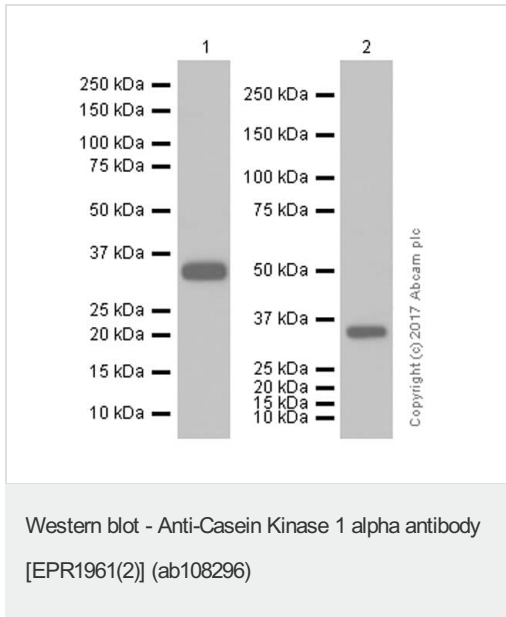
Anti-Casein Kinase 1 alpha antibody [EPR1961(2)] (ab108296) at 1/2000 dilution + RAW 264.7 (Mouse Abelson murine leukemia virus-induced tumor macrophage) whole cell lysates at 20 µg

Secondary

Goat Anti-Rabbit IgG H&L (HRP) (ab97051) at 1/20000 dilution

Predicted band size: 39 kDa

Blocking and diluting buffer: 5% NFDM/TBST



All lanes : Anti-Casein Kinase 1 alpha antibody [EPR1961(2)] (ab108296) at 1/1000 dilution (purified)

Lane 1 : Rat brain lysates

Lane 2 : PC-12 (Rat adrenal gland pheochromocytoma) whole cell lysates

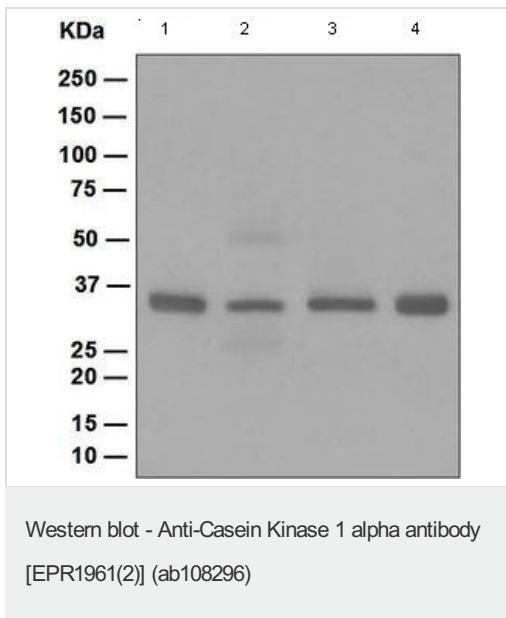
Lysates/proteins at 15 µg per lane.

Secondary

All lanes : Goat Anti-Rabbit IgG H&L (HRP) (ab97051) at 1/20000 dilution

Predicted band size: 39 kDa

Blocking and diluting buffer: 5% NFDM/TBST



All lanes : Anti-Casein Kinase 1 alpha antibody [EPR1961(2)] (ab108296) at 1/1000 dilution (unpurified)

Lane 1 : MCF7 cell lysate

Lane 2 : HeLa cell lysate

Lane 3 : Jurkat cell lysate

Lane 4 : HT-1376 cell lysate

Lysates/proteins at 10 µg per lane.

Predicted band size: 39 kDa

Observed band size: 34 kDa

[why is the actual band size different from the predicted?](#)

Why choose a recombinant antibody?



Research with confidence
Consistent and reproducible results



Long-term and scalable supply
Recombinant technology



Success from the first experiment
Confirmed specificity



Ethical standards compliant
Animal-free production

Anti-Casein Kinase 1 alpha antibody [EPR1961(2)]
(ab108296)

Please note: All products are "FOR RESEARCH USE ONLY. NOT FOR USE IN DIAGNOSTIC PROCEDURES"

Our Abpromise to you: Quality guaranteed and expert technical support

- Replacement or refund for products not performing as stated on the datasheet
- Valid for 12 months from date of delivery
- Response to your inquiry within 24 hours
- We provide support in Chinese, English, French, German, Japanese and Spanish
- Extensive multi-media technical resources to help you
- We investigate all quality concerns to ensure our products perform to the highest standards

If the product does not perform as described on this datasheet, we will offer a refund or replacement. For full details of the Abpromise, please visit <https://www.abcam.com/abpromise> or contact our technical team.

Terms and conditions

- Guarantee only valid for products bought direct from Abcam or one of our authorized distributors