


Product datasheet

Anti-Casein Kinase 2 beta antibody ab151784

5 Images

Overview

Product name	Anti-Casein Kinase 2 beta antibody
Description	Rabbit polyclonal to Casein Kinase 2 beta
Host species	Rabbit
Tested applications	Suitable for: WB, IHC-P
Species reactivity	Reacts with: Mouse, Human Predicted to work with: Rat, Rabbit, Cow, Pig, Xenopus laevis, Xenopus tropicalis 
Immunogen	Recombinant fragment, corresponding to a region within amino acids 1-215 of Human Casein Kinase 2 beta.
General notes	<p>Reproducibility is key to advancing scientific discovery and accelerating scientists' next breakthrough.</p> <p>Abcam is leading the way with our range of recombinant antibodies, knockout-validated antibodies and knockout cell lines, all of which support improved reproducibility.</p> <p>We are also planning to innovate the way in which we present recommended applications and species on our product datasheets, so that only applications & species that have been tested in our own labs, our suppliers or by selected trusted collaborators are covered by our Abpromise™ guarantee.</p> <p>In preparation for this, we have started to update the applications & species that this product is Abpromise guaranteed for.</p> <p>We are also updating the applications & species that this product has been “predicted to work with,” however this information is not covered by our Abpromise guarantee.</p> <p>Applications & species from publications and Abreviews that have not been tested in our own labs or in those of our suppliers are not covered by the Abpromise guarantee.</p> <p>Please check that this product meets your needs before purchasing. If you have any questions, special requirements or concerns, please send us an inquiry and/or contact our Support team ahead of purchase. Recommended alternatives for this product can be found below, as well as customer reviews and Q&As.</p>

Properties

Form	Liquid
-------------	--------

Storage instructions	Shipped at 4°C. Upon delivery aliquot. Store at -20°C or -80°C. Avoid freeze / thaw cycle.
Storage buffer	pH: 7.00 Preservative: 0.01% Thimerosal (merthiolate) Constituents: 78.99% PBS, 1% BSA, 20% Glycerol (glycerin, glycerine)
Purity	Immunogen affinity purified
Clonality	Polyclonal
Isotype	IgG

Applications

Our [Abpromise guarantee](#) covers the use of **ab151784** in the following tested applications.

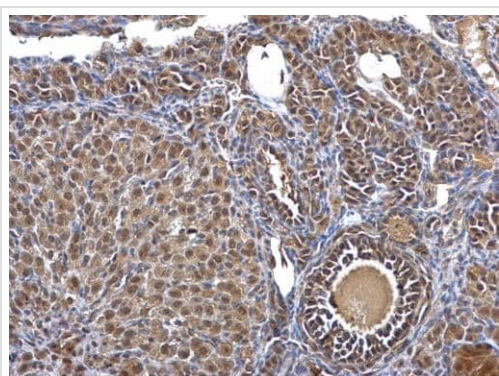
The application notes include recommended starting dilutions; optimal dilutions/concentrations should be determined by the end user.

Application	Abreviews	Notes
WB		1/500 - 1/5000. Predicted molecular weight: 24 kDa.
IHC-P		1/100 - 1/1000. Perform heat mediated antigen retrieval with citrate buffer pH 6 before commencing with IHC staining protocol. Antigen retrieval using heat mediated Tris/EDTA buffer (pH 8.0) is also possible.

Target

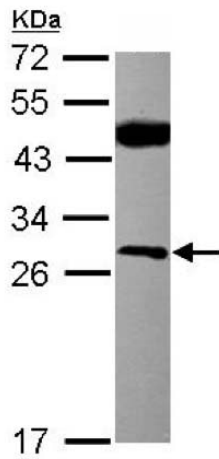
Function	Participates in Wnt signaling (By similarity). Plays a complex role in regulating the basal catalytic activity of the alpha subunit.
Sequence similarities	Belongs to the casein kinase 2 subunit beta family.
Post-translational modifications	Phosphorylated by alpha subunit.

Images



Paraffin-embedded mouse ovary tissue stained for Casein Kinase 2 using ab151784 at 1/500 dilution in immunohistochemical analysis.

Immunohistochemistry (Formalin/PFA-fixed paraffin-embedded sections) - Anti-Casein Kinase 2 beta antibody (ab151784)

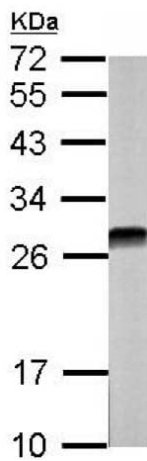


Western blot - Anti-Casein Kinase 2 beta antibody (ab151784)

Anti-Casein Kinase 2 beta antibody (ab151784) at 1/500 dilution +
MCF7 whole cell
lysate at 30 μ g

Predicted band size: 24 kDa

12% SDS PAGE

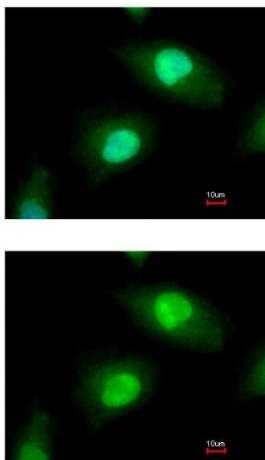


Western blot - Anti-Casein Kinase 2 beta antibody (ab151784)

Anti-Casein Kinase 2 beta antibody (ab151784) at 1/5000 dilution +
NIH3T3 whole cell
lysate at 30 μ g

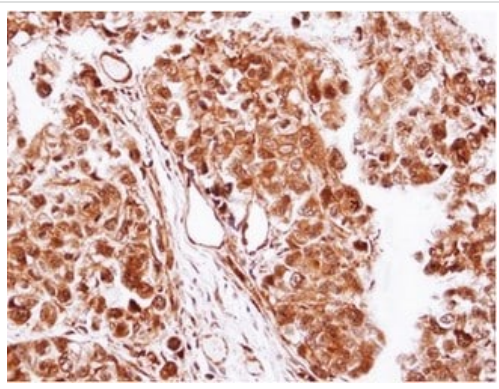
Predicted band size: 24 kDa

12% SDS PAGE



Immunohistochemistry (Formalin/PFA-fixed paraffin-embedded sections) - Anti-Casein Kinase 2 beta antibody (ab151784)

Immunofluorescent analysis of paraformaldehyde-fixed HeLa cells labeling Casein Kinase 2 beta with ab151784 at 1/500. Co-stained with Hoechst 33342.



Immunohistochemical analysis of paraffin embedded CL1-0 xenograft, labeling Casein Kinase 2 beta with ab151784 antibody at 1/100.

Immunohistochemistry (Formalin/PFA-fixed paraffin-embedded sections) - Anti-Casein Kinase 2 beta antibody (ab151784)

Please note: All products are "FOR RESEARCH USE ONLY. NOT FOR USE IN DIAGNOSTIC PROCEDURES"

Our Abpromise to you: Quality guaranteed and expert technical support

- Replacement or refund for products not performing as stated on the datasheet
- Valid for 12 months from date of delivery
- Response to your inquiry within 24 hours
- We provide support in Chinese, English, French, German, Japanese and Spanish
- Extensive multi-media technical resources to help you
- We investigate all quality concerns to ensure our products perform to the highest standards

If the product does not perform as described on this datasheet, we will offer a refund or replacement. For full details of the Abpromise, please visit <https://www.abcam.com/abpromise> or contact our technical team.

Terms and conditions

- Guarantee only valid for products bought direct from Abcam or one of our authorized distributors