

Product datasheet

Anti-Caspase-2 antibody ab227241

3 Images

Overview

Product name	Anti-Caspase-2 antibody
Description	Rabbit polyclonal to Caspase-2
Host species	Rabbit
Tested applications	Suitable for: WB
Species reactivity	Reacts with: Human
Immunogen	Recombinant fragment within Human Caspase-2 (internal sequence). The exact sequence is proprietary. Database link: P42575
Positive control	WB: HeLa cell extract; Jurkat, Raji and NCI-H929 whole cell extracts.
General notes	<p>Reproducibility is key to advancing scientific discovery and accelerating scientists' next breakthrough.</p> <p>Abcam is leading the way with our range of recombinant antibodies, knockout-validated antibodies and knockout cell lines, all of which support improved reproducibility.</p> <p>We are also planning to innovate the way in which we present recommended applications and species on our product datasheets, so that only applications & species that have been tested in our own labs, our suppliers or by selected trusted collaborators are covered by our Abpromise™ guarantee.</p> <p>In preparation for this, we have started to update the applications & species that this product is Abpromise guaranteed for.</p> <p>We are also updating the applications & species that this product has been "predicted to work with," however this information is not covered by our Abpromise guarantee.</p> <p>Applications & species from publications and Abreviews that have not been tested in our own labs or in those of our suppliers are not covered by the Abpromise guarantee.</p> <p>Please check that this product meets your needs before purchasing. If you have any questions, special requirements or concerns, please send us an inquiry and/or contact our Support team ahead of purchase. Recommended alternatives for this product can be found below, as well as customer reviews and Q&As.</p>

Properties

Form	Liquid
-------------	--------

Storage instructions	Shipped at 4°C. Store at +4°C short term (1-2 weeks). Upon delivery aliquot. Store at -20°C long term. Avoid freeze / thaw cycle.
Storage buffer	pH: 7.00 Preservative: 0.01% Thimerosal (merthiolate) Constituents: 78.99% PBS, 1% BSA, 20% Glycerol (glycerin, glycerine)
Purity	Immunogen affinity purified
Clonality	Polyclonal
Isotype	IgG

Applications

Our [Abpromise guarantee](#) covers the use of **ab227241** in the following tested applications.

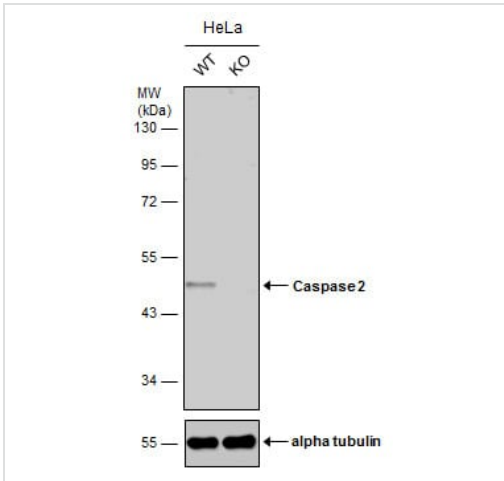
The application notes include recommended starting dilutions; optimal dilutions/concentrations should be determined by the end user.

Application	Abreviews	Notes
WB		1/500 - 1/10000. Predicted molecular weight: 51 kDa.

Target

Function	Involved in the activation cascade of caspases responsible for apoptosis execution. Might function by either activating some proteins required for cell death or inactivating proteins necessary for cell survival.
Tissue specificity	Expressed at higher levels in the embryonic lung, liver and kidney than in the heart and brain. In adults, higher level expression is seen in the placenta, lung, kidney, and pancreas than in the heart, brain, liver and skeletal muscle.
Sequence similarities	Belongs to the peptidase C14A family. Contains 1 CARD domain.
Post-translational modifications	The mature protease can process its own propeptide, but not that of other caspases.

Images



Western blot - Anti-Caspase-2 antibody (ab227241)

All lanes : Anti-Caspase-2 antibody (ab227241) at 1/2500 dilution

Lane 1 : WT HeLa cell extract

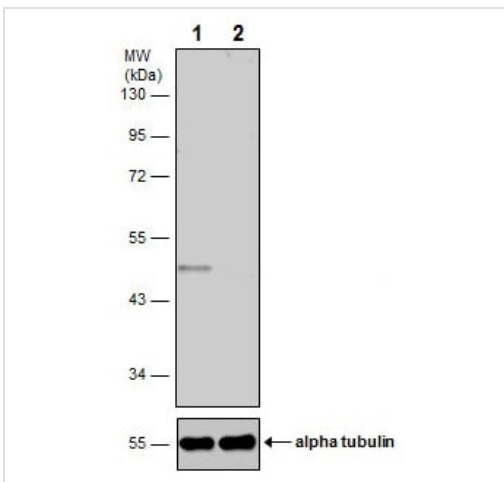
Lane 2 : Caspase-2 Knockout HeLa cell extracts

Lysates/proteins at 30 µg per lane.

Secondary

All lanes : HRP-conjugated anti-rabbit IgG

Predicted band size: 51 kDa



Western blot - Anti-Caspase-2 antibody (ab227241)

All lanes : Anti-Caspase-2 antibody (ab227241) at 1/2500 dilution

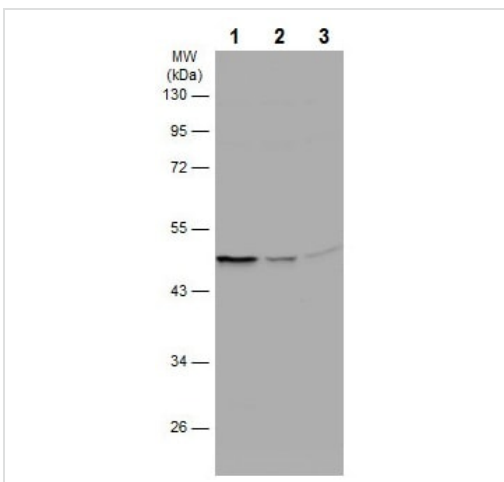
Lane 1 : Wild-type HeLa (human epithelial cell line from cervix adenocarcinoma) cell extract

Lane 2 : Caspase-2 knockout HeLa (human epithelial cell line from cervix adenocarcinoma) cell extract

Lysates/proteins at 30 µg per lane.

Predicted band size: 51 kDa

10% SDS-PAGE gel.



Western blot - Anti-Caspase-2 antibody (ab227241)

All lanes : Anti-Caspase-2 antibody (ab227241) at 1/5000 dilution

Lane 1 : Jurkat (human T cell leukemia cell line from peripheral blood) whole cell extract

Lane 2 : Raji (human Burkitt's lymphoma cell line) whole cell extract

Lane 3 : NCI-H929 (human bone marrow lymphoblast cell line) whole cell extract

Lysates/proteins at 30 µg per lane.

Secondary

All lanes : HRP-conjugated anti-rabbit IgG

Predicted band size: 51 kDa

10% SDS-PAGE gel.

Please note: All products are "FOR RESEARCH USE ONLY. NOT FOR USE IN DIAGNOSTIC PROCEDURES"

Our Abpromise to you: Quality guaranteed and expert technical support

- Replacement or refund for products not performing as stated on the datasheet
- Valid for 12 months from date of delivery
- Response to your inquiry within 24 hours

- We provide support in Chinese, English, French, German, Japanese and Spanish
- Extensive multi-media technical resources to help you
- We investigate all quality concerns to ensure our products perform to the highest standards

If the product does not perform as described on this datasheet, we will offer a refund or replacement. For full details of the Abpromise, please visit <https://www.abcam.com/abpromise> or contact our technical team.

Terms and conditions

- Guarantee only valid for products bought direct from Abcam or one of our authorized distributors