




Product datasheet

Anti-Caspase-6/CASP-6 antibody ab231349

1 References 3 Images

Overview

| | |
|----------------------------|--|
| Product name | Anti-Caspase-6/CASP-6 antibody |
| Description | Rabbit polyclonal to Caspase-6/CASP-6 |
| Host species | Rabbit |
| Tested applications | Suitable for: IHC-P, WB |
| Species reactivity | Reacts with: Cow Predicted to work with: Mouse, Rat, Human  |
| Immunogen | Recombinant full length protein (His-tag) corresponding to Cow Caspase-6/CASP-6 aa 194-293. Expressed in E.coli. N-terminal tag. Full length Caspase-6/CASP-6 subunit p11. Sequence: MGHHHHHSGSEF- AASVYTLPAGADFLMCYSVAEGYSHRETVNGSWYQDLC EMLGKFGSSL EFTELLTLVNRKVSQRRVDFCRDPNAIGKKQVPCFASMLT KKLHFSPKSK Database link: Q3T0P5  Run BLAST with  Run BLAST with |
| Positive control | IHC-P: Bovine bowel tissue. WB: Recombinant bovine Caspase-6/CASP-6 protein. Cow pancreas lysate. |
| General notes | Previously labelled as Caspase-6. Reproducibility is key to advancing scientific discovery and accelerating scientists' next breakthrough. Abcam is leading the way with our range of recombinant antibodies, knockout-validated antibodies and knockout cell lines, all of which support improved reproducibility. We are also planning to innovate the way in which we present recommended applications and species on our product datasheets, so that only applications & species that have been tested in our own labs, our suppliers or by selected trusted collaborators are covered by our Abpromise™ guarantee. In preparation for this, we have started to update the applications & species that this product is Abpromise guaranteed for. We are also updating the applications & species that this product has been “predicted to work with,” however this information is not covered by our Abpromise guarantee. |

Applications & species from publications and Abreviews that have not been tested in our own labs or in those of our suppliers are not covered by the Abpromise guarantee.

Please check that this product meets your needs before purchasing. If you have any questions, special requirements or concerns, please send us an inquiry and/or contact our Support team ahead of purchase. Recommended alternatives for this product can be found below, as well as customer reviews and Q&As.

Properties

| | |
|-----------------------------|---|
| Form | Liquid |
| Storage instructions | Shipped at 4°C. Store at +4°C short term (1-2 weeks). Upon delivery aliquot. Store at -20°C long term. Avoid freeze / thaw cycle. |
| Storage buffer | pH: 7.40 Preservative: 0.02% Sodium azide Constituents: PBS, 50% Glycerol |
| Purity | Protein A purified |
| Purification notes | Antigen-specific affinity chromatography followed by Protein A affinity chromatography. |
| Clonality | Polyclonal |
| Isotype | IgG |

Applications

Our [Abpromise guarantee](#) covers the use of **ab231349** in the following tested applications.

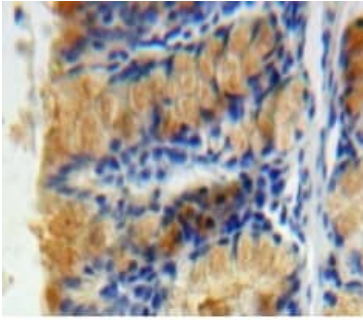
The application notes include recommended starting dilutions; optimal dilutions/concentrations should be determined by the end user.

| Application | Abreviews | Notes |
|-------------|-----------|---------------------------------------|
| IHC-P | | Use a concentration of 5 - 20 µg/ml. |
| WB | | Use a concentration of 0.2 - 2 µg/ml. |

Target

| | |
|---|---|
| Function | Involved in the activation cascade of caspases responsible for apoptosis execution. Cleaves poly(ADP-ribose) polymerase in vitro, as well as lamins. Overexpression promotes programmed cell death. |
| Sequence similarities | Belongs to the peptidase C14A family. |
| Post-translational modifications | Cleavages by caspase-3, caspase-8 or -10 generate the two active subunits. |
| Cellular localization | Cytoplasm. |

Images



Immunohistochemistry (Formalin/PFA-fixed paraffin-embedded sections) - Anti-Caspase-6/CASP-6 antibody (ab231349)

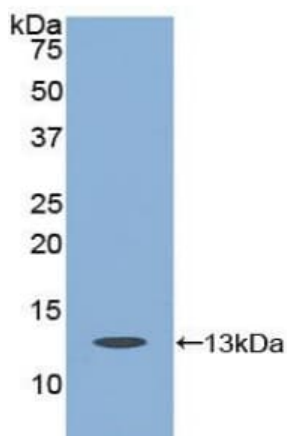
Formalin-fixed, paraffin-embedded bovine bowel tissue stained for Caspase-6/CASP-6 using ab231349 at 20 µg/mL in immunohistochemical analysis.



Western blot - Anti-Caspase-6/CASP-6 antibody (ab231349)

Anti-Caspase-6/CASP-6 antibody (ab231349) at 2 µg/ml + Cow pancreas tissue lysate

Developed using the ECL technique.



Western blot - Anti-Caspase-6/CASP-6 antibody (ab231349)

Anti-Caspase-6/CASP-6 antibody (ab231349) at 2 µg/ml + Recombinant bovine Caspase-6/CASP-6 protein

Developed using the ECL technique.

Please note: All products are "FOR RESEARCH USE ONLY. NOT FOR USE IN DIAGNOSTIC PROCEDURES"

Our Abpromise to you: Quality guaranteed and expert technical support

- Replacement or refund for products not performing as stated on the datasheet
- Valid for 12 months from date of delivery
- Response to your inquiry within 24 hours

- We provide support in Chinese, English, French, German, Japanese and Spanish
- Extensive multi-media technical resources to help you
- We investigate all quality concerns to ensure our products perform to the highest standards

If the product does not perform as described on this datasheet, we will offer a refund or replacement. For full details of the Abpromise, please visit <https://www.abcam.com/abpromise> or contact our technical team.

Terms and conditions

- Guarantee only valid for products bought direct from Abcam or one of our authorized distributors