




## Product datasheet

# Anti-Cathepsin B antibody ab214197

[2 Images](#)

### Overview

---

<b>Product name</b>	Anti-Cathepsin B antibody
<b>Description</b>	Rabbit polyclonal to Cathepsin B
<b>Host species</b>	Rabbit
<b>Tested applications</b>	<b>Suitable for:</b> IHC-P
<b>Species reactivity</b>	<b>Reacts with:</b> Rat, Human <b>Predicted to work with:</b> Mouse 
<b>Immunogen</b>	Synthetic peptide within Mouse Cathepsin B aa 300-333 conjugated to keyhole limpet haemocyanin. The exact sequence is proprietary. Sequence: WNLDWGDNGFFKILRGENHCGIESEVAGIPRTD  Database link: <a href="#">P10605</a>   <a href="#">Run BLAST with</a>  <a href="#">Run BLAST with</a>
<b>Positive control</b>	Human esophageal carcinoma and rat brain tissues.

### Properties

---

<b>Form</b>	Liquid
<b>Storage instructions</b>	Shipped at 4°C. Store at +4°C short term (1-2 weeks). Upon delivery aliquot. Store at -20°C long term. Avoid freeze / thaw cycle.
<b>Storage buffer</b>	Preservative: 0.09% Sodium azide Constituents: 1% BSA, 50% Glycerol
<b>Purity</b>	Protein A purified
<b>Clonality</b>	Polyclonal
<b>Isotype</b>	IgG

### Applications

---

Our [Abpromise guarantee](#) covers the use of **ab214197** in the following tested applications.

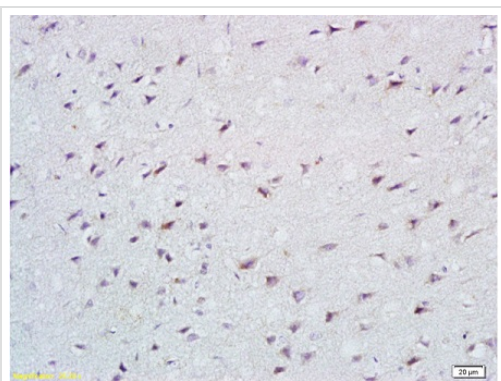
The application notes include recommended starting dilutions; optimal dilutions/concentrations should be determined by the end user.

Application	Abreviews	Notes
IHC-P		1/100 - 1/500. Perform heat mediated antigen retrieval with citrate buffer pH 6 before commencing with IHC staining protocol.

## Target

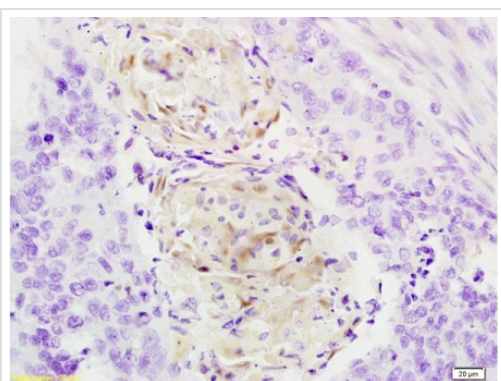
<b>Function</b>	Thiol protease which is believed to participate in intracellular degradation and turnover of proteins. Has also been implicated in tumor invasion and metastasis.
<b>Sequence similarities</b>	Belongs to the peptidase C1 family.
<b>Cellular localization</b>	Lysosome. Melanosome. Identified by mass spectrometry in melanosome fractions from stage I to stage IV.

## Images



Immunohistochemical analysis of formalin-fixed and paraffin-embedded rat brain tissue labeling Cathepsin B with ab214197 at 1/200 dilution, followed by conjugation to the secondary antibody and DAB staining.

Immunohistochemistry (Formalin/PFA-fixed paraffin-embedded sections) - Anti-Cathepsin B antibody (ab214197)



Immunohistochemical analysis of formalin-fixed and paraffin-embedded Human esophageal carcinoma tissue labeling Cathepsin B with ab214197 at 1/200 dilution, followed by conjugation to the secondary antibody and DAB staining.

Immunohistochemistry (Formalin/PFA-fixed paraffin-embedded sections) - Anti-Cathepsin B antibody (ab214197)

**Please note:** All products are "FOR RESEARCH USE ONLY. NOT FOR USE IN DIAGNOSTIC PROCEDURES"

### **Our Abpromise to you: Quality guaranteed and expert technical support**

---

- Replacement or refund for products not performing as stated on the datasheet
- Valid for 12 months from date of delivery
- Response to your inquiry within 24 hours
  
- We provide support in Chinese, English, French, German, Japanese and Spanish
- Extensive multi-media technical resources to help you
- We investigate all quality concerns to ensure our products perform to the highest standards

If the product does not perform as described on this datasheet, we will offer a refund or replacement. For full details of the Abpromise, please visit <https://www.abcam.com/abpromise> or contact our technical team.

### **Terms and conditions**

---

- Guarantee only valid for products bought direct from Abcam or one of our authorized distributors