




Product datasheet

Anti-Cathepsin S antibody ab232830

7 Images

Overview

<b>Product name</b>	Anti-Cathepsin S antibody
<b>Description</b>	Rabbit polyclonal to Cathepsin S
<b>Host species</b>	Rabbit
<b>Tested applications</b>	<b>Suitable for:</b> WB, IHC-P
<b>Species reactivity</b>	<b>Reacts with:</b> Human <b>Predicted to work with:</b> Dog 
<b>Immunogen</b>	Recombinant full length protein corresponding to Human Cathepsin S aa 115-331. (Expressed in E.coli). Sequence:  LPDSVDWREKGCVTEVKYQGSCGACWAFSAVGALE AQLKLTGKLVLSLA QNLVDCSTEKYGNKGCNGGFMTTAFQYIIDNKGIDSDA SYPYKAMDQKCC YDSKYRAATCSKYTELPYGREDVLKEAVANKGPVSVG VDARHPSFFLYRS GVYYEPSCQNVNHGVLVVGYGDLNGKEYWLVKNSW GHNFGEEGYRMAR NKGNHCGIASFPSYPEI  Database link: <a href="#">P25774</a>   <a href="#">Run BLAST with</a>  <a href="#">Run BLAST with</a>
<b>Positive control</b>	IHC-P: Human colorectal cancer, stomach cancer, stomach, kidney and glioma tissues. WB: Human lung and thymus lysates; PANC-1 cell lysate; Recombinant human Cathepsin S protein.

Properties

<b>Form</b>	Liquid
<b>Storage instructions</b>	Shipped at 4°C. Store at +4°C short term (1-2 weeks). Upon delivery aliquot. Store at -20°C long term. Avoid freeze / thaw cycle.
<b>Storage buffer</b>	pH: 7.40 Preservative: 0.02% Sodium azide Constituents: PBS, 50% Glycerol
<b>Purity</b>	Immunogen affinity purified

<b>Purification notes</b>	ab232830 was purified by antigen-specific affinity chromatography followed by Protein A affinity chromatography.
<b>Clonality</b>	Polyclonal
<b>Isotype</b>	IgG

## Applications

Our [Abpromise guarantee](#) covers the use of **ab232830** in the following tested applications.

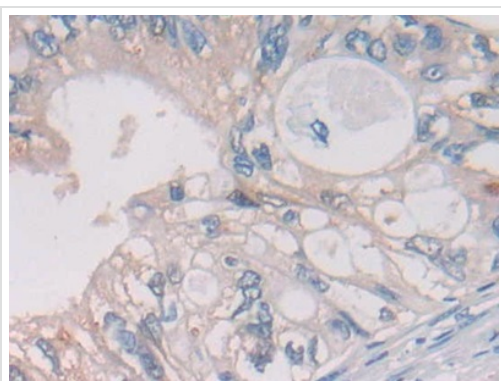
The application notes include recommended starting dilutions; optimal dilutions/concentrations should be determined by the end user.

Application	Abreviews	Notes
WB		Use a concentration of 1 - 5 µg/ml. Predicted molecular weight: 37 kDa.
IHC-P		Use a concentration of 5 - 20 µg/ml.

## Target

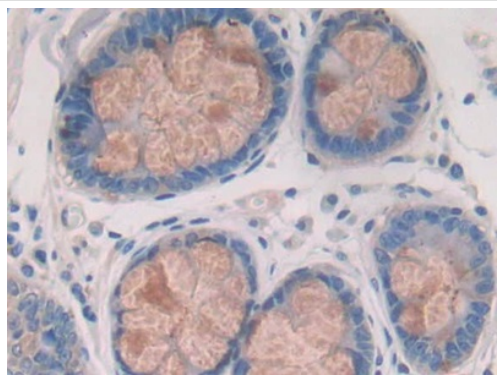
<b>Function</b>	Thiol protease. Key protease responsible for the removal of the invariant chain from MHC class II molecules. The bond-specificity of this proteinase is in part similar to the specificities of cathepsin L and cathepsin N.
<b>Sequence similarities</b>	Belongs to the peptidase C1 family.
<b>Cellular localization</b>	Lysosome.

## Images



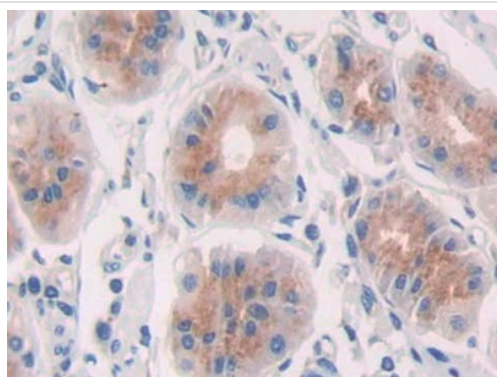
Paraffin-embedded human colorectal cancer tissue stained for Cathepsin S using ab232830 at 20 µg/ml in immunohistochemical analysis. DAB staining.

Immunohistochemistry (Formalin/PFA-fixed paraffin-embedded sections) - Anti-Cathepsin S antibody (ab232830)



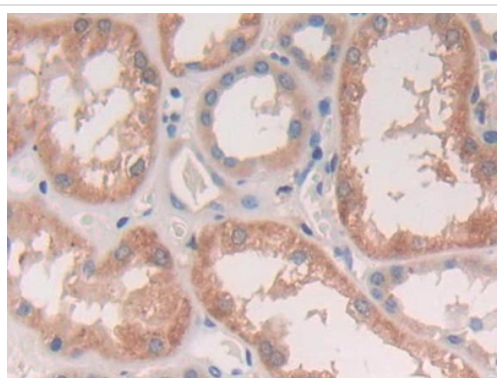
Immunohistochemistry (Formalin/PFA-fixed paraffin-embedded sections) - Anti-Cathepsin S antibody (ab232830)

Paraffin-embedded human stomach cancer tissue stained for Cathepsin S using ab232830 at 20  $\mu\text{g/ml}$  in immunohistochemical analysis. DAB staining.



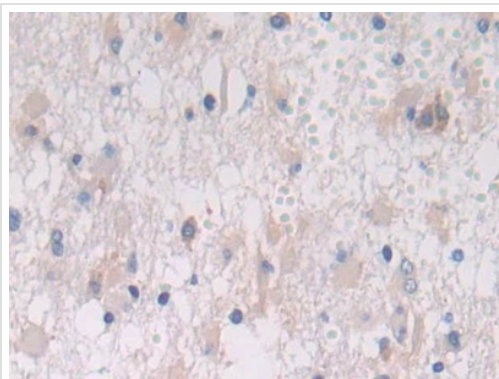
Immunohistochemistry (Formalin/PFA-fixed paraffin-embedded sections) - Anti-Cathepsin S antibody (ab232830)

Paraffin-embedded human stomach tissue stained for Cathepsin S using ab232830 at 20  $\mu\text{g/ml}$  in immunohistochemical analysis. DAB staining.



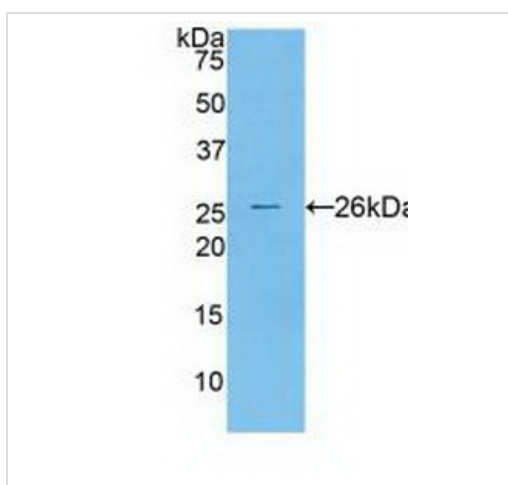
Immunohistochemistry (Formalin/PFA-fixed paraffin-embedded sections) - Anti-Cathepsin S antibody (ab232830)

Paraffin-embedded human kidney tissue stained for Cathepsin S using ab232830 at 20  $\mu\text{g/ml}$  in immunohistochemical analysis. DAB staining.



Immunohistochemistry (Formalin/PFA-fixed paraffin-embedded sections) - Anti-Cathepsin S antibody (ab232830)

Paraffin-embedded human glioma tissue stained for Cathepsin S using ab232830 at 20 µg/ml in immunohistochemical analysis. DAB staining.



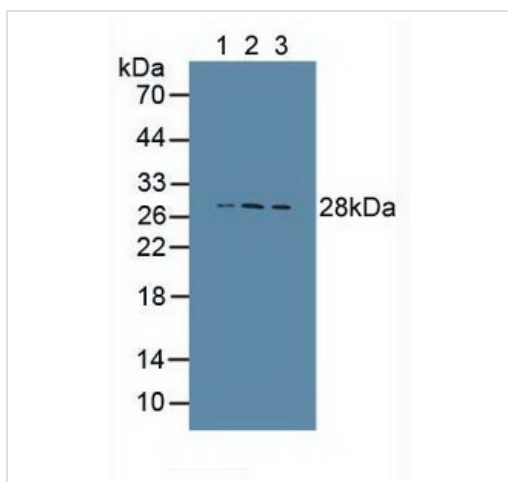
Western blot - Anti-Cathepsin S antibody (ab232830)

Anti-Cathepsin S antibody (ab232830) at 2 µg/ml + Recombinant human Cathepsin S protein

**Secondary**

HRP-Linked Guinea pig Anti-Rabbit at 1/2000 dilution

**Predicted band size:** 37 kDa



Western blot - Anti-Cathepsin S antibody (ab232830)

**All lanes :** Anti-Cathepsin S antibody (ab232830) at 2 µg/ml

**Lane 1 :** Human lung lysate

**Lane 2 :** PANC-1 (human pancreatic epithelial carcinoma cell line) cell lysate

**Lane 3 :** Human thymus lysate

**Secondary**

**All lanes :** HRP-Linked Guinea pig Anti-Rabbit at 1/2000 dilution

**Predicted band size:** 37 kDa

**Please note:** All products are "FOR RESEARCH USE ONLY. NOT FOR USE IN DIAGNOSTIC PROCEDURES"

### **Our Abpromise to you: Quality guaranteed and expert technical support**

---

- Replacement or refund for products not performing as stated on the datasheet
- Valid for 12 months from date of delivery
- Response to your inquiry within 24 hours
  
- We provide support in Chinese, English, French, German, Japanese and Spanish
- Extensive multi-media technical resources to help you
- We investigate all quality concerns to ensure our products perform to the highest standards

If the product does not perform as described on this datasheet, we will offer a refund or replacement. For full details of the Abpromise, please visit <https://www.abcam.com/abpromise> or contact our technical team.

### **Terms and conditions**

---

- Guarantee only valid for products bought direct from Abcam or one of our authorized distributors