



Product datasheet

Anti-CBFb antibody ab231941

4 Images

Overview

Product name	Anti-CBFb antibody
Description	Rabbit polyclonal to CBFb
Host species	Rabbit
Tested applications	Suitable for: IHC-P, WB
Species reactivity	Reacts with: Human
Immunogen	<p>Recombinant full length protein (His-T7-tag) corresponding to Human CBFb aa 1-182. N-terminal tags. Expressed in E.coli.</p> <p>Sequence:</p> <p>MPRVVPDQRSKFENEFFRKLSRECEIKYTGFRDRPH EERQARFQACRD GRSEIAFVATGTNLSLQFFPASWQGEQRQTPSREYVD LEREAGKVYLKAP MILNGVCVIWKGWIDLQRLDGMGCLEFDEERAQQEDA LAQQAFFEEARRRT REFEDRDRSHREEMEVRSQLLAVTGKKTTRP</p> <p>Database link: Q13951</p> <p style="text-align: right;">  Run BLAST with  Run BLAST with </p>
Positive control	WB: Recombinant human CBFb protein; K562 and Jurkat cell lysates. IHC-P: Human kidney and stomach tissues.

Properties

Form	Liquid
Storage instructions	Shipped at 4°C. Store at +4°C short term (1-2 weeks). Upon delivery aliquot. Store at -20°C long term. Avoid freeze / thaw cycle.
Storage buffer	<p>pH: 7.4</p> <p>Preservative: 0.02% Sodium azide</p> <p>Constituents: PBS, 50% Glycerol</p>
Purity	Protein A purified
Purification notes	Antigen-specific affinity chromatography followed by Protein A affinity chromatography.
Clonality	Polyclonal

Isotype

IgG

Applications

Our [Abpromise guarantee](#) covers the use of **ab231941** in the following tested applications.

The application notes include recommended starting dilutions; optimal dilutions/concentrations should be determined by the end user.

Application	Abreviews	Notes
IHC-P		Use a concentration of 5 - 20 µg/ml.
WB		Use a concentration of 0.5 - 2 µg/ml.

Target

Function

CBF binds to the core site, 5'-PYGPYGGT-3', of a number of enhancers and promoters, including murine leukemia virus, polyomavirus enhancer, T-cell receptor enhancers, LCK, IL3 and GM-CSF promoters. CBFβ enhances DNA binding by RUNX1.

Involvement in disease

Note=A chromosomal aberration involving CBFβ is associated with acute myeloid leukemia of M4EO subtype. Pericentric inversion inv(16)(p13;q22). The inversion produces a fusion protein that consists of the 165 N-terminal residues of CBF-beta (PEPB2) with the tail region of MYH11.

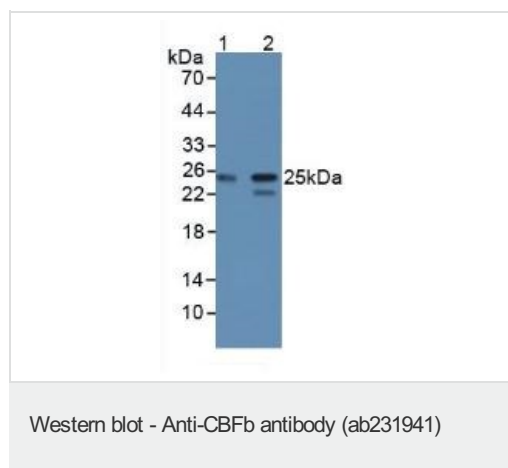
Sequence similarities

Belongs to the CBF-beta family.

Cellular localization

Nucleus.

Images



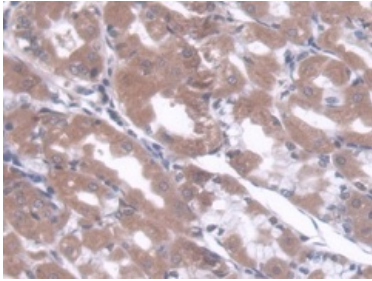
All lanes : Anti-CREM antibody ([ab231741](#)) at 1 µg/ml

Lane 1 : K562 (Human chronic myelogenous leukemia cell line from bone marrow) cell lysate

Lane 2 : Jurkat (Human T cell leukemia cell line from peripheral blood) cell lysate

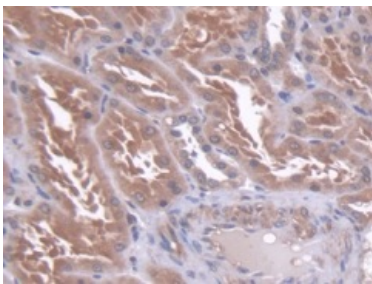
Secondary

All lanes : HRP-Linked Guinea pig anti-Rabbit at 1/2000 dilution



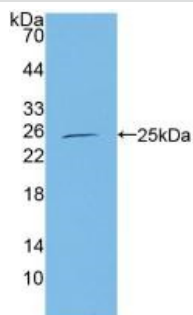
Immunohistochemistry (Formalin/PFA-fixed paraffin-embedded sections) - Anti-CBFb antibody (ab231941)

Formalin-fixed, paraffin embedded human stomach tissue stained for CBFb using ab231941 at 20 µg/ml in immunohistochemical analysis. DAB staining.



Immunohistochemistry (Formalin/PFA-fixed paraffin-embedded sections) - Anti-CBFb antibody (ab231941)

Formalin-fixed, paraffin embedded human kidney tissue stained for CBFb using ab231941 at 20 µg/ml in immunohistochemical analysis. DAB staining.



Western blot - Anti-CBFb antibody (ab231941)

Anti-CBFb antibody (ab231941) at 1 µg/ml + Recombinant human CBFb protein

Please note: All products are "FOR RESEARCH USE ONLY. NOT FOR USE IN DIAGNOSTIC PROCEDURES"

Our Abpromise to you: Quality guaranteed and expert technical support

- Replacement or refund for products not performing as stated on the datasheet
- Valid for 12 months from date of delivery
- Response to your inquiry within 24 hours

- We provide support in Chinese, English, French, German, Japanese and Spanish
- Extensive multi-media technical resources to help you
- We investigate all quality concerns to ensure our products perform to the highest standards

If the product does not perform as described on this datasheet, we will offer a refund or replacement. For full details of the Abpromise, please visit <https://www.abcam.com/abpromise> or contact our technical team.

Terms and conditions

- Guarantee only valid for products bought direct from Abcam or one of our authorized distributors