


Product datasheet

Anti-CBLN1 antibody [EPR13655] ab181219

Recombinant **RabMAb**

[2 Images](#)

Overview

Product name	Anti-CBLN1 antibody [EPR13655]
Description	Rabbit monoclonal [EPR13655] to CBLN1
Host species	Rabbit
Tested applications	Suitable for: IHC-P
Species reactivity	Reacts with: Human Predicted to work with: Mouse, Rat 
Immunogen	Synthetic peptide (the amino acid sequence is considered to be commercially sensitive) within Human CBLN1 aa 150 to the C-terminus. The exact sequence is proprietary. Database link: P23435
Positive control	Human cerebellum tissue.
General notes	

This product is a recombinant monoclonal antibody, which offers several advantages including:

- High batch-to-batch consistency and reproducibility
- Improved sensitivity and specificity
- Long-term security of supply
- Animal-free production

For more information [see here](#).

Our RabMAb[®] technology is a patented hybridoma-based technology for making rabbit monoclonal antibodies. For details on our patents, please refer to [RabMAb[®] patents](#).

Reproducibility is key to advancing scientific discovery and accelerating scientists' next breakthrough.

Abcam is leading the way with our range of recombinant antibodies, knockout-validated antibodies and knockout cell lines, all of which support improved reproducibility.

We are also planning to innovate the way in which we present recommended applications and species on our product datasheets, so that only applications & species that have been tested in our own labs, our suppliers or by selected trusted collaborators are covered by our Abpromise[™] guarantee.

In preparation for this, we have started to update the applications & species that this product is Abpromise guaranteed for.

We are also updating the applications & species that this product has been “predicted to work with,” however this information is not covered by our Abpromise guarantee.

Applications & species from publications and Abreviews that have not been tested in our own labs or in those of our suppliers are not covered by the Abpromise guarantee.

Please check that this product meets your needs before purchasing. If you have any questions, special requirements or concerns, please send us an inquiry and/or contact our Support team ahead of purchase. Recommended alternatives for this product can be found below, as well as customer reviews and Q&As.

Properties

Form	Liquid
Storage instructions	Shipped at 4°C. Store at +4°C short term (1-2 weeks). Upon delivery aliquot. Store at -20°C long term. Avoid freeze / thaw cycle.
Storage buffer	Preservative: 0.01% Sodium azide Constituents: 59% PBS, 40% Glycerol (glycerin, glycerine), 0.05% BSA
Purity	Tissue culture supernatant
Clonality	Monoclonal
Clone number	EPR13655
Isotype	IgG

Applications

Our [Abpromise guarantee](#) covers the use of **ab181219** in the following tested applications.

The application notes include recommended starting dilutions; optimal dilutions/concentrations should be determined by the end user.

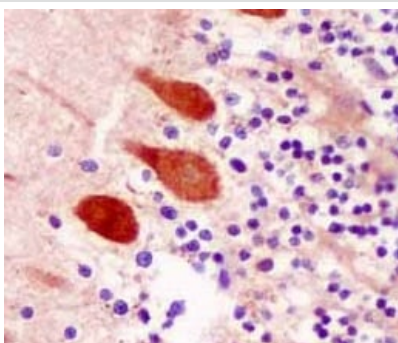
Application	Abreviews	Notes
IHC-P		1/50 - 1/100. Perform heat mediated antigen retrieval with citrate buffer pH 6 before commencing with IHC staining protocol.

Target

Function	<p>Required for synapse integrity and synaptic plasticity. During cerebellar synapse formation, essential for the formation and maintenance of parallel fiber and Purkinje cell synapses. When parallel fibers make contact with Purkinje spines, CBLN1 interaction with GRID2 triggers the recruitment of NRXN1 and secretory vesicles to the sites of contact. NRXN1-CBLN1-GRID2 signaling induces presynaptic morphological changes, which may further accumulate pre- and postsynaptic components to promote bidirectional maturation of parallel fiber - Purkinje cell functionally active synapses by a positive feedback mechanism. Required for CBLN3 export from the endoplasmic reticulum and secretion.</p> <p>The cerebellin peptide exerts neuromodulatory functions. Directly stimulates norepinephrine release via the adenylyate cyclase/PKA-dependent signaling pathway; and indirectly enhances adrenocortical secretion in vivo, through a paracrine mechanism involving medullary catecholamine release.</p>
-----------------	--

Tissue specificity	In the Purkinje cells postsynaptic structures. In the cerebellum, cerebellin is much less abundant than [des-Ser1]-cerebellin.
Sequence similarities	Contains 1 C1q domain.
Developmental stage	Low at birth, the cerebellin concentration increases between day 5 and 15, and reaches peak values between day 21 and 56.
Post-translational modifications	The proteolytic processing to yield cerebellin seems to occur either prior to the secretion by presynaptic neurons and subsequent oligomerization or in some other location after release of the mature protein.
Cellular localization	Secreted. Cell junction > synapse > postsynaptic cell membrane.

Images



Immunohistochemical analysis of paraffin embedded Human cerebellum tissue sections labeling CBLN1 using ab181219 at a 1/100 dilution. A ready to use HRP Polymer for Rabbit IgG was used as the secondary. Hematoxylin counterstain.

Perform heat mediated antigen retrieval with citrate buffer pH 6 before commencing with IHC staining protocol.

Immunohistochemistry (Formalin/PFA-fixed paraffin-embedded sections) - Anti-CBLN1 antibody [EPR13655] (ab181219)

Why choose a recombinant antibody?



Research with confidence
Consistent and reproducible results



Long-term and scalable supply
Recombinant technology



Success from the first experiment
Confirmed specificity



Ethical standards compliant
Animal-free production

Anti-CBLN1 antibody [EPR13655] (ab181219)

Please note: All products are "FOR RESEARCH USE ONLY. NOT FOR USE IN DIAGNOSTIC PROCEDURES"

Our Abpromise to you: Quality guaranteed and expert technical support

- Replacement or refund for products not performing as stated on the datasheet
- Valid for 12 months from date of delivery
- Response to your inquiry within 24 hours

- We provide support in Chinese, English, French, German, Japanese and Spanish
- Extensive multi-media technical resources to help you
- We investigate all quality concerns to ensure our products perform to the highest standards

If the product does not perform as described on this datasheet, we will offer a refund or replacement. For full details of the Abpromise, please visit <https://www.abcam.com/abpromise> or contact our technical team.

Terms and conditions

- Guarantee only valid for products bought direct from Abcam or one of our authorized distributors