

## Product datasheet

# Anti-cbx7 antibody ab31765

[2 References](#)   [2 Images](#)

### Overview

<b>Product name</b>	Anti-cbx7 antibody
<b>Description</b>	Rabbit polyclonal to cbx7
<b>Host species</b>	Rabbit
<b>Tested applications</b>	<b>Suitable for:</b> WB
<b>Species reactivity</b>	<b>Reacts with:</b> Mouse, Human <b>Predicted to work with:</b> Rat, Cow, Chimpanzee
<b>Immunogen</b>	Synthetic peptide within Human cbx7 aa 150-250. The exact sequence is proprietary. Database link: <a href="#">O95931</a> (Peptide available as <a href="#">ab22423</a> )
<b>Positive control</b>	This antibody gave a positive signal in MEF1 whole cell lysate and HeLa nuclear extract.

### Properties

<b>Form</b>	Liquid
<b>Storage instructions</b>	Shipped at 4°C. Store at +4°C short term (1-2 weeks). Upon delivery aliquot. Store at -20°C or -80°C. Avoid freeze / thaw cycle.
<b>Storage buffer</b>	Preservative: 0.02% Sodium Azide Constituents: 1% BSA, PBS, pH 7.4
<b>Purity</b>	Immunogen affinity purified
<b>Clonality</b>	Polyclonal
<b>Isotype</b>	IgG

### Applications

Our [Abpromise guarantee](#) covers the use of **ab31765** in the following tested applications.

The application notes include recommended starting dilutions; optimal dilutions/concentrations should be determined by the end user.

Application	Abreviews	Notes
WB		Use a concentration of 1 µg/ml. Detects a band of approximately 30 kDa (predicted molecular weight: 28 kDa).

## Target

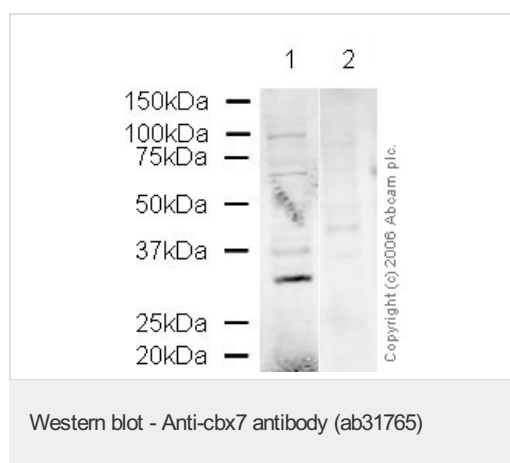
### Relevance

Control of cell proliferation by Polycomb group proteins (PcG) is an important facet of cellular homeostasis and its disruption can promote tumorigenesis. CBX7 is a novel PcG protein which is found to control the growth of normal cells. CBX7 is a gene that encodes a Polycomb protein, as shown by sequence homology, its interaction with Ring1 and its localization to nuclear Polycomb bodies. CBX7 extends the lifespan of a wide range of normal human cells and immortalizes mouse fibroblasts by downregulating expression of the *Ink4a/Arf* locus. CBX7 does not inter-function or colocalize with Bmi1, and both can exert their actions independently of each other as shown by reverse genetics. CBX7 was highly expressed in three different prostate cancer cell lines and present at elevated levels in normal prostate. (Gil et al., 2004).

### Cellular localization

Nuclear

## Images



**All lanes :** Anti-cbx7 antibody (ab31765) at 1 µg/ml

**Lane 1 :** HeLa nuclear Lysate

**Lane 2 :** HeLa nuclear Lysate with Human cbx7 peptide ([ab22423](#)) at 1 µg/ml

Lysates/proteins at 20 µg per lane.

### Secondary

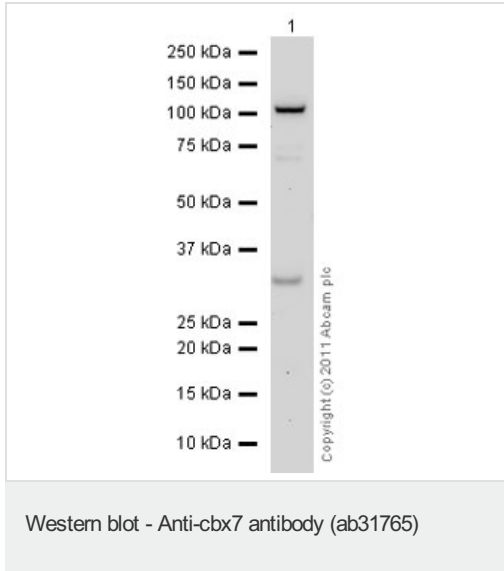
**All lanes :** Secondary ab: Alexa Fluor Goat polyclonal to Rabbit IgG (700)

**Predicted band size:** 28 kDa

**Observed band size:** 35 kDa

[why is the actual band size different from the predicted?](#)

A clear band at the expected size appears in lane 1. This band is specifically blocked by the immunizing peptide in lane 2.



Anti-cbx7 antibody (ab31765) at 1 µg/ml + MEF1 (Mouse embryonic fibroblast cell line) Whole Cell Lysate at 10 µg

#### Secondary

Goat Anti-Rabbit IgG H&L (HRP) preadsorbed (ab97080) at 1/5000 dilution

Developed using the ECL technique.

Performed under reducing conditions.

**Predicted band size:** 28 kDa

**Observed band size:** 28 kDa

**Additional bands at:** 100 kDa. We are unsure as to the identity of these extra bands.

**Exposure time:** 20 minutes

**Please note:** All products are "FOR RESEARCH USE ONLY AND ARE NOT INTENDED FOR DIAGNOSTIC OR THERAPEUTIC USE"

#### Our Abpromise to you: Quality guaranteed and expert technical support

- Replacement or refund for products not performing as stated on the datasheet
- Valid for 12 months from date of delivery
- Response to your inquiry within 24 hours
- We provide support in Chinese, English, French, German, Japanese and Spanish
- Extensive multi-media technical resources to help you
- We investigate all quality concerns to ensure our products perform to the highest standards

If the product does not perform as described on this datasheet, we will offer a refund or replacement. For full details of the Abpromise, please visit <https://www.abcam.com/abpromise> or contact our technical team.

#### Terms and conditions

- Guarantee only valid for products bought direct from Abcam or one of our authorized distributors