

Product datasheet

Anti-CC2D1A antibody ab68302

[3 References](#) [4 Images](#)

Overview

Product name	Anti-CC2D1A antibody
Description	Mouse polyclonal to CC2D1A
Host species	Mouse
Specificity	This antibody is reactive against mammalian transfected lysate.
Tested applications	Suitable for: ICC/IF, IHC-P, WB
Species reactivity	Reacts with: Human
Immunogen	CC2D1A (NP_060191, 1 a.a. ~ 951 a.a) full-length human protein.
Positive control	CC2D1A transfected 293T cell lysate and human liver tissue lysate
General notes	<p>Reproducibility is key to advancing scientific discovery and accelerating scientists' next breakthrough.</p> <p>Abcam is leading the way with our range of recombinant antibodies, knockout-validated antibodies and knockout cell lines, all of which support improved reproducibility.</p> <p>We are also planning to innovate the way in which we present recommended applications and species on our product datasheets, so that only applications & species that have been tested in our own labs, our suppliers or by selected trusted collaborators are covered by our Abpromise™ guarantee.</p> <p>In preparation for this, we have started to update the applications & species that this product is Abpromise guaranteed for.</p> <p>We are also updating the applications & species that this product has been “predicted to work with,” however this information is not covered by our Abpromise guarantee.</p> <p>Applications & species from publications and Abreviews that have not been tested in our own labs or in those of our suppliers are not covered by the Abpromise guarantee.</p> <p>Please check that this product meets your needs before purchasing. If you have any questions, special requirements or concerns, please send us an inquiry and/or contact our Support team ahead of purchase. Recommended alternatives for this product can be found below, as well as customer reviews and Q&As.</p>

Properties

Form	Liquid
-------------	--------

Storage instructions	Shipped at 4°C. Upon delivery aliquot and store at -20°C or -80°C. Avoid repeated freeze / thaw cycles.
Storage buffer	pH: 7.4 Constituent: 2.68% PBS
Purity	Protein G purified
Clonality	Polyclonal
Isotype	IgG

Applications

Our [Abpromise guarantee](#) covers the use of **ab68302** in the following tested applications.

The application notes include recommended starting dilutions; optimal dilutions/concentrations should be determined by the end user.

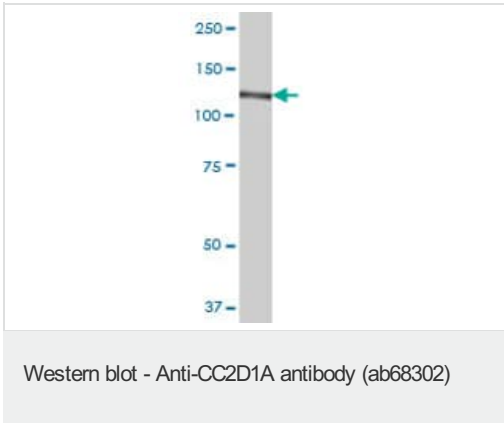
Application	Abreviews	Notes
ICC/IF		Use a concentration of 10 µg/ml.
IHC-P		Use a concentration of 3 µg/ml.
WB		1/500 - 1/1000. Detects a band of approximately 104 to 125 kDa (predicted molecular weight: 104 kDa).

Target

Relevance CC2D1A belongs to the CC2D1 family. It contains one C2 domain. It is a transcription factor that binds specifically to the FRE (five repressor element) and represses HTR1A gene transcription in neuronal cells. The combination of calcium and ATP specifically inactivates the binding with FRE. CC2D1A may play a role in the altered regulation of HTR1A associated with anxiety and major depression. It also mediates HDAC-independent repression of HTR1A promoter in neuronal cell. There are three named isoforms. Defects in CC2D1A are the cause of non-syndromic mental retardation autosomal recessive type 3 (MRT3). Patients display severe mental retardation and psychomotor development delay in early childhood. Non-syndromic mental retardation patients do not manifest other clinical signs.

Cellular localization Cytoplasm. Nucleus.

Images



Anti-CC2D1A antibody (ab68302) at 1/500 dilution + human liver tissue lysate at 25 µg

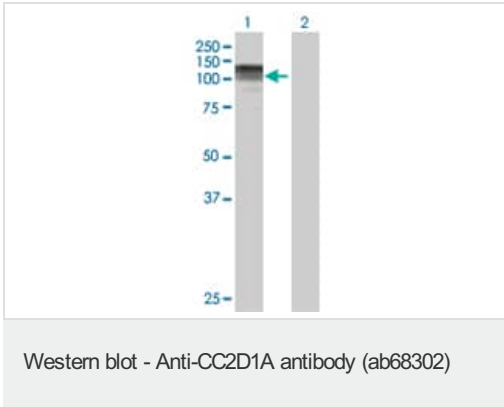
Secondary

Goat Anti-Mouse IgG (H&L)-HRP Conjugate at 1/2500 dilution

Predicted band size: 104 kDa

Observed band size: 125 kDa

[why is the actual band size different from the predicted?](#)



All lanes : Anti-CC2D1A antibody (ab68302) at 1/500 dilution

Lane 1 : CC2D1A transfected 293T cell lysate

Lane 2 : Non-transfected 293T cell lysate

Lysates/proteins at 25 µg per lane.

Secondary

All lanes : Goat Anti-Mouse IgG (H&L)-HRP Conjugate at 1/2500 dilution

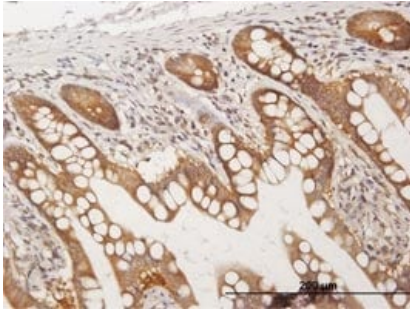
Predicted band size: 104 kDa

Observed band size: 104 kDa

Additional bands at: 125 kDa. We are unsure as to the identity of these extra bands.



Immunofluorescence of ab68302 staining on HeLa cell at a concentration of 10 µg/ml.



Immunoperoxidase of ab68302 on formalin-fixed paraffin-embedded human small intestine. Antibody concentration, 3 ug/ml.

Immunohistochemistry (Formalin/PFA-fixed paraffin-embedded sections) - Anti-CC2D1A antibody (ab68302)

Please note: All products are "FOR RESEARCH USE ONLY. NOT FOR USE IN DIAGNOSTIC PROCEDURES"

Our Abpromise to you: Quality guaranteed and expert technical support

- Replacement or refund for products not performing as stated on the datasheet
- Valid for 12 months from date of delivery
- Response to your inquiry within 24 hours
- We provide support in Chinese, English, French, German, Japanese and Spanish
- Extensive multi-media technical resources to help you
- We investigate all quality concerns to ensure our products perform to the highest standards

If the product does not perform as described on this datasheet, we will offer a refund or replacement. For full details of the Abpromise, please visit <https://www.abcam.com/abpromise> or contact our technical team.

Terms and conditions

- Guarantee only valid for products bought direct from Abcam or one of our authorized distributors