

Product datasheet

Anti-CCDC42B antibody ab151025

3 Images

Overview

Product name	Anti-CCDC42B antibody
Description	Rabbit polyclonal to CCDC42B
Host species	Rabbit
Tested applications	Suitable for: IHC-P, ICC/IF
Species reactivity	Reacts with: Human
Immunogen	Recombinant fragment, corresponding to amino acids 9-82 of Human CCDC42B (A6NFT4). Run BLAST with ExPASy Run BLAST with NCBI
Positive control	ICC: REH whole cells; IHC-P: Human Fallopian tube and prostate tissue.
General notes	<p>The antibody solution should be gently mixed before use.</p> <p>The Life Science industry has been in the grips of a reproducibility crisis for a number of years. Abcam is leading the way in addressing this with our range of recombinant monoclonal antibodies and knockout edited cell lines for gold-standard validation. Please check that this product meets your needs before purchasing.</p> <p>If you have any questions, special requirements or concerns, please send us an inquiry and/or contact our Support team ahead of purchase. Recommended alternatives for this product can be found below, along with publications, customer reviews and Q&As</p>

Properties

Form	Liquid
Storage instructions	Shipped at 4°C. Upon delivery aliquot and store at -20°C. Avoid repeated freeze / thaw cycles.
Storage buffer	pH: 7.20 Preservative: 0.02% Sodium azide Constituents: 59% PBS, 40% Glycerol (glycerin, glycerine)
Purity	Immunogen affinity purified
Clonality	Polyclonal
Isotype	IgG

Applications

The Abpromise guarantee

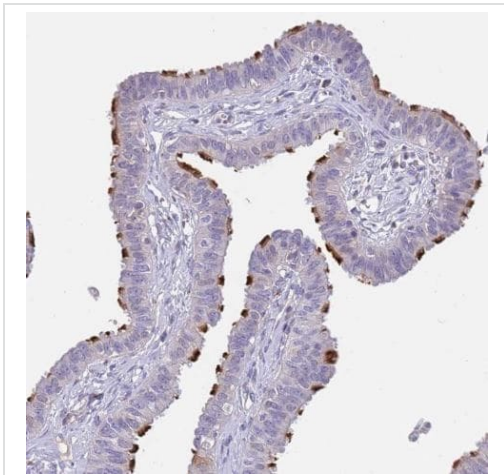
Our [Abpromise guarantee](#) covers the use of ab151025 in the following tested applications.

The application notes include recommended starting dilutions; optimal dilutions/concentrations should be determined by the end user.

Application	Abreviews	Notes
IHC-P		1/20 - 1/50. Perform heat mediated antigen retrieval with citrate buffer pH 6 before commencing with IHC staining protocol.
ICC/IF		Use a concentration of 0.25 - 2 µg/ml. Fixation/Permeabilization: PFA/Triton X-100

Target

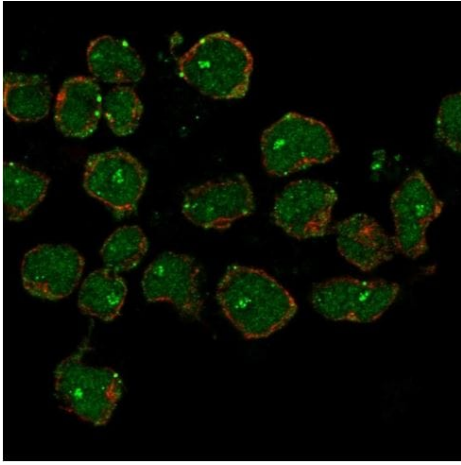
Images



Immunohistochemistry analysis of human fallopian tube labeling CCDC42B (high expression) with ab151025 at a 1/20 dilution.

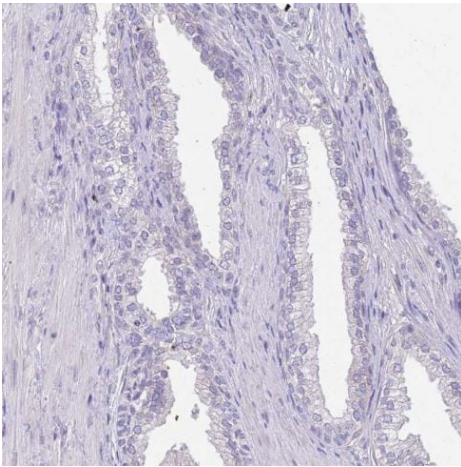
Performed heat mediated antigen retrieval with citrate buffer pH 6 before commencing with IHC staining protocol.

Immunohistochemistry (Formalin/PFA-fixed paraffin-embedded sections) - Anti-CCDC42B antibody (ab151025)



Immunocytochemistry/ Immunofluorescence - Anti-CCDC42B antibody (ab151025)

Immunofluorescence analysis of REH (human pre-B cell leukemia cell line) whole cells labelling CCDC42B at the nucleus and nucleoli fibrillar center and vesicles with ab151025 at 2 µg/mL.



Immunohistochemistry (Formalin/PFA-fixed paraffin-embedded sections) - Anti-CCDC42B antibody (ab151025)

Immunohistochemistry analysis of human prostate labeling CCDC42B (low expression) with ab151025 at a 1/20 dilution.

Performed heat mediated antigen retrieval with citrate buffer pH 6 before commencing with IHC staining protocol.

Please note: All products are "FOR RESEARCH USE ONLY. NOT FOR USE IN DIAGNOSTIC PROCEDURES"

Our Abpromise to you: Quality guaranteed and expert technical support

- Replacement or refund for products not performing as stated on the datasheet
- Valid for 12 months from date of delivery
- Response to your inquiry within 24 hours
- We provide support in Chinese, English, French, German, Japanese and Spanish
- Extensive multi-media technical resources to help you
- We investigate all quality concerns to ensure our products perform to the highest standards

If the product does not perform as described on this datasheet, we will offer a refund or replacement. For full details of the Abpromise, please visit <https://www.abcam.com/abpromise> or contact our technical team.

Terms and conditions

- Guarantee only valid for products bought direct from Abcam or one of our authorized distributors