

Product datasheet

Anti-CCL23 antibody - C-terminal ab199167

2 Images

Overview

Product name	Anti-CCL23 antibody - C-terminal
Description	Rabbit polyclonal to CCL23 - C-terminal
Host species	Rabbit
Tested applications	Suitable for: IHC-P
Species reactivity	Reacts with: Human
Immunogen	Synthetic peptide corresponding to Human CCL23 (C terminal). NP_005055. Database link: P55773-2
Positive control	Human thyroid cancer and Human lymphoma tissues.
General notes	Previously labelled as Macrophage Inflammatory Protein 3.

Properties

Form	Liquid
Storage instructions	Shipped at 4°C. Store at +4°C short term (1-2 weeks). Upon delivery aliquot. Store at -20°C long term. Avoid freeze / thaw cycle.
Storage buffer	pH: 7.3 Preservative: 0.05% Sodium azide Constituents: 49% PBS, 50% Glycerol
Purity	Immunogen affinity purified
Clonality	Polyclonal
Isotype	IgG

Applications

Our [Abpromise guarantee](#) covers the use of **ab199167** in the following tested applications.

The application notes include recommended starting dilutions; optimal dilutions/concentrations should be determined by the end user.

Application	Abreviews	Notes
IHC-P		1/50 - 1/200.

Target

Function

Shows chemotactic activity for monocytes, resting T-lymphocytes, and neutrophils, but not for activated lymphocytes. Inhibits proliferation of myeloid progenitor cells in colony formation assays. This protein can bind heparin. Binds CCR1. CCL23(19-99), CCL23(22-99), CCL23(27-99), CCL23(30-99) are more potent chemoattractants than the small-inducible cytokine A23.

Tissue specificity

High levels in adult lung, liver, skeletal muscle and pancreas. Moderate levels in fetal liver, adult bone marrow and placenta. The short form is the major species and the longer form was detected only in very low abundance. CCL23(19-99), CCL23(22-99), CCL23(27-99), CCL23(30-99) are found in high levels in synovial fluids from rheumatoid patients.

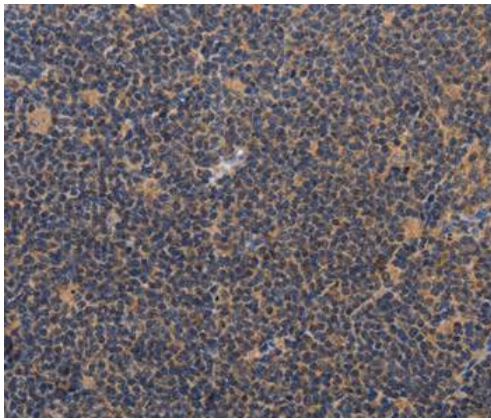
Sequence similarities

Belongs to the intercrine beta (chemokine CC) family.

Cellular localization

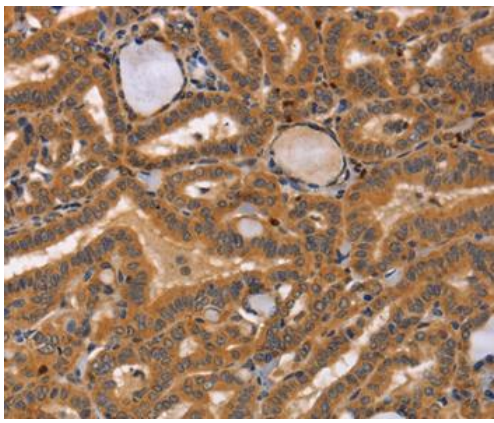
Secreted.

Images



Immunohistochemical analysis of paraffin-embedded Human lymphoma tissue labeling CCL23 with ab199167 at 1/50 dilution.

Immunohistochemistry (Formalin/PFA-fixed paraffin-embedded sections) - Anti-CCL23 antibody - C-terminal (ab199167)



Immunohistochemical analysis of paraffin-embedded Human thyroid cancer tissue labeling CCL23 with ab199167 at 1/50 dilution.

Immunohistochemistry (Formalin/PFA-fixed paraffin-embedded sections) - Anti-CCL23 antibody - C-terminal (ab199167)

Please note: All products are "FOR RESEARCH USE ONLY. NOT FOR USE IN DIAGNOSTIC PROCEDURES"

Our Abpromise to you: Quality guaranteed and expert technical support

- Replacement or refund for products not performing as stated on the datasheet
- Valid for 12 months from date of delivery
- Response to your inquiry within 24 hours
- We provide support in Chinese, English, French, German, Japanese and Spanish
- Extensive multi-media technical resources to help you
- We investigate all quality concerns to ensure our products perform to the highest standards

If the product does not perform as described on this datasheet, we will offer a refund or replacement. For full details of the Abpromise, please visit <https://www.abcam.com/abpromise> or contact our technical team.

Terms and conditions

- Guarantee only valid for products bought direct from Abcam or one of our authorized distributors