

Product datasheet

Anti-CCL3L1 antibody - C-terminal ab182789

1 Image

Overview

Product name	Anti-CCL3L1 antibody - C-terminal
Description	Rabbit Polyclonal to CCL3L1 - C-terminal
Host species	Rabbit
Tested applications	Suitable for: WB
Species reactivity	Reacts with: Mouse, Human
Immunogen	Synthetic peptide corresponding to Human CCL3L1 aa 80-93 (C terminal). Sequence: EWWQKYVSDLELSA Database link: P16619
	Run BLAST with Run BLAST with

Properties

Form	Liquid
Storage instructions	Shipped at 4°C. Store at +4°C short term (1-2 weeks). Upon delivery aliquot. Store at -20°C long term. Avoid freeze / thaw cycle.
Storage buffer	pH: 7.3 Preservative: 0.05% Sodium azide Constituents: 50% Glycerol, 49% PBS (without Mg ²⁺ and Ca ²⁺)
Purity	Immunogen affinity purified
Clonality	Polyclonal
Isotype	IgG

Applications

Our [Abpromise guarantee](#) covers the use of **ab182789** in the following tested applications.

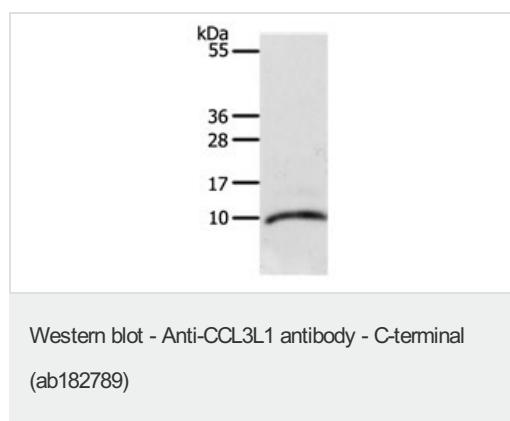
The application notes include recommended starting dilutions; optimal dilutions/concentrations should be determined by the end user.

Application	Abreviews	Notes
WB		1/500 - 1/2000. Predicted molecular weight: 10 kDa.

Target

Function	Chemotactic for lymphocytes and monocytes. Is a ligand for CCR1, CCR3 and CCR5. Is an inhibitor of HIV-1-infection. The processed form LD78-beta(3-70) shows a 20-fold to 30-fold higher chemotactic activity and is a very potent inhibitor of HIV-1-infection. LD78-beta(3-70) is also a ligand for CCR1, CCR3 and CCR5.
Sequence similarities	Belongs to the intercrine beta (chemokine CC) family.
Post-translational modifications	The N-terminal processed forms LD78-beta(3-70) and LD78-beta(5-70) are produced by proteolytic cleavage after secretion from peripheral blood monocytes. The cleavage to yield LD78-beta(3-70) is probably achieved by DPP4.
Cellular localization	Secreted.

Images



Anti-CCL3L1 antibody - C-terminal (ab182789) at 1/700 dilution + RAW 264.7 cell at 40 µg

Secondary

Goat anti Rabbit IgG at 1/10000 dilution

Predicted band size: 10 kDa

Exposure time: 45 seconds

Please note: All products are "FOR RESEARCH USE ONLY. NOT FOR USE IN DIAGNOSTIC PROCEDURES"

Our Abpromise to you: Quality guaranteed and expert technical support

- Replacement or refund for products not performing as stated on the datasheet
- Valid for 12 months from date of delivery
- Response to your inquiry within 24 hours
- We provide support in Chinese, English, French, German, Japanese and Spanish
- Extensive multi-media technical resources to help you
- We investigate all quality concerns to ensure our products perform to the highest standards

If the product does not perform as described on this datasheet, we will offer a refund or replacement. For full details of the Abpromise, please visit <https://www.abcam.com/abpromise> or contact our technical team.

Terms and conditions

- Guarantee only valid for products bought direct from Abcam or one of our authorized distributors