

Product datasheet

Anti-CCM2 antibody ab129386

3 Images

Overview

Product name	Anti-CCM2 antibody
Description	Rabbit polyclonal to CCM2
Host species	Rabbit
Tested applications	Suitable for: WB, ICC/IF
Species reactivity	Reacts with: Human
Immunogen	Recombinant full length protein (His-tag) corresponding to Human CCM2 aa 1-444. Database link: Q9BSQ5
Positive control	ICC/IF: Human foreskin tissue WB: CCM2 overexpressed in COS1 cells
General notes	<p>Reproducibility is key to advancing scientific discovery and accelerating scientists' next breakthrough.</p> <p>Abcam is leading the way with our range of recombinant antibodies, knockout-validated antibodies and knockout cell lines, all of which support improved reproducibility.</p> <p>We are also planning to innovate the way in which we present recommended applications and species on our product datasheets, so that only applications & species that have been tested in our own labs, our suppliers or by selected trusted collaborators are covered by our Abpromise™ guarantee.</p> <p>In preparation for this, we have started to update the applications & species that this product is Abpromise guaranteed for.</p> <p>We are also updating the applications & species that this product has been "predicted to work with," however this information is not covered by our Abpromise guarantee.</p> <p>Applications & species from publications and Abreviews that have not been tested in our own labs or in those of our suppliers are not covered by the Abpromise guarantee.</p> <p>Please check that this product meets your needs before purchasing. If you have any questions, special requirements or concerns, please send us an inquiry and/or contact our Support team ahead of purchase. Recommended alternatives for this product can be found below, as well as customer reviews and Q&As.</p>

Properties

Form	Liquid
-------------	--------

Storage instructions	Shipped at 4°C. Store at +4°C short term (1-2 weeks). Upon delivery aliquot. Store at -20°C long term. Avoid freeze / thaw cycle.
Storage buffer	Constituent: PBS
Purity	Protein A purified
Purification notes	Endotoxin level: <0.1 EU/1µg of ab129386 (LAL)
Clonality	Polyclonal
Isotype	IgG

Applications

Our [Abpromise guarantee](#) covers the use of **ab129386** in the following tested applications.

The application notes include recommended starting dilutions; optimal dilutions/concentrations should be determined by the end user.

Application	Abreviews	Notes
WB		Use a concentration of 1 - 5 µg/ml. Predicted molecular weight: 49 kDa.
ICC/IF		1/200.

Target

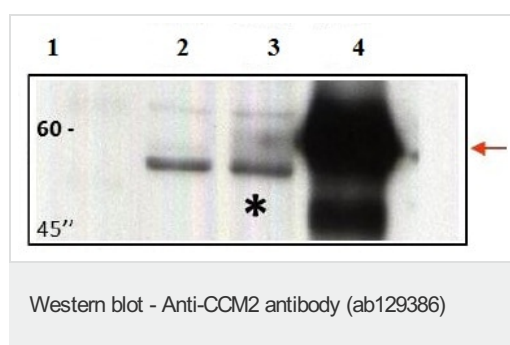
Function May function as a scaffold protein for MAP2K3-MAP3K3 signaling. Seems to play a major role in the modulation of MAP3K3-dependent p38 activation induced by hyperosmotic shock.

Involvement in disease Defects in CCM2 are the cause of cerebral cavernous malformations type 2 (CCM2) [MIM:603284]. Cerebral cavernous malformations (CCMs) are congenital vascular anomalies of the central nervous system that can result in hemorrhagic stroke, seizures, recurrent headaches, and focal neurologic deficits. CCMs have an incidence of 0.1%-0.5% in the general population and are usually present clinically during the 3rd to 5th decades of life. The lesions are characterized by grossly enlarged blood vessels consisting of a single layer of endothelium and without any intervening neural tissue, ranging in diameter from a few millimeters to several centimeters.

Sequence similarities Contains 1 PID domain.

Cellular localization Cytoplasm.

Images



All lanes : Anti-CCM2 antibody (ab129386) at 5 µg/ml

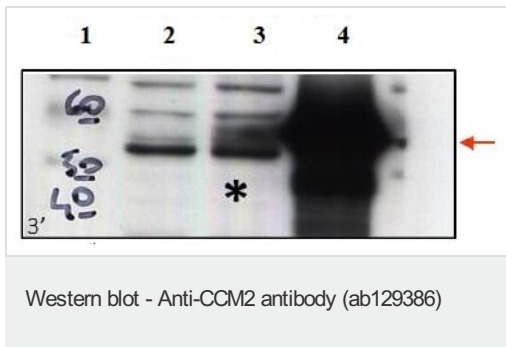
Lane 1 : Mwt marker

Lane 2 : CCM2 knockout

Lane 3 : CCM2 wildtype

Lane 4 : CCM2 overexpressed in COS1 cells

Predicted band size: 49 kDa



All lanes : Anti-CCM2 antibody (ab129386) at 5 µg/ml

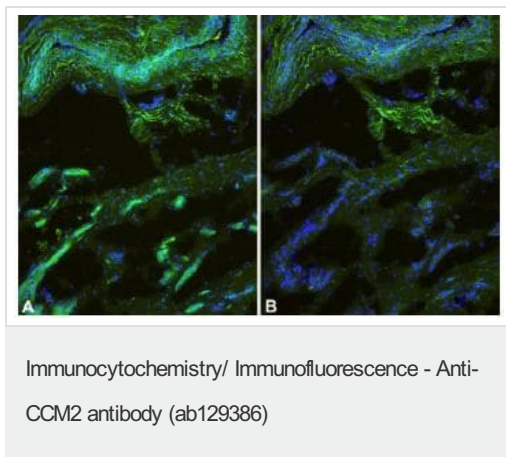
Lane 1 : Mwt marker

Lane 2 : CCM2 knockout

Lane 3 : CCM2 wildtype

Lane 4 : CCM2 overexpressed in COS1 cells

Predicted band size: 49 kDa



ab129386, at a 1/50 dilution, staining CCM2 (green) in a cryo-section of unfixed Human foreskin tissue by Immunofluorescence.

A) Note specific staining in the wall of microvessels.

B) Negative control of a consecutive section.

Note non-specific fluorescence in elastic fibres in the adventitia of an arterioli.

Nuclei counter-stained with Dapi (blue).

Please note: All products are "FOR RESEARCH USE ONLY. NOT FOR USE IN DIAGNOSTIC PROCEDURES"

Our Abpromise to you: Quality guaranteed and expert technical support

- Replacement or refund for products not performing as stated on the datasheet
- Valid for 12 months from date of delivery
- Response to your inquiry within 24 hours
- We provide support in Chinese, English, French, German, Japanese and Spanish
- Extensive multi-media technical resources to help you
- We investigate all quality concerns to ensure our products perform to the highest standards

If the product does not perform as described on this datasheet, we will offer a refund or replacement. For full details of the Abpromise, please visit <https://www.abcam.com/abpromise> or contact our technical team.

Terms and conditions

- Guarantee only valid for products bought direct from Abcam or one of our authorized distributors