




Product datasheet

Anti-CCP5 antibody ab224138

2 Images

Overview

Product name	Anti-CCP5 antibody
Description	Rabbit polyclonal to CCP5
Host species	Rabbit
Tested applications	Suitable for: ICC/IF, IHC-P
Species reactivity	Reacts with: Human Predicted to work with: Cow, Giant Panda 
Immunogen	Recombinant fragment corresponding to Human CCP5 aa 150-235. H192R. Sequence: TFFAFICYPFYSYSDCQELLNQLDQRFPENHPTHSSPLDTIY YRRELLCYS LDGLRVDLLTITSCHGLREDREPRLEQLFPDTSTPR Database link: Q8NDL9  Run BLAST with  Run BLAST with
Positive control	IHC-P: Human testis tissue. ICC: U-2 OS cells.
General notes	This product was previously labelled as AGBL5

Reproducibility is key to advancing scientific discovery and accelerating scientists' next breakthrough.

Abcam is leading the way with our range of recombinant antibodies, knockout-validated antibodies and knockout cell lines, all of which support improved reproducibility.

We are also planning to innovate the way in which we present recommended applications and species on our product datasheets, so that only applications & species that have been tested in our own labs, our suppliers or by selected trusted collaborators are covered by our Abpromise™ guarantee.

In preparation for this, we have started to update the applications & species that this product is Abpromise guaranteed for.

We are also updating the applications & species that this product has been "predicted to work with," however this information is not covered by our Abpromise guarantee.

Applications & species from publications and Abreviews that have not been tested in our own labs or in those of our suppliers are not covered by the Abpromise guarantee.

Please check that this product meets your needs before purchasing. If you have any questions, special requirements or concerns, please send us an inquiry and/or contact our Support team ahead of purchase. Recommended alternatives for this product can be found below, as well as customer reviews and Q&As.

Properties

Form	Liquid
Storage instructions	Shipped at 4°C. Store at +4°C short term (1-2 weeks). Upon delivery aliquot. Store at -20°C long term. Avoid freeze / thaw cycle.
Storage buffer	pH: 7.20 Preservative: 0.02% Sodium azide Constituents: 40% Glycerol (glycerin, glycerine), PBS
Purity	Immunogen affinity purified
Clonality	Polyclonal
Isotype	IgG

Applications

Our [Abpromise guarantee](#) covers the use of **ab224138** in the following tested applications.

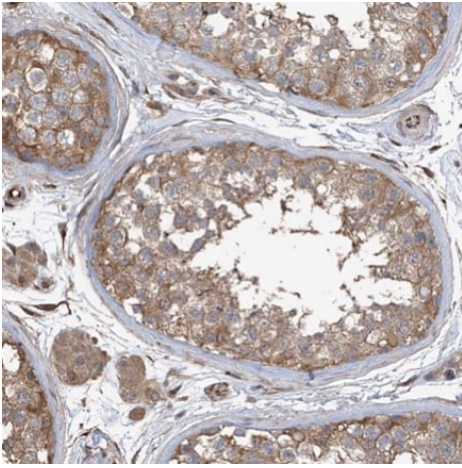
The application notes include recommended starting dilutions; optimal dilutions/concentrations should be determined by the end user.

Application	Abreviews	Notes
ICC/IF		Use a concentration of 0.25 - 2 µg/ml. Fixation/Permeabilization: PFA/Triton X-100
IHC-P		1/50 - 1/200. Perform heat mediated antigen retrieval with citrate buffer pH 6 before commencing with IHC staining protocol.

Target

Function	Metalloprotease that mediates tubulin deglutamylation. Specifically catalyzes the deglutamylation of the branching point glutamate side chains generated by post-translational glutamylation in proteins such as tubulins. In contrast, it is not able to act as a long-chain deglutamylase that shortens long polyglutamate chains, a process catalyzed by AGTPBP1/CCP1, AGL1/CCP4 and AGL4/CCP6.
Tissue specificity	Expressed in brain.
Sequence similarities	Belongs to the peptidase M14 family.
Cellular localization	Cytoplasm > cytosol. Nucleus. Mainly cytoplasmic. Slight accumulation in the nucleus is observed.

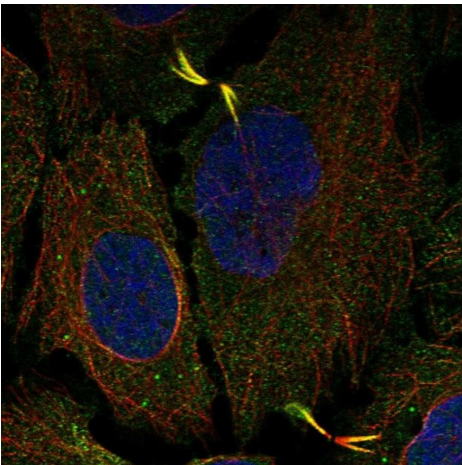
Images



Immunohistochemistry (Formalin/PFA-fixed paraffin-embedded sections) - Anti-CCP5 antibody (ab224138)

Immunohistochemical analysis of human testis tissue labeling CCP5 in the cytoplasm of cells in seminiferous ducts and Leydig cells with ab224138 at 1/50 dilution.

Performed heat mediated antigen retrieval with citrate buffer pH 6 before commencing with IHC staining protocol.



Immunocytochemistry/ Immunofluorescence - Anti-CCP5 antibody (ab224138)

Immunofluorescent analysis of U-2 OS (human bone osteosarcoma epithelial cell line) whole cells labeling CCP5 in cytosol, microtubules and cytokinetic bridge with ab224138 at 2 µg/ml.

Please note: All products are "FOR RESEARCH USE ONLY. NOT FOR USE IN DIAGNOSTIC PROCEDURES"

Our Abpromise to you: Quality guaranteed and expert technical support

- Replacement or refund for products not performing as stated on the datasheet
- Valid for 12 months from date of delivery
- Response to your inquiry within 24 hours
- We provide support in Chinese, English, French, German, Japanese and Spanish
- Extensive multi-media technical resources to help you
- We investigate all quality concerns to ensure our products perform to the highest standards

If the product does not perform as described on this datasheet, we will offer a refund or replacement. For full details of the Abpromise, please visit <https://www.abcam.com/abpromise> or contact our technical team.

Terms and conditions

- Guarantee only valid for products bought direct from Abcam or one of our authorized distributors