

Product datasheet

Anti-CCR3 antibody ab25789

1 Image

Overview

<b>Product name</b>	Anti-CCR3 antibody
<b>Description</b>	Goat polyclonal to CCR3
<b>Host species</b>	Goat
<b>Specificity</b>	This antibody recognizes mouse CCR3 and the peptide sequence is < 50 % identical to other chemokine receptors in this region.
<b>Tested applications</b>	<b>Suitable for:</b> WB, ICC, IHC-P
<b>Species reactivity</b>	<b>Reacts with:</b> Mouse
<b>Immunogen</b>	Synthetic peptide: TDEIKTVVESFETTPYEYEWAPP , corresponding to N terminal amino acids 5-29 of Mouse CCR3 <a href="#">Run BLAST with</a> <a href="#">Run BLAST with</a>
<b>Positive control</b>	Human spleen sections or cytosmears/cytospins of human peripheral blood leukocytes. A549 cell line also has been shown to express CCR3 receptor.

Properties

<b>Form</b>	Liquid
<b>Storage instructions</b>	Shipped at 4°C. Upon delivery aliquot and store at -20°C or -80°C. Avoid repeated freeze / thaw cycles.
<b>Storage buffer</b>	pH: 7.20 Preservative: 0.1% Sodium azide Constituents: 0.21% Potassium phosphate, 0.812% Sodium chloride, 0.1% BSA
<b>Purity</b>	Protein G purified
<b>Clonality</b>	Polyclonal
<b>Isotype</b>	IgG

Applications

Our [Abpromise guarantee](#) covers the use of **ab25789** in the following tested applications.

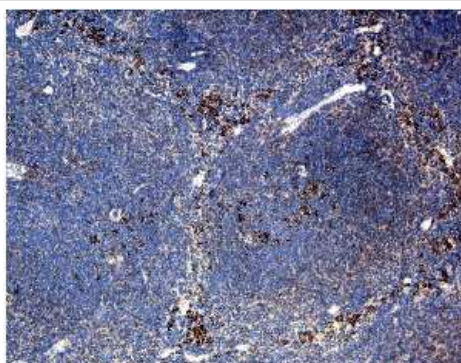
The application notes include recommended starting dilutions; optimal dilutions/concentrations should be determined by the end user.

Application	Abreviews	Notes
WB		1/1000. Predicted molecular weight: 43 kDa.
ICC		1/400.
IHC-P		Use at an assay dependent dilution.

## Target

<b>Function</b>	Receptor for a C-C type chemokine. Binds to eotaxin, eotaxin-3, MCP-3, MCP-4, RANTES and MIP-1 delta. Subsequently transduces a signal by increasing the intracellular calcium ions level. Alternative coreceptor with CD4 for HIV-1 infection.
<b>Tissue specificity</b>	In eosinophils as well as trace amounts in neutrophils and monocytes.
<b>Sequence similarities</b>	Belongs to the G-protein coupled receptor 1 family.
<b>Cellular localization</b>	Cell membrane.

## Images



Immunohistochemistry of CCR3 (ab25789) antibody to mouse CCR3 on paraffin section of mouse spleen.

Immunohistochemistry (Formalin/PFA-fixed paraffin-embedded sections) - Anti-CCR3 antibody (ab25789)

**Please note:** All products are "FOR RESEARCH USE ONLY. NOT FOR USE IN DIAGNOSTIC PROCEDURES"

## Our Abpromise to you: Quality guaranteed and expert technical support

- Replacement or refund for products not performing as stated on the datasheet
- Valid for 12 months from date of delivery
- Response to your inquiry within 24 hours
- We provide support in Chinese, English, French, German, Japanese and Spanish
- Extensive multi-media technical resources to help you
- We investigate all quality concerns to ensure our products perform to the highest standards

If the product does not perform as described on this datasheet, we will offer a refund or replacement. For full details of the Abpromise, please visit <https://www.abcam.com/abpromise> or contact our technical team.

### **Terms and conditions**

---

- Guarantee only valid for products bought direct from Abcam or one of our authorized distributors