


Product datasheet

Anti-CCR3 antibody [Y31] ab32512

Recombinant RabMAb

★★★★☆ 1 Abreviews 15 References 2 Images

Overview

Product name	Anti-CCR3 antibody [Y31]
Description	Rabbit monoclonal [Y31] to CCR3
Host species	Rabbit
Specificity	The mouse and rat recommendation is for WB use only. We do not guarantee IHC-P for mouse and rat.
Tested applications	Suitable for: WB, IHC-P Unsuitable for: Flow Cyt, ICC/IF or IP
Species reactivity	Reacts with: Mouse, Rat, Human Predicted to work with: Macaque monkey 
Immunogen	Synthetic peptide within Human CCR3 (C terminal). The exact sequence is proprietary.
Positive control	K562 and Daudi cell lysates and human liver tissue.
General notes	

This product is a recombinant monoclonal antibody, which offers several advantages including:

- High batch-to-batch consistency and reproducibility
- Improved sensitivity and specificity
- Long-term security of supply
- Animal-free production

For more information [see here](#).

Our RabMAb[®] technology is a patented hybridoma-based technology for making rabbit monoclonal antibodies. For details on our patents, please refer to [RabMAb[®] patents](#).

Properties

Form	Liquid
Storage instructions	Shipped at 4°C. Store at +4°C short term (1-2 weeks). Upon delivery aliquot. Store at -20°C. Avoid freeze / thaw cycle.
Storage buffer	pH: 7.20 Preservative: 0.01% Sodium azide

	Constituents: 49% PBS, 50% Glycerol, 0.05% BSA
Purity	Protein A purified
Clonality	Monoclonal
Clone number	Y31
Isotype	IgG

Applications

Our [Abpromise guarantee](#) covers the use of **ab32512** in the following tested applications.

The application notes include recommended starting dilutions; optimal dilutions/concentrations should be determined by the end user.

Application	Abreviews	Notes
WB	★★★★☆	1/500. Predicted molecular weight: 43 kDa.
IHC-P		1/100. Perform heat mediated antigen retrieval before commencing with IHC staining protocol. The mouse and rat recommendation is based on the WB results. We do not guarantee IHC-P for mouse and rat.

Application notes Is unsuitable for Flow Cyt, ICC/IF or IP.

Target

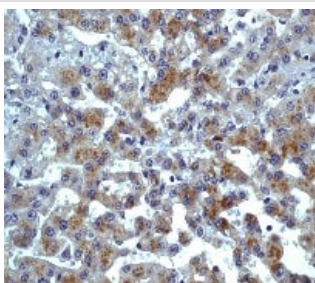
Function Receptor for a C-C type chemokine. Binds to eotaxin, eotaxin-3, MCP-3, MCP-4, RANTES and MIP-1 delta. Subsequently transduces a signal by increasing the intracellular calcium ions level. Alternative coreceptor with CD4 for HIV-1 infection.

Tissue specificity In eosinophils as well as trace amounts in neutrophils and monocytes.

Sequence similarities Belongs to the G-protein coupled receptor 1 family.

Cellular localization Cell membrane.

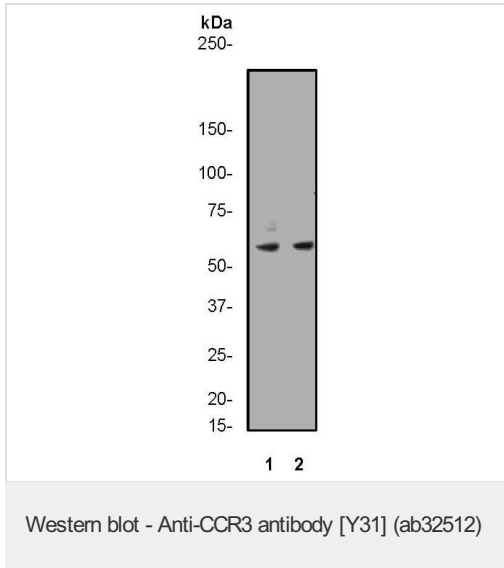
Images



Immunohistochemical analysis of paraffin-embedded human liver tissue using ab32512 at 1/100 dilution.

Perform heat mediated antigen retrieval before commencing with IHC staining protocol.

Immunohistochemistry (Formalin/PFA-fixed paraffin-embedded sections) - Anti-CCR3 antibody [Y31] (ab32512)



All lanes : Anti-CCR3 antibody [Y31] (ab32512) at 1/500 dilution

Lane 1 : K562 cell lysate

Lane 2 : Daudi cell lysate

Predicted band size: 43 kDa

Observed band size: 60 kDa

[why is the actual band size different from the predicted?](#)

Please note: All products are "FOR RESEARCH USE ONLY. NOT FOR USE IN DIAGNOSTIC PROCEDURES"

Our Abpromise to you: Quality guaranteed and expert technical support

- Replacement or refund for products not performing as stated on the datasheet
- Valid for 12 months from date of delivery
- Response to your inquiry within 24 hours
- We provide support in Chinese, English, French, German, Japanese and Spanish
- Extensive multi-media technical resources to help you
- We investigate all quality concerns to ensure our products perform to the highest standards

If the product does not perform as described on this datasheet, we will offer a refund or replacement. For full details of the Abpromise, please visit <https://www.abcam.com/abpromise> or contact our technical team.

Terms and conditions

- Guarantee only valid for products bought direct from Abcam or one of our authorized distributors