

Product datasheet

Anti-CCR4 antibody [KH-4F5] ab59550

★ ★ ★ ★ ★ 1 Abreviews 2 Images

Overview

Product name	Anti-CCR4 antibody [KH-4F5]
Description	Mouse monoclonal [KH-4F5] to CCR4
Host species	Mouse
Tested applications	Suitable for: Flow Cyt, ICC/IF
Species reactivity	Reacts with: Human
Immunogen	Synthetic peptide from human CCR4
General notes	<p>Reproducibility is key to advancing scientific discovery and accelerating scientists' next breakthrough.</p> <p>Abcam is leading the way with our range of recombinant antibodies, knockout-validated antibodies and knockout cell lines, all of which support improved reproducibility.</p> <p>We are also planning to innovate the way in which we present recommended applications and species on our product datasheets, so that only applications & species that have been tested in our own labs, our suppliers or by selected trusted collaborators are covered by our Abpromise™ guarantee.</p> <p>In preparation for this, we have started to update the applications & species that this product is Abpromise guaranteed for.</p> <p>We are also updating the applications & species that this product has been "predicted to work with," however this information is not covered by our Abpromise guarantee.</p> <p>Applications & species from publications and Abreviews that have not been tested in our own labs or in those of our suppliers are not covered by the Abpromise guarantee.</p> <p>Please check that this product meets your needs before purchasing. If you have any questions, special requirements or concerns, please send us an inquiry and/or contact our Support team ahead of purchase. Recommended alternatives for this product can be found below, as well as customer reviews and Q&As.</p>

Properties

Form	Liquid
Storage instructions	Shipped at 4°C. Store at +4°C short term (1-2 weeks). Upon delivery aliquot. Store at -20°C long term.
Storage buffer	pH: 7.20

	Constituent: PBS
Purity	Protein G purified
Clonality	Monoclonal
Clone number	KH-4F5
Isotype	IgG2a

Applications

Our [Abpromise guarantee](#) covers the use of **ab59550** in the following tested applications.

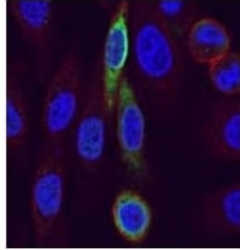
The application notes include recommended starting dilutions; optimal dilutions/concentrations should be determined by the end user.

Application	Abreviews	Notes
Flow Cyt		Use 1.2µg for 10 ⁶ cells. ab170191 - Mouse monoclonal IgG2a, is suitable for use as an isotype control with this antibody.
ICC/IF		Use 1µg for 10 ⁶ cells.

Target

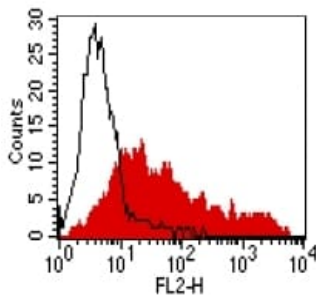
Function	High affinity receptor for the C-C type chemokines CCL17/TARC and CCL22/MDC. The activity of this receptor is mediated by G(i) proteins which activate a phosphatidylinositol-calcium second messenger system. Can function as a chemoattractant homing receptor on circulating memory lymphocytes and as a coreceptor for some primary HIV-2 isolates. In the CNS, could mediate hippocampal-neuron survival.
Tissue specificity	Predominantly expressed in the thymus, in peripheral blood leukocytes, including T-cells, mostly CD4+ cells, and basophils, and in platelets; at lower levels, in the spleen and in monocytes. Detected also in macrophages, IL-2-activated natural killer cells and skin-homing memory T-cells, mostly the ones expressing the cutaneous lymphocyte antigen (CLA). Expressed in brain microvascular and coronary artery endothelial cells.
Sequence similarities	Belongs to the G-protein coupled receptor 1 family.
Post-translational modifications	In natural killer cells, CCL22 binding induces phosphorylation on yet undefined Ser/Thr residues, most probably by beta-adrenergic receptor kinases 1 and 2.
Cellular localization	Cell membrane.

Images



Immunocytochemistry/ Immunofluorescence - Anti-CCR4 antibody [KH-4F5] (ab59550)

Spectral Confocal Microscopy of CHO cells using ab59550 at $1 \mu\text{g}/10^6$ cells. CHO cells were transiently transfected with an expression vector encoding CCR4. Binding of ab59550 was visualized with a FITC-conjugated secondary antibody (green). Actin filaments are labeled with Alexa Fluor-555 Phalloidin (red). Cell nuclei are stained with DAPI (blue).



Flow Cytometry - Anti-CCR4 antibody [KH-4F5] (ab59550)

FACS analysis of BOSC23 cells using ab59550 at $1.2 \mu\text{g}/10^6$ cells. BOSC23 cells were transiently transfected with an expression vector encoding either CCR4 (red curve) or an irrelevant protein (control transfectant). Binding of ab59550 was detected with a PE conjugated secondary antibody.

Please note: All products are "FOR RESEARCH USE ONLY. NOT FOR USE IN DIAGNOSTIC PROCEDURES"

Our Abpromise to you: Quality guaranteed and expert technical support

- Replacement or refund for products not performing as stated on the datasheet
- Valid for 12 months from date of delivery
- Response to your inquiry within 24 hours
- We provide support in Chinese, English, French, German, Japanese and Spanish
- Extensive multi-media technical resources to help you
- We investigate all quality concerns to ensure our products perform to the highest standards

If the product does not perform as described on this datasheet, we will offer a refund or replacement. For full details of the Abpromise, please visit <https://www.abcam.com/abpromise> or contact our technical team.

Terms and conditions

- Guarantee only valid for products bought direct from Abcam or one of our authorized distributors