

Product datasheet

Anti-CCR7 antibody [E75] ab32075

Recombinant **RabMAb**

[1 References](#) [1 Image](#)

Overview

Product name	Anti-CCR7 antibody [E75]
Description	Rabbit monoclonal [E75] to CCR7
Host species	Rabbit
Specificity	ab32075 recognises CCR7/CKR7. It does not cross react with other CKR family members
Tested applications	Suitable for: WB, Flow Cyt Unsuitable for: ICC,IHC or IP
Species reactivity	Reacts with: Mouse, Human Predicted to work with: Cow, Pig
Immunogen	A synthetic peptide corresponding to residues in loop-3 extracellular domain of human C-C chemokine receptor type 7
Positive control	Daudi cell lysate
General notes	Our RabMAb [®] technology is a patented hybridoma-based technology for making rabbit monoclonal antibodies. For details on our patents, please refer to RabMab[®] patents . This product is a recombinant rabbit monoclonal antibody .

Properties

Form	Liquid
Storage instructions	Shipped at 4°C. Upon delivery aliquot and store at -20°C. Avoid freeze / thaw cycles.
Storage buffer	pH: 7.20 Preservative: 0.01% Sodium azide Constituents: 49% PBS, 50% Glycerol, 0.05% BSA
Purity	IgG fraction
Clonality	Monoclonal
Clone number	E75
Isotype	IgG

Applications

Our [Abpromise guarantee](#) covers the use of **ab32075** in the following tested applications.

The application notes include recommended starting dilutions; optimal dilutions/concentrations should be determined by the end user.

Application	Abreviews	Notes
WB		1/500. Detects a band of approximately 53 kDa (predicted molecular weight: 43 kDa).
Flow Cyt		1/20. ab172730 - Rabbit monoclonal IgG, is suitable for use as an isotype control with this antibody.

Application notes Is unsuitable for ICC,IHC or IP.

Target

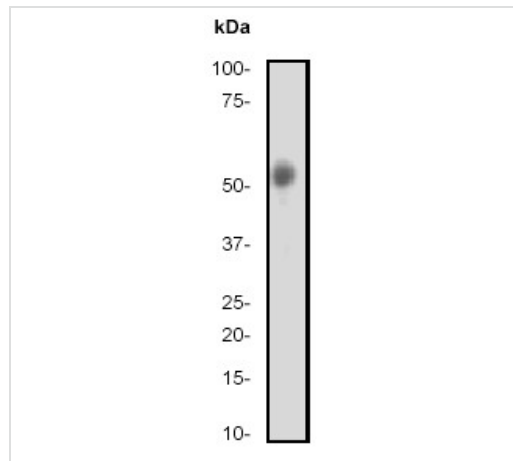
Function Receptor for the MIP-3-beta chemokine. Probable mediator of EBV effects on B-lymphocytes or of normal lymphocyte functions.

Tissue specificity Expressed in various lymphoid tissues and activated B- and T-lymphocytes, strongly up-regulated in B-cells infected with Epstein-Barr virus and T-cells infected with herpesvirus 6 or 7.

Sequence similarities Belongs to the G-protein coupled receptor 1 family.

Cellular localization Cell membrane.

Images



Anti-CCR7 antibody [E75] (ab32075) at 1/500 dilution + Daudi cell lysate

Predicted band size: 43 kDa

Observed band size: 50 kDa

[why is the actual band size different from the predicted?](#)

Western blot - Anti-CCR7 antibody [E75] (ab32075)

Please note: All products are "FOR RESEARCH USE ONLY. NOT FOR USE IN DIAGNOSTIC PROCEDURES"

Our Abpromise to you: Quality guaranteed and expert technical support

- Replacement or refund for products not performing as stated on the datasheet
- Valid for 12 months from date of delivery
- Response to your inquiry within 24 hours

- We provide support in Chinese, English, French, German, Japanese and Spanish
- Extensive multi-media technical resources to help you
- We investigate all quality concerns to ensure our products perform to the highest standards

If the product does not perform as described on this datasheet, we will offer a refund or replacement. For full details of the Abpromise, please visit <https://www.abcam.com/abpromise> or contact our technical team.

Terms and conditions

- Guarantee only valid for products bought direct from Abcam or one of our authorized distributors