

Product datasheet

Anti-CCRL2 antibody [1B2] ab167114

[1 References](#) [1 Image](#)

Overview

Product name	Anti-CCRL2 antibody [1B2]
Description	Mouse monoclonal [1B2] to CCRL2
Host species	Mouse
Specificity	The specificity of ab167114 was verified by flow cytometry with cells expressing the recombinant protein.
Tested applications	Suitable for: IHC-P
Species reactivity	Reacts with: Human
Immunogen	Other Immunogen Type corresponding to Human CCRL2. Database link: O00421
Positive control	Human placenta tissue.
General notes	This product was previously labelled as CCRL2

Reproducibility is key to advancing scientific discovery and accelerating scientists' next breakthrough.

Abcam is leading the way with our range of recombinant antibodies, knockout-validated antibodies and knockout cell lines, all of which support improved reproducibility.

We are also planning to innovate the way in which we present recommended applications and species on our product datasheets, so that only applications & species that have been tested in our own labs, our suppliers or by selected trusted collaborators are covered by our Abpromise™ guarantee.

In preparation for this, we have started to update the applications & species that this product is Abpromise guaranteed for.

We are also updating the applications & species that this product has been “predicted to work with,” however this information is not covered by our Abpromise guarantee.

Applications & species from publications and Abreviews that have not been tested in our own labs or in those of our suppliers are not covered by the Abpromise guarantee.

Please check that this product meets your needs before purchasing. If you have any questions, special requirements or concerns, please send us an inquiry and/or contact our Support team ahead of purchase. Recommended alternatives for this product can be found below, as well as customer reviews and Q&As.

Properties

Form	Liquid
Storage instructions	Shipped at 4°C. Store at +4°C short term (1-2 weeks). Upon delivery aliquot. Store at -20°C long term.
Storage buffer	pH: 7.20 Preservative: 0.1% KATHON™ CG/ICP Constituents: 99% PBS, 0.5% BSA
Purity	Protein G purified
Clonality	Monoclonal
Clone number	1B2
Isotype	IgG2a
Light chain type	kappa

Applications

Our [Abpromise guarantee](#) covers the use of **ab167114** in the following tested applications.

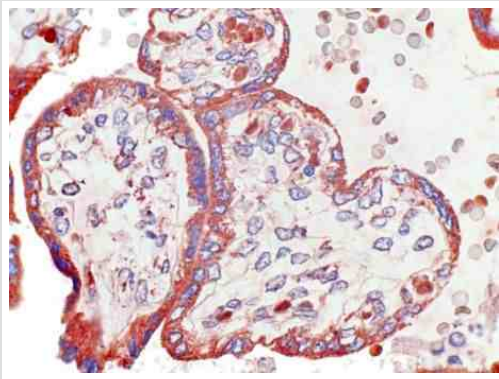
The application notes include recommended starting dilutions; optimal dilutions/concentrations should be determined by the end user.

Application	Abreviews	Notes
IHC-P		Use a concentration of 4 - 8 µg/ml. Perform heat mediated antigen retrieval via the microwave method before commencing with IHC staining protocol.

Target

Function	Receptor for CCL19 and chemerin/RARRES2. Does not appear to be a signaling receptor, but may have a role in modulating chemokine-triggered immune responses by capturing and internalizing CCL19 or by presenting RARRES2 ligand to CMKLR1, a functional signaling receptors. Plays a critical role for the development of Th2 responses.
Tissue specificity	Expressed abundantly in immunal tissues such as spleen, fetal liver, lymph node and bone marrow. Strong expression also in lung and heart. Expressed in almost all hematopoietic cells including monocytes, macrophages, PMNs, T-cells (both CD4+ and CD8+), monocyte-derived iDCs, NK cells, and CD34+ progenitor cells. B cells expressed isoform 1 but not isoform 2. Up-regulated on synovial neutrophils of rheumatoid arthritis patients.
Sequence similarities	Belongs to the G-protein coupled receptor 1 family.
Domain	Lacks the conserved DRYLAV motif in the second intracellular loop that is required for signaling of functional chemokine receptors.
Cellular localization	Cell membrane.

Images



Immunohistochemical analysis of formalin-fixed, paraffin-embedded Human placenta tissue labeling CCRL2 with ab167114 at 8 µg/mL.

Immunohistochemistry (Formalin/PFA-fixed paraffin-embedded sections) - Anti-CCRL2 antibody [1B2] (ab167114)

Please note: All products are "FOR RESEARCH USE ONLY. NOT FOR USE IN DIAGNOSTIC PROCEDURES"

Our Abpromise to you: Quality guaranteed and expert technical support

- Replacement or refund for products not performing as stated on the datasheet
- Valid for 12 months from date of delivery
- Response to your inquiry within 24 hours
- We provide support in Chinese, English, French, German, Japanese and Spanish
- Extensive multi-media technical resources to help you
- We investigate all quality concerns to ensure our products perform to the highest standards

If the product does not perform as described on this datasheet, we will offer a refund or replacement. For full details of the Abpromise, please visit <https://www.abcam.com/abpromise> or contact our technical team.

Terms and conditions

- Guarantee only valid for products bought direct from Abcam or one of our authorized distributors