

Product datasheet

Anti-CD10 antibody [SP67] - BSA and Azide free ab236235

Recombinant RabMAb

5 Images

Overview

Product name	Anti-CD10 antibody [SP67] - BSA and Azide free
Description	Rabbit monoclonal [SP67] to CD10 - BSA and Azide free
Host species	Rabbit
Tested applications	Suitable for: IHC-P, WB, Flow Cyt
Species reactivity	Reacts with: Human Predicted to work with: Mouse, Rat, Chicken, Cow ▲
Immunogen	Synthetic peptide within Human CD10 aa 450-550. The exact sequence is proprietary. Database link: P08473
Positive control	IHC-P: Human renal cell carcinoma tissue. Flow Cyt: Raji cells.
General notes	<p>FOR RESEARCH USE ONLY. For commercial use, please contact partnerships@abcam.com.</p> <p>Ab236235 is the carrier-free version of ab227640. This format is designed for use in antibody labeling, including fluorochromes, metal isotopes, oligonucleotides, enzymes.</p> <p>Our carrier-free formats are supplied in a buffer free of BSA, sodium azide and glycerol for higher conjugation efficiency.</p> <p>Use our conjugation kits for antibody conjugates that are ready-to-use in as little as 20 minutes with <1 minute hands-on-time and 100% antibody recovery: available for fluorescent dyes, HRP, biotin and gold.</p> <p>ab236235 is compatible with the Maxpar® Antibody Labeling Kit from Fluidigm.</p> <p><i>Maxpar® is a trademark of Fluidigm Canada Inc.</i></p> <p>This product is a recombinant monoclonal antibody, which offers several advantages including:</p> <ul style="list-style-type: none"> - High batch-to-batch consistency and reproducibility - Improved sensitivity and specificity - Long-term security of supply - Animal-free production <p>For more information see here.</p> <p>Reproducibility is key to advancing scientific discovery and accelerating scientists' next breakthrough.</p>

Abcam is leading the way with our range of recombinant antibodies, knockout-validated antibodies and knockout cell lines, all of which support improved reproducibility.

We are also planning to innovate the way in which we present recommended applications and species on our product datasheets, so that only applications & species that have been tested in our own labs, our suppliers or by selected trusted collaborators are covered by our Abpromise™ guarantee.

In preparation for this, we have started to update the applications & species that this product is Abpromise guaranteed for.

We are also updating the applications & species that this product has been “predicted to work with,” however this information is not covered by our Abpromise guarantee.

Applications & species from publications and Abreviews that have not been tested in our own labs or in those of our suppliers are not covered by the Abpromise guarantee.

Please check that this product meets your needs before purchasing. If you have any questions, special requirements or concerns, please send us an inquiry and/or contact our Support team ahead of purchase. Recommended alternatives for this product can be found below, as well as customer reviews and Q&As.

Properties

Form	Liquid
Storage instructions	Shipped at 4°C. Store at +4°C. Do Not Freeze.
Storage buffer	pH: 7.20 Constituent: PBS
Carrier free	Yes
Purity	Protein A/G purified
Purification notes	Purified from TCS by protein A/G.
Clonality	Monoclonal
Clone number	SP67
Isotype	IgG

Applications

Our [Abpromise guarantee](#) covers the use of **ab236235** in the following tested applications.

The application notes include recommended starting dilutions; optimal dilutions/concentrations should be determined by the end user.

Application	Abreviews	Notes
IHC-P		Use at an assay dependent concentration. Perform heat mediated antigen retrieval with 1mM EDTA buffer pH 8.0 before commencing with IHC staining protocol.Primary antibody incubation for 30 minutes at room temperature.
WB		Use at an assay dependent concentration. Detects a band of approximately 86 kDa. Primary antibody incubation for 1 hour at room temperature.
Flow Cyt		Use at an assay dependent concentration.

Target

Function

Thermolysin-like specificity, but is almost confined on acting on polypeptides of up to 30 amino acids. Biologically important in the destruction of opioid peptides such as Met- and Leu-enkephalins by cleavage of a Gly-Phe bond. Able to cleave angiotensin-1, angiotensin-2 and angiotensin 1-9. Involved in the degradation of atrial natriuretic factor (ANF). Displays UV-inducible elastase activity toward skin preelastic and elastic fibers.

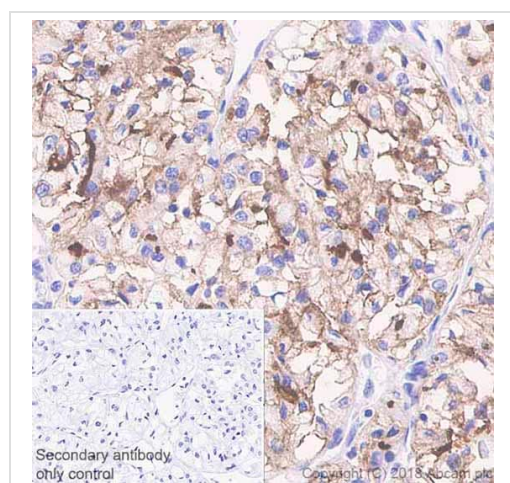
Sequence similarities

Belongs to the peptidase M13 family.

Cellular localization

Cell membrane.

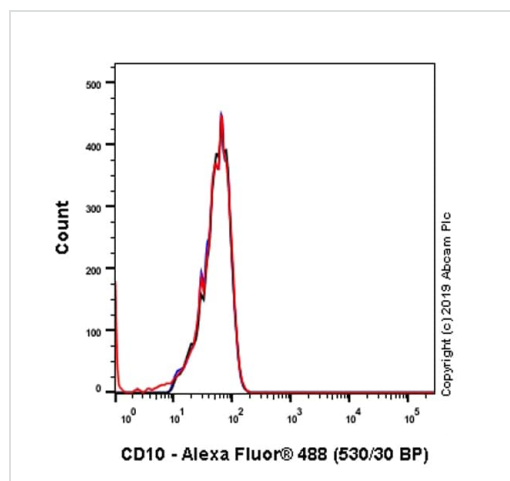
Images



Immunohistochemistry (Formalin/PFA-fixed paraffin-embedded sections) - Anti-CD10 antibody [SP67] - BSA and Azide free (ab236235)

Immunohistochemistry (Formalin/PFA-fixed paraffin-embedded sections) analysis of Human renal cell carcinoma tissue sections labeling CD10 with [ab227640](#) at 1/100 dilution (1.89 µg/ml). Heat mediated antigen retrieval with Tris-EDTA buffer (pH 9.0, epitope retrieval solution 2) for 10mins. Rabbit specific IHC polymer detection kit HRP/DAB ([ab209101](#)) was used as the secondary antibody. Hematoxylin was used as a counterstain. Positive staining on human renal cell carcinoma, performed on a Leica Biosystems BOND™ RX instrument.

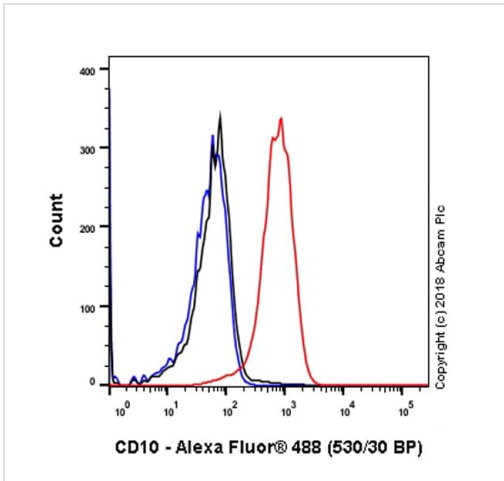
The section was incubated with [ab227640](#) for 30 mins at room temperature. This image was generated using [ab227640](#), the same clone, but with a different buffer formulation.



Flow Cytometry - Anti-CD10 antibody [SP67] - BSA and Azide free (ab236235)

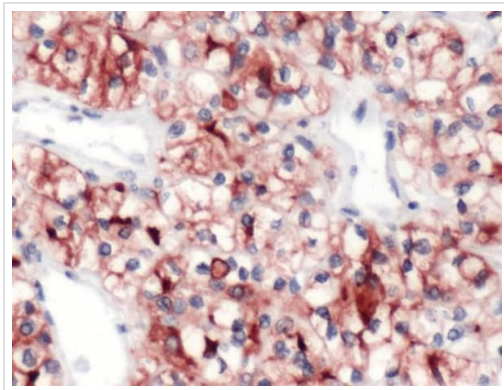
Flow Cytometry analysis of Jurkat(Human T cell leukemia T lymphocyte)_negative control cells labeling CD10 with purified [ab227640](#) at 1:200 dilution (1.025 µg/ml) Red. A Goat anti rabbit IgG (Alexa Fluor® 488, [ab150077](#)) secondary antibody was used at 1:2000 dilution. Isotype control - Rabbit monoclonal IgG ([ab172730](#)) / Black. Unlabeled control - Unlabelled cells / Blue.

This data was developed using the same antibody clone in a different buffer formulation containing PBS, BSA, glycerol, and sodium azide ([ab227642](#)).



Flow Cytometry - Anti-CD10 antibody [SP67] - BSA and Azide free (ab236235)

Flow Cytometry analysis of Raji (Human Burkitt's lymphoma B lymphocyte) cells labeling CD10 with purified [ab227640](#) at 1:200 dilution (1.025 µg/ml) Red. A Goat anti rabbit IgG (Alexa Fluor® 488, [ab150081](#)) secondary antibody was used at 1:2000 dilution. Isotype control - Rabbit monoclonal IgG ([ab172730](#)) / Black. Unlabeled control - Unlabelled cells / Blue. This data was developed using the same antibody clone in a different buffer formulation containing PBS, BSA, glycerol, and sodium azide ([ab227640](#)).







Immunohistochemistry (Formalin/PFA-fixed paraffin-embedded sections) - Anti-CD10 antibody [SP67] - BSA and Azide free (ab236235)

Formalin-fixed, paraffin-embedded human renal cell carcinoma tissue stained for CD10 using [ab227640](#) at 1/100 dilution in immunohistochemical analysis.

This data was developed using the same antibody clone in a different buffer formulation containing PBS, BSA and sodium azide ([ab227640](#)).

Why choose a recombinant antibody?

 <p>Research with confidence Consistent and reproducible results</p>	 <p>Long-term and scalable supply Recombinant technology</p>
 <p>Success from the first experiment Confirmed specificity</p>	 <p>Ethical standards compliant Animal-free production</p>

Anti-CD10 antibody [SP67] - BSA and Azide free (ab236235)

Please note: All products are "FOR RESEARCH USE ONLY. NOT FOR USE IN DIAGNOSTIC PROCEDURES"

Our Abpromise to you: Quality guaranteed and expert technical support

- Replacement or refund for products not performing as stated on the datasheet
- Valid for 12 months from date of delivery
- Response to your inquiry within 24 hours

- We provide support in Chinese, English, French, German, Japanese and Spanish
- Extensive multi-media technical resources to help you
- We investigate all quality concerns to ensure our products perform to the highest standards

If the product does not perform as described on this datasheet, we will offer a refund or replacement. For full details of the Abpromise, please visit <https://www.abcam.com/abpromise> or contact our technical team.

Terms and conditions

- Guarantee only valid for products bought direct from Abcam or one of our authorized distributors