

Product datasheet

Anti-CD105 antibody [105C02] ab44967

KO VALIDATED

★★★★☆ [2 Abreviews](#) [10 References](#) [1 Image](#)

Overview

Product name	Anti-CD105 antibody [105C02]
Description	Mouse monoclonal [105C02] to CD105
Host species	Mouse
Tested applications	Suitable for: WB
Species reactivity	Reacts with: Human
Immunogen	Full length protein corresponding to CD105. Purified GP160 from cell membrane glycoproteins of fresh non-T/non-B acute lymphoblastic leukemia cells.
General notes	<p>The Life Science industry has been in the grips of a reproducibility crisis for a number of years. Abcam is leading the way in addressing this with our range of recombinant monoclonal antibodies and knockout edited cell lines for gold-standard validation. Please check that this product meets your needs before purchasing.</p> <p>If you have any questions, special requirements or concerns, please send us an inquiry and/or contact our Support team ahead of purchase. Recommended alternatives for this product can be found below, along with publications, customer reviews and Q&As</p>

Properties

Form	Liquid
Storage instructions	Shipped at 4°C. Store at +4°C short term (1-2 weeks). Store at -20°C or -80°C. Avoid freeze / thaw cycle.
Storage buffer	pH: 7.40 Preservative: 0.1% Sodium azide Constituent: PBS
Purity	Protein G purified
Clonality	Monoclonal
Clone number	105C02
Isotype	IgG1

Applications

The Abpromise guarantee

Our **Abpromise guarantee** covers the use of ab44967 in the following tested applications.

The application notes include recommended starting dilutions; optimal dilutions/concentrations should be determined by the end user.

Application	Abreviews	Notes
WB		1/1000. Detects a band of approximately 95 kDa.

Target

Function

Major glycoprotein of vascular endothelium. May play a critical role in the binding of endothelial cells to integrins and/or other RGD receptors.

Tissue specificity

Endoglin is restricted to endothelial cells in all tissues except bone marrow.

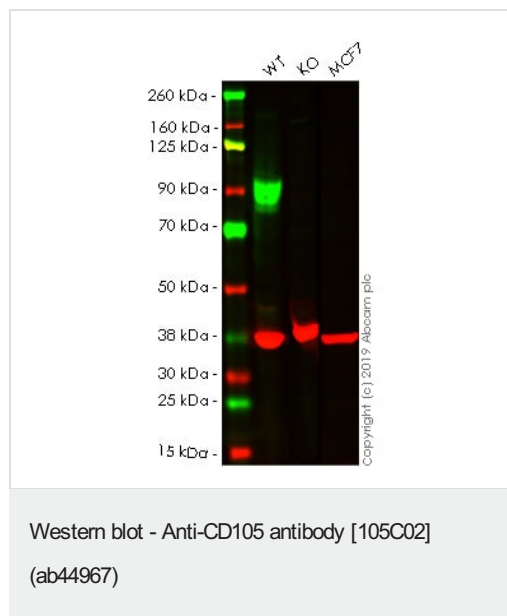
Involvement in disease

Defects in ENG are the cause of hereditary hemorrhagic telangiectasia type 1 (HHT1) [MIM:187300, 108010]; also known as Osler-Rendu-Weber syndrome 1 (ORW1). HHT1 is an autosomal dominant multisystemic vascular dysplasia, characterized by recurrent epistaxis, muco-cutaneous telangiectases, gastro-intestinal hemorrhage, and pulmonary (PAVM), cerebral (CAVM) and hepatic arteriovenous malformations; all secondary manifestations of the underlying vascular dysplasia. Although the first symptom of HHT1 in children is generally nose bleed, there is an important clinical heterogeneity.

Cellular localization

Membrane.

Images



All lanes : Anti-CD105 antibody [105C02] (ab44967) at 1/1000 dilution

Lane 1 : Wild-type HeLa whole cell lysate

Lane 2 : CD105 knockout HeLa whole cell lysate

Lane 3 : MCF7 whole cell lysate

Lysates/proteins at 20 µg per lane.

Observed band size: 95 kDa

Lanes 1 - 3: Merged signal (red and green). Green - ab44967 observed at 95 kDa. Red - loading control, **ab181602**, observed at 37 kDa.

ab44967 was shown to specifically react with CD105 in wild-type HeLa cells as signal was lost in CD105 knockout cells. Wild-type and CD105 knockout samples were subjected to SDS-PAGE. ab44967 and **ab181602** (Rabbit anti GAPDH loading control) were

incubated overnight at 4°C at 1/1000 dilution and 1/20000 dilution respectively. Blots were developed with Goat anti-Mouse IgG H&L (IRDye® 800CW) preabsorbed **ab216772** and Goat anti-Rabbit IgG H&L (IRDye® 680RD) preabsorbed **ab216777** secondary antibodies at 1/20000 dilution for 1 hour at room temperature before imaging.

Please note: All products are "FOR RESEARCH USE ONLY. NOT FOR USE IN DIAGNOSTIC PROCEDURES"

Our Abpromise to you: Quality guaranteed and expert technical support

- Replacement or refund for products not performing as stated on the datasheet
- Valid for 12 months from date of delivery
- Response to your inquiry within 24 hours
- We provide support in Chinese, English, French, German, Japanese and Spanish
- Extensive multi-media technical resources to help you
- We investigate all quality concerns to ensure our products perform to the highest standards

If the product does not perform as described on this datasheet, we will offer a refund or replacement. For full details of the Abpromise, please visit <https://www.abcam.com/abpromise> or contact our technical team.

Terms and conditions

- Guarantee only valid for products bought direct from Abcam or one of our authorized distributors