

Product datasheet

Anti-CD116 antibody [EPR24554-26] ab280951

Recombinant RabMAb

2 Images

Overview

Product name	Anti-CD116 antibody [EPR24554-26]
Description	Rabbit monoclonal [EPR24554-26] to CD116
Host species	Rabbit
Tested applications	Suitable for: Flow Cyt Unsuitable for: ICC,IHC-Fr,IHC-P or WB
Species reactivity	Reacts with: Mouse
Immunogen	Recombinant fragment. This information is proprietary to Abcam and/or its suppliers.
Positive control	Flow Cyt: Mouse blood cells.
General notes	Please Note: Clone [EPR24554-26] (this product) is different to that of [EPR24554-113] (ab280357) for the same target. This product is a recombinant monoclonal antibody, which offers several advantages including: - High batch-to-batch consistency and reproducibility - Improved sensitivity and specificity - Long-term security of supply - Animal-free production For more information see here . Our RabMAb [®] technology is a patented hybridoma-based technology for making rabbit monoclonal antibodies. For details on our patents, please refer to RabMAb[®] patents .

Properties

Form	Liquid
Storage instructions	Shipped at 4°C. Store at +4°C short term (1-2 weeks). Upon delivery aliquot. Store at -20°C long term. Avoid freeze / thaw cycle.
Storage buffer	Preservative: 0.01% Sodium azide Constituents: 59.94% PBS, 40% Glycerol (glycerin, glycerine), 0.05% BSA
Purity	Protein A purified
Clonality	Monoclonal
Clone number	EPR24554-26

Isotype

IgG

Applications

The Abpromise guarantee

Our [Abpromise guarantee](#) covers the use of ab280951 in the following tested applications.

The application notes include recommended starting dilutions; optimal dilutions/concentrations should be determined by the end user.

Application	Abreviews	Notes
Flow Cyt		1/500.

Application notes

Is unsuitable for ICC,IHC-Fr,IHC-P or WB.

Target

Function

Low affinity receptor for granulocyte-macrophage colony-stimulating factor. Transduces a signal that results in the proliferation, differentiation, and functional activation of hematopoietic cells.

Involvement in disease

Defects in CSF2RA are the cause of pulmonary surfactant metabolism dysfunction type 4 (SMDP4) [MIM:300770]. A rare lung disorder due to impaired surfactant homeostasis. It is characterized by alveolar filling with floccular material that stains positive using the periodic acid-Schiff method and is derived from surfactant phospholipids and protein components. Excessive lipoproteins accumulation in the alveoli results in severe respiratory distress.

Sequence similarities

Belongs to the type I cytokine receptor family. Type 5 subfamily.

Domain

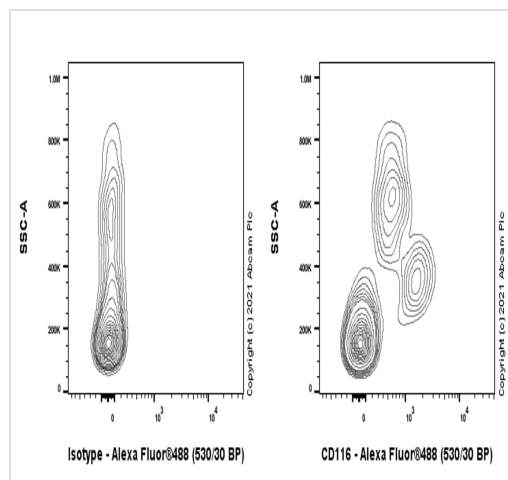
The WSXWS motif appears to be necessary for proper protein folding and thereby efficient intracellular transport and cell-surface receptor binding.

The box 1 motif is required for JAK interaction and/or activation.

Cellular localization

Secreted and Cell membrane.

Images



Flow cytometric analysis of Mouse blood cells cells labelling CD116 with ab280951 at 1/500 dilution (0.1ug) / Right compared with a Rabbit monoclonal IgG ([ab172730](#)) / Left isotype control. Goat anti rabbit IgG (Alexa Fluor® 488, [ab150077](#)) at 1/2000 dilution was used as the secondary antibody. Expression of GMRA is restricted to cells of the myeloid, but not lymphoid (PMID 17694571). Gated on viable cells.

Flow Cytometry - Anti-CD116 antibody [EPR24554-26] (ab280951)

Why choose a recombinant antibody?



Research with confidence
Consistent and reproducible results



Long-term and scalable supply
Recombinant technology



Success from the first experiment
Confirmed specificity



Ethical standards compliant
Animal-free production

Anti-CD116 antibody [EPR24554-26] (ab280951)

Please note: All products are "FOR RESEARCH USE ONLY. NOT FOR USE IN DIAGNOSTIC PROCEDURES"

Our Abpromise to you: Quality guaranteed and expert technical support

- Replacement or refund for products not performing as stated on the datasheet
- Valid for 12 months from date of delivery
- Response to your inquiry within 24 hours
- We provide support in Chinese, English, French, German, Japanese and Spanish
- Extensive multi-media technical resources to help you
- We investigate all quality concerns to ensure our products perform to the highest standards

If the product does not perform as described on this datasheet, we will offer a refund or replacement. For full details of the Abpromise, please visit <https://www.abcam.com/abpromise> or contact our technical team.

Terms and conditions

- Guarantee only valid for products bought direct from Abcam or one of our authorized distributors