

Product datasheet

# Anti-CD11a antibody [hu1124 (Efalizumab)] - Chimeric ab275978

Recombinant

3 Images

Overview

---

<b>Product name</b>	Anti-CD11a antibody [hu1124 (Efalizumab)] - Chimeric
<b>Description</b>	Rabbit monoclonal [hu1124 (Efalizumab)] to CD11a - Chimeric
<b>Host species</b>	Rabbit
<b>Tested applications</b>	<b>Suitable for:</b> Flow Cyt, IHC-P
<b>Species reactivity</b>	<b>Reacts with:</b> Rat, Human
<b>Immunogen</b>	Recombinant fragment corresponding to Human CD11a. Database link: <a href="#">P20701</a>
<b>Positive control</b>	Flow cyt: Human lymphocytes. IHC-P: Rat spleen tissue.
<b>General notes</b>	This chimeric rabbit antibody was made using the variable domain sequences of the original Human IgG1 format, for improved compatibility with existing reagents, assays and techniques.

Properties

---

<b>Form</b>	Liquid
<b>Storage instructions</b>	Shipped at 4°C. Store at +4°C short term (1-2 weeks). Upon delivery aliquot. Store at -20°C. Avoid freeze / thaw cycle.
<b>Storage buffer</b>	Preservative: 0.02% Proclin 300 Constituent: 99.98% PBS
<b>Purity</b>	Protein A purified
<b>Clonality</b>	Monoclonal
<b>Clone number</b>	hu1124 (Efalizumab)
<b>Isotype</b>	IgG
<b>Light chain type</b>	kappa

Applications

---

**The Abpromise guarantee** Our [Abpromise guarantee](#) covers the use of ab275978 in the following tested applications.

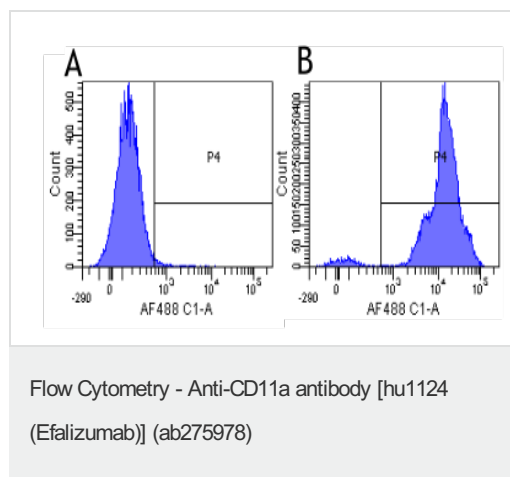
The application notes include recommended starting dilutions; optimal dilutions/concentrations should be determined by the end user.

Application	Abreviews	Notes
Flow Cyt		Use a concentration of 1 µg/ml.
IHC-P		Use a concentration of 3 µg/ml.

## Target

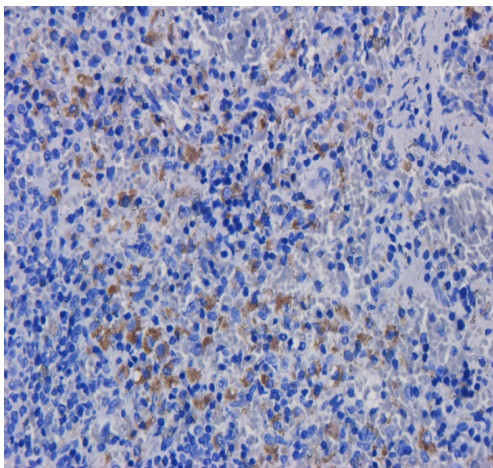
<b>Function</b>	Integrin alpha-L/beta-2 is a receptor for ICAM1, ICAM2, ICAM3 and ICAM4. It is involved in a variety of immune phenomena including leukocyte-endothelial cell interaction, cytotoxic T-cell mediated killing, and antibody dependent killing by granulocytes and monocytes.
<b>Tissue specificity</b>	Leukocytes.
<b>Sequence similarities</b>	Belongs to the integrin alpha chain family. Contains 7 FG-GAP repeats. Contains 1 VWFA domain.
<b>Domain</b>	The integrin I-domain (insert) is a VWFA domain. Integrins with I-domains do not undergo protease cleavage.
<b>Cellular localization</b>	Membrane.

## Images



This data was produced using the human IgG1, kappa version of the antibody.

Flow cytometry of human lymphocytes labeling CD11a with the human IgG1, kappa version of the antibody (panel B) compared with an isotype control (panel A) at 1 µg/ml for 30 mins at RT. After washing, bound antibody was detected using Donkey Anti-Rabbit IgG H&L (Alexa Fluor® 488) ([ab150073](#)) and cells analysed on a FACSCanto flow-cytometer.



Immunohistochemistry (PFA perfusion fixed frozen sections) - Anti-CD11a antibody [hu1124 (Efalizumab)] - Chimeric (ab275978)

This data was produced using the human IgG1, kappa version of the antibody.

Anti-CD11a staining of formaldehyde fixed paraffin embedded rat spleen tissue, at 40x magnification. The human IgG1-chimeric version of the antibody was used to stain samples at a concentration of 3 µg/ml.

### Why choose a recombinant antibody?

 <b>Research with confidence</b> Consistent and reproducible results	 <b>Long-term and scalable supply</b> Recombinant technology
 <b>Success from the first experiment</b> Confirmed specificity	 <b>Ethical standards compliant</b> Animal-free production

Anti-CD11a antibody [hu1124 (Efalizumab)] - Chimeric (ab275978)

**Please note:** All products are "FOR RESEARCH USE ONLY. NOT FOR USE IN DIAGNOSTIC PROCEDURES"

**Our Abpromise to you: Quality guaranteed and expert technical support**

- Replacement or refund for products not performing as stated on the datasheet
- Valid for 12 months from date of delivery
- Response to your inquiry within 24 hours
  
- We provide support in Chinese, English, French, German, Japanese and Spanish
- Extensive multi-media technical resources to help you
- We investigate all quality concerns to ensure our products perform to the highest standards

If the product does not perform as described on this datasheet, we will offer a refund or replacement. For full details of the Abpromise, please visit <https://www.abcam.com/abpromise> or contact our technical team.

### **Terms and conditions**

---

- Guarantee only valid for products bought direct from Abcam or one of our authorized distributors