


Product datasheet

Anti-CD11b antibody [ICRF44] (Allophycocyanin)  
ab218639

1 Image

Overview

<b>Product name</b>	Anti-CD11b antibody [ICRF44] (Allophycocyanin)
<b>Description</b>	Mouse monoclonal [ICRF44] to CD11b (Allophycocyanin)
<b>Host species</b>	Mouse
<b>Conjugation</b>	Allophycocyanin. Ex: 645nm, Em: 660nm
<b>Tested applications</b>	<b>Suitable for:</b> Flow Cyt
<b>Species reactivity</b>	<b>Reacts with:</b> Human <b>Predicted to work with:</b> Pig, Chimpanzee, Baboon, Cynomolgus monkey, Rhesus monkey 
<b>Immunogen</b>	The details of the immunogen for this antibody are not available.
<b>Positive control</b>	Human peripheral blood monocytes.

Properties

<b>Form</b>	Liquid
<b>Storage instructions</b>	Shipped at 4°C. Store at +4°C. Store In the Dark.
<b>Storage buffer</b>	pH: 7.20 Preservative: 0.09% Sodium azide Constituents: 12% Monobasic dihydrogen sodium phosphate, 0.87% Sodium chloride, 0.1% Gelatin
<b>Purity</b>	Affinity purified
<b>Purification notes</b>	Purified from tissue culture supernatant and conjugated under optimal conditions, with unreacted dye removed from the preparation.
<b>Clonality</b>	Monoclonal
<b>Clone number</b>	ICRF44
<b>Isotype</b>	IgG1
<b>Light chain type</b>	kappa

Applications

Our [Abpromise guarantee](#) covers the use of **ab218639** in the following tested applications.

The application notes include recommended starting dilutions; optimal dilutions/concentrations should be determined by the end user.

Application	Abreviews	Notes
Flow Cyt		Use 5µl for 10 <sup>5-8</sup> cells. in a final volume of approximately 100 uL.

## Target

**Function** Integrin alpha-M/beta-2 is implicated in various adhesive interactions of monocytes, macrophages and granulocytes as well as in mediating the uptake of complement-coated particles. It is identical with CR-3, the receptor for the iC3b fragment of the third complement component. It probably recognizes the R-G-D peptide in C3b. Integrin alpha-M/beta-2 is also a receptor for fibrinogen, factor X and ICAM1. It recognizes P1 and P2 peptides of fibrinogen gamma chain.

**Tissue specificity** Predominantly expressed in monocytes and granulocytes.

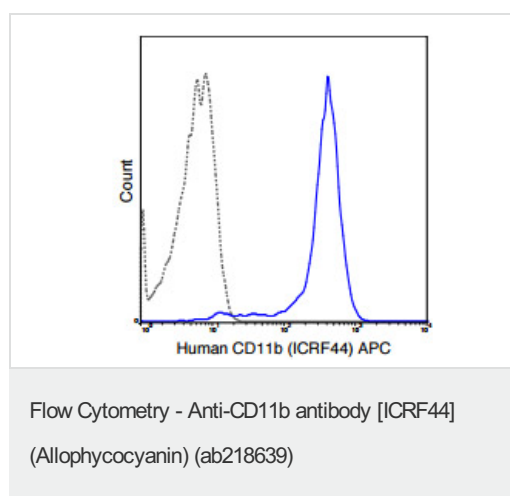
**Involvement in disease** Genetic variations in ITGAM has been associated with susceptibility to systemic lupus erythematosus type 6 (SLEB6) [MIM:609939]. Systemic lupus erythematosus (SLE) is a chronic, inflammatory and often febrile multisystemic disorder of connective tissue. It affects principally the skin, joints, kidneys and serosal membranes. It is thought to represent a failure of the regulatory mechanisms of the autoimmune system.

**Sequence similarities** Belongs to the integrin alpha chain family.  
Contains 7 FG-GAP repeats.  
Contains 1 VWFA domain.

**Domain** The integrin I-domain (insert) is a VWFA domain. Integrins with I-domains do not undergo protease cleavage.

**Cellular localization** Membrane.

## Images



Flow cytometric analysis of Human peripheral blood monocytes labeling CD11b with ab218639 at 5 µL (1 µg) (solid line) or 1 µg Allophycocyanin Mouse IgG1 isotype control (dashed line).

**Please note:** All products are "FOR RESEARCH USE ONLY. NOT FOR USE IN DIAGNOSTIC PROCEDURES"

## **Our Abpromise to you: Quality guaranteed and expert technical support**

---

- Replacement or refund for products not performing as stated on the datasheet
- Valid for 12 months from date of delivery
- Response to your inquiry within 24 hours
  
- We provide support in Chinese, English, French, German, Japanese and Spanish
- Extensive multi-media technical resources to help you
- We investigate all quality concerns to ensure our products perform to the highest standards

If the product does not perform as described on this datasheet, we will offer a refund or replacement. For full details of the Abpromise, please visit <https://www.abcam.com/abpromise> or contact our technical team.

## **Terms and conditions**

---

- Guarantee only valid for products bought direct from Abcam or one of our authorized distributors