

Product datasheet

Anti-CD13 antibody [WM15] (FITC) ab52461

★★★★★ 2 Abreviews 1 References 2 Images

Overview

Product name	Anti-CD13 antibody [WM15] (FITC)
Description	Mouse monoclonal [WM15] to CD13 (FITC)
Host species	Mouse
Conjugation	FITC. Ex: 493nm, Em: 528nm
Tested applications	Suitable for: ICC/IF, Flow Cyt
Species reactivity	Reacts with: Human Predicted to work with: Non human primates
Immunogen	Human AML cells
General notes	<p>Reproducibility is key to advancing scientific discovery and accelerating scientists' next breakthrough.</p> <p>Abcam is leading the way with our range of recombinant antibodies, knockout-validated antibodies and knockout cell lines, all of which support improved reproducibility.</p> <p>We are also planning to innovate the way in which we present recommended applications and species on our product datasheets, so that only applications & species that have been tested in our own labs, our suppliers or by selected trusted collaborators are covered by our Abpromise™ guarantee.</p> <p>In preparation for this, we have started to update the applications & species that this product is Abpromise guaranteed for.</p> <p>We are also updating the applications & species that this product has been “predicted to work with,” however this information is not covered by our Abpromise guarantee.</p> <p>Applications & species from publications and Abreviews that have not been tested in our own labs or in those of our suppliers are not covered by the Abpromise guarantee.</p> <p>Please check that this product meets your needs before purchasing. If you have any questions, special requirements or concerns, please send us an inquiry and/or contact our Support team ahead of purchase. Recommended alternatives for this product can be found below, as well as customer reviews and Q&As.</p>

Properties

Form	Liquid
-------------	--------

Storage instructions	Shipped at 4°C. Store at +4°C.
Storage buffer	pH: 7.4 Preservative: 0.097% Sodium azide Constituents: 0.2% BSA, PBS
Purity	Protein A purified
Purification notes	Prior to conjugation the antibody was purified by protein A affinity chromatography. Following conjugation, it was purified by size exclusion chromatography. Purity >95% by SDS-PAGE.
Clonality	Monoclonal
Clone number	WM15
Isotype	IgG1

Applications

Our [Abpromise guarantee](#) covers the use of **ab52461** in the following tested applications.

The application notes include recommended starting dilutions; optimal dilutions/concentrations should be determined by the end user.

Application	Abreviews	Notes
ICC/IF	★★★★★	Use at an assay dependent concentration.
Flow Cyt		Use 20µl for 10 ⁶ cells. or 100 µl of whole blood. ab91356 - Mouse monoclonal IgG1, is suitable for use as an isotype control with this antibody.

Target

Function	Broad specificity aminopeptidase. Plays a role in the final digestion of peptides generated from hydrolysis of proteins by gastric and pancreatic proteases. May play a critical role in the pathogenesis of cholesterol gallstone disease. May be involved in the metabolism of regulatory peptides of diverse cell types including small intestinal and tubular epithelial cells, macrophages, granulocytes and synaptic membranes from the CNS. Found to cleave antigen peptides bound to major histocompatibility complex class II molecules of presenting cells and to degrade neurotransmitters at synaptic junctions. Is also implicated as a regulator of IL-8 bioavailability in the endometrium, and therefore may contribute to the regulation of angiogenesis. Is used as a marker for acute myeloid leukemia and plays a role in tumor invasion. In case of human coronavirus 229E (HCoV-229E) infection, serves as receptor for HCoV-229E spike glycoprotein. Mediates as well human cytomegalovirus (HCMV) infection.
Tissue specificity	Expressed in epithelial cells of the kidney, intestine, and respiratory tract; granulocytes, monocytes, fibroblasts, endothelial cells, cerebral pericytes at the blood-brain barrier, synaptic membranes of cells in the CNS. Also expressed in endometrial stromal cells, but not in the endometrial glandular cells. Found in the vasculature of tissues that undergo angiogenesis and in malignant gliomas and lymph node metastases from multiple tumor types but not in blood vessels of normal tissues. A soluble form has been found in plasma. It is found to be elevated in plasma and effusions of cancer patients.
Sequence similarities	Belongs to the peptidase M1 family.
Domain	Amino acids 260-353 are essential to mediate susceptibility to infection with HCoV-229E (in

porcine/human chimeric studies) and more specifically amino acids 288-295 (mutagenesis studies).

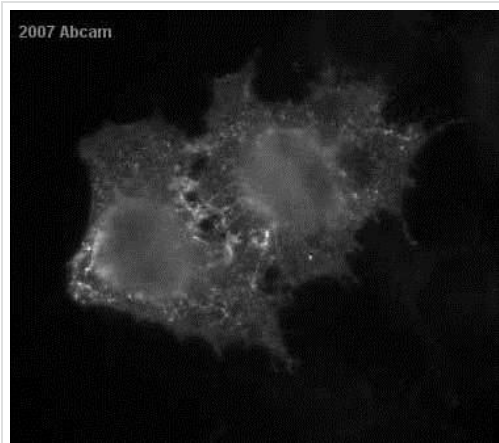
Post-translational modifications

Sulfated.
N- and O-glycosylated.
May undergo proteolysis and give rise to a soluble form.

Cellular localization

Cell membrane. Cytoplasm > cytosol. A soluble form has also been detected.

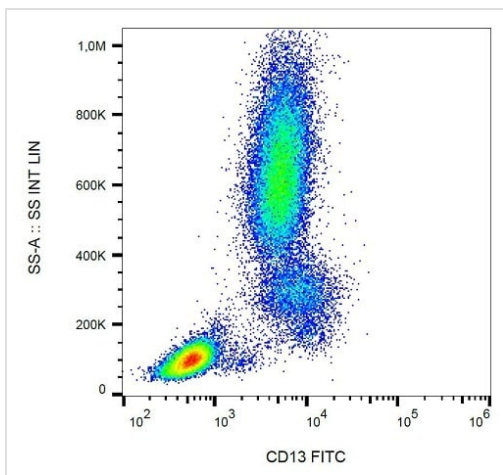
Images



ICC/IF image of ab52461 staining HeLa cells transfected with human CD13 cDNA. The primary antibody was diluted 1/25 and incubated with the sample for 1 hour.

Immunocytochemistry/ Immunofluorescence - Anti-CD13 antibody [WM15] (FITC) (ab52461)

This image is courtesy of an anonymous Abreview



Surface staining of human peripheral blood leukocytes with ab52461.

Flow Cytometry - Anti-CD13 antibody [WM15] (FITC) (ab52461)

Please note: All products are "FOR RESEARCH USE ONLY. NOT FOR USE IN DIAGNOSTIC PROCEDURES"

Our Abpromise to you: Quality guaranteed and expert technical support

- Replacement or refund for products not performing as stated on the datasheet

- Valid for 12 months from date of delivery
- Response to your inquiry within 24 hours

- We provide support in Chinese, English, French, German, Japanese and Spanish
- Extensive multi-media technical resources to help you
- We investigate all quality concerns to ensure our products perform to the highest standards

If the product does not perform as described on this datasheet, we will offer a refund or replacement. For full details of the Abpromise, please visit <https://www.abcam.com/abpromise> or contact our technical team.

Terms and conditions

- Guarantee only valid for products bought direct from Abcam or one of our authorized distributors