



Product datasheet

Anti-CD14 antibody [4B4F12] ab182032

★★★★★ 1 Abreviews 13 References 6 Images

Overview

Product name	Anti-CD14 antibody [4B4F12]
Description	Mouse monoclonal [4B4F12] to CD14
Host species	Mouse
Tested applications	Suitable for: WB, IHC-P, Flow Cyt
Species reactivity	Reacts with: Mouse, Human
Immunogen	Recombinant fragment corresponding to Human CD14 aa 20-214. Expressed in E. coli. Sequence: T TPEPCELDDE DFRCVCNFSE PQPDWSEAFQ CVSAVEVEIH AGGLNLEPFL KRVDADADPR QYADTVKALR VRRLTVGAAQ VPAQLLVGAL RVLAYSRLKE LTLEDLKITG TMPPLPLEAT GLALSSLRLR NVSWATGRSW LAELQQWLKP GLKVLZIAQA HSPAFSCEQV RAFPALTSLD LSDNPGLGER GLMA Database link: P08571 <div style="text-align: right;">  Run BLAST with  Run BLAST with </div>
Positive control	Human CD14 recombinant protein (amino acids 20-214), lysate from HEK293 cells transfected with CD14 (amino acids 20-214)-hlgGfc, HepG2, A549, HL60, mouse RAW264.7, Hela, HEK293 and mouse NIH 3T3 cell lysates. Jurkat cells. Human stomach cancer tissue.

Properties

Form	Liquid
Storage instructions	Shipped at 4°C. Store at +4°C short term (1-2 weeks). Upon delivery aliquot. Store at -20°C long term. Avoid freeze / thaw cycle.
Storage buffer	Preservative: 0.05% Sodium azide Constituent: 99% PBS
Purity	Protein G purified
Purification notes	Purified from tissue culture supernatant.
Clonality	Monoclonal
Clone number	4B4F12

Isotype

IgG1

Applications

Our [Abpromise guarantee](#) covers the use of **ab182032** in the following tested applications.

The application notes include recommended starting dilutions; optimal dilutions/concentrations should be determined by the end user.

Application	Abreviews	Notes
WB		1/500 - 1/2000. Predicted molecular weight: 40 kDa.
IHC-P	★★★★★	1/200 - 1/1000.
Flow Cyt		1/200 - 1/400. ab170190 - Mouse monoclonal IgG1, is suitable for use as an isotype control with this antibody.

Target

Function

Cooperates with MD-2 and TLR4 to mediate the innate immune response to bacterial lipopolysaccharide (LPS). Acts via MyD88, TIRAP and TRAF6, leading to NF-kappa-B activation, cytokine secretion and the inflammatory response. Up-regulates cell surface molecules, including adhesion molecules.

Tissue specificity

Expressed strongly on the surface of monocytes and weakly on the surface of granulocytes; also expressed by most tissue macrophages.

Sequence similarities

Contains 11 LRR (leucine-rich) repeats.

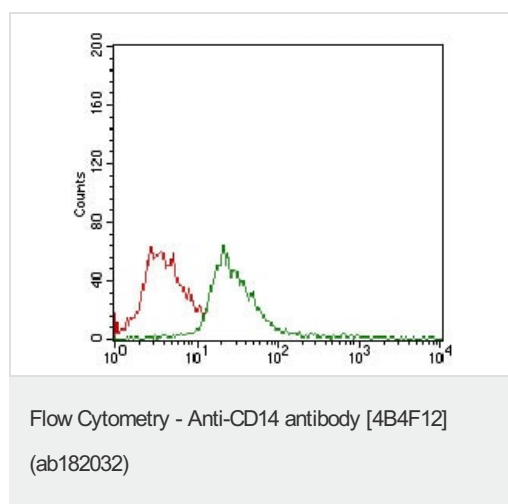
Post-translational modifications

N- and O- glycosylated. O-glycosylated with a core 1 or possibly core 8 glycan.

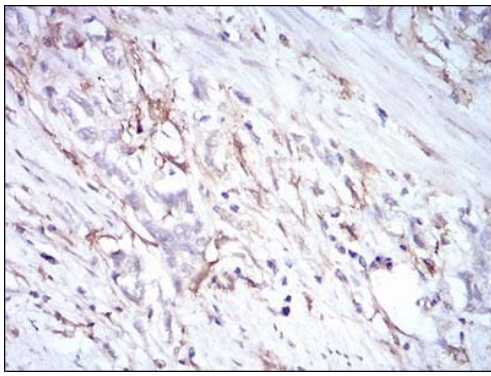
Cellular localization

Cell membrane.

Images

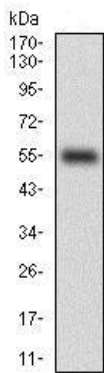


Flow cytometric analysis of Jurkat cells labeling CD14 using ab182032 at 1/200 (green) and a negative control (red).



Immunohistochemistry (Formalin/PFA-fixed paraffin-embedded sections) - Anti-CD14 antibody [4B4F12] (ab182032)

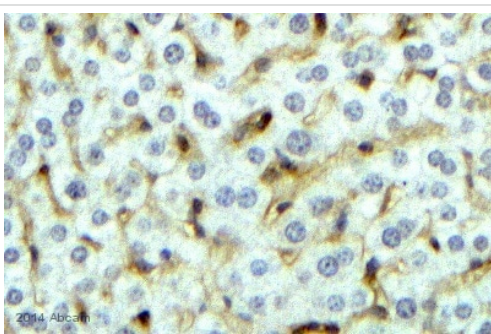
Immunohistochemical analysis of paraffin-embedded, DAB-stained Human stomach cancer tissues labeling CD14 using ab182032 at 1/200.



Western blot - Anti-CD14 antibody [4B4F12] (ab182032)

Anti-CD14 antibody [4B4F12] (ab182032) at 1/500 dilution + Human CD14 recombinant protein (amino acids 20-214)

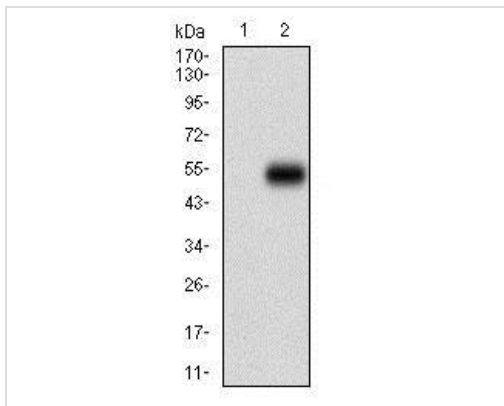
Predicted band size: 40 kDa



Immunohistochemistry (Formalin/PFA-fixed paraffin-embedded sections) - Anti-CD14 antibody [4B4F12] (ab182032)

This image is courtesy of an anonymous abreview.

Immunohistochemistry (Formalin/PFA-fixed paraffin-embedded sections) analysis of mouse liver tissue section labeling CD14 with ab182032. The tissue was fixed with formaldehyde, heat mediated antigen retrieval was performed followed by blocking with 5% serum for 12 hours at 4°C. The tissue was incubated with undiluted Anti-CD14 antibody [4B4F12] (ab182032) for 12 hours at 4°C.



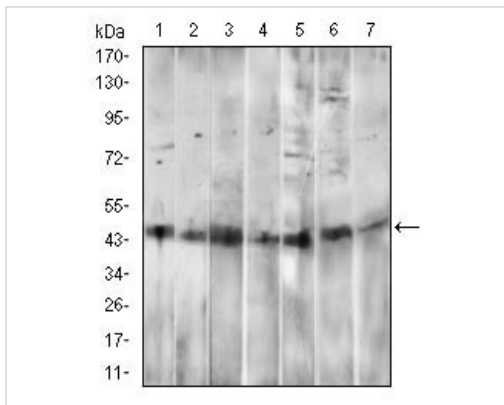
Western blot - Anti-CD14 antibody [4B4F12] (ab182032)

All lanes : Anti-CD14 antibody [4B4F12] (ab182032) at 1/500 dilution

Lane 1 : Lysate from HEK293 cells

Lane 2 : Lysate from HEK293 cells transfected with CD14 (amino acids 20-214)-hlgGfc

Predicted band size: 40 kDa



Western blot - Anti-CD14 antibody [4B4F12] (ab182032)

All lanes : Anti-CD14 antibody [4B4F12] (ab182032) at 1/500 dilution

Lane 1 : HepG2 cell lysate

Lane 2 : A549 cell lysate

Lane 3 : HL60 cell lysate

Lane 4 : mouse RAW264.7 cell lysate

Lane 5 : HeLa cell lysate

Lane 6 : HEK293 cell lysate

Lane 7 : mouse NIH 3T3 cell lysate

Predicted band size: 40 kDa

Please note: All products are "FOR RESEARCH USE ONLY. NOT FOR USE IN DIAGNOSTIC PROCEDURES"

Our Abpromise to you: Quality guaranteed and expert technical support

- Replacement or refund for products not performing as stated on the datasheet
- Valid for 12 months from date of delivery
- Response to your inquiry within 24 hours
- We provide support in Chinese, English, French, German, Japanese and Spanish
- Extensive multi-media technical resources to help you
- We investigate all quality concerns to ensure our products perform to the highest standards

If the product does not perform as described on this datasheet, we will offer a refund or replacement. For full details of the Abpromise, please visit <https://www.abcam.com/abpromise> or contact our technical team.

Terms and conditions

- Guarantee only valid for products bought direct from Abcam or one of our authorized distributors