


Product datasheet

Anti-CD14 antibody [MEM-15] (PE/Cy7<sup>®</sup>) ab234214

1 Image

Overview

<b>Product name</b>	Anti-CD14 antibody [MEM-15] (PE/Cy7 <sup>®</sup> )
<b>Description</b>	Mouse monoclonal [MEM-15] to CD14 (PE/Cy7 <sup>®</sup> )
<b>Host species</b>	Mouse
<b>Conjugation</b>	PE/Cy7 <sup>®</sup> . Ex: 496nm, Em: 774nm
<b>Tested applications</b>	<b>Suitable for:</b> Flow Cyt
<b>Species reactivity</b>	<b>Reacts with:</b> Human <b>Predicted to work with:</b> Non human primates 
<b>Immunogen</b>	Other Immunogen Type corresponding to Human CD14. A crude mixture of human urinary proteins precipitated by ammonium sulphate from the urine of a patient suffering from proteinuria.
<b>Positive control</b>	Flow Cytometry: Human peripheral blood cells.
<b>General notes</b>	This product or portions thereof is manufactured under license from Carnegie Mellon University under U.S. Patent Number 5, 268, 486 and related patents. Cy and CyDye are trademarks of GE Healthcare Limited.

Properties

<b>Form</b>	Liquid
<b>Storage instructions</b>	Shipped at 4°C. Store at +4°C. Store In the Dark.
<b>Storage buffer</b>	Preservative: 0.0975% Sodium azide Constituent: PBS
<b>Purity</b>	Size exclusion
<b>Purification notes</b>	ab234214 is conjugated with tandem dye PE-Cy <sup>™</sup> 7 under optimum conditions. The conjugate is purified by size-exclusion chromatography and adjusted for direct use. No reconstitution is necessary.
<b>Clonality</b>	Monoclonal
<b>Clone number</b>	MEM-15
<b>Isotype</b>	IgG1

Applications

Our [Abpromise guarantee](#) covers the use of **ab234214** in the following tested applications.

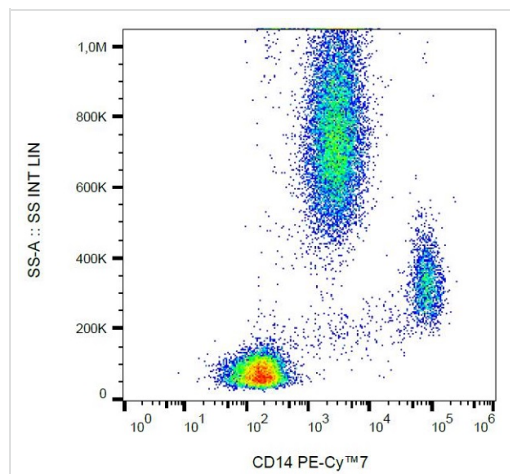
The application notes include recommended starting dilutions; optimal dilutions/concentrations should be determined by the end user.

Application	Abreviews	Notes
Flow Cyt		Use 4µl for 10 <sup>6</sup> cells. (or 100 µL whole blood)

## Target

<b>Function</b>	Cooperates with MD-2 and TLR4 to mediate the innate immune response to bacterial lipopolysaccharide (LPS). Acts via MyD88, TIRAP and TRAF6, leading to NF-kappa-B activation, cytokine secretion and the inflammatory response. Up-regulates cell surface molecules, including adhesion molecules.
<b>Tissue specificity</b>	Expressed strongly on the surface of monocytes and weakly on the surface of granulocytes; also expressed by most tissue macrophages.
<b>Sequence similarities</b>	Contains 11 LRR (leucine-rich) repeats.
<b>Post-translational modifications</b>	N- and O- glycosylated. O-glycosylated with a core 1 or possibly core 8 glycan.
<b>Cellular localization</b>	Cell membrane.

## Images



Flow Cytometry analysis of human peripheral blood cells labeling CD14 with ab234214. Surface staining. Leukocyte gate.

Flow Cytometry - Anti-CD14 antibody [MEM-15]  
(PE/Cy7 ®) (ab234214)

**Please note:** All products are "FOR RESEARCH USE ONLY. NOT FOR USE IN DIAGNOSTIC PROCEDURES"

## Our Abpromise to you: Quality guaranteed and expert technical support

- Replacement or refund for products not performing as stated on the datasheet

- Valid for 12 months from date of delivery
- Response to your inquiry within 24 hours
  
- We provide support in Chinese, English, French, German, Japanese and Spanish
- Extensive multi-media technical resources to help you
- We investigate all quality concerns to ensure our products perform to the highest standards

If the product does not perform as described on this datasheet, we will offer a refund or replacement. For full details of the Abpromise, please visit <https://www.abcam.com/abpromise> or contact our technical team.

### **Terms and conditions**

---

- Guarantee only valid for products bought direct from Abcam or one of our authorized distributors