

Product datasheet

Anti-CD14 antibody [MEM-15], prediluted (Allophycocyanin/Cy7 ®) ab194805

1 Image

Overview

Product name	Anti-CD14 antibody [MEM-15], prediluted (Allophycocyanin/Cy7 ®)
Description	Mouse monoclonal [MEM-15] to CD14, prediluted (Allophycocyanin/Cy7 ®)
Host species	Mouse
Conjugation	Allophycocyanin/Cy7 ®. Ex: 650nm, Em: 774nm
Tested applications	Suitable for: Flow Cyt
Species reactivity	Reacts with: Human, Non human primates
Immunogen	Other Immunogen Type corresponding to Human CD14. (A crude mixture of human urinary proteins precipitated by ammonium sulphate from the urine of a patient suffering from proteinuria.)

Properties

Form	Prediluted
Storage instructions	Shipped at 4°C. Store at +4°C. Store In the Dark.
Storage buffer	Preservative: 0.097% Sodium azide Constituents: 99% PBS, 0.2% BSA
Purity	Size exclusion
Purification notes	Purified antibody is conjugated with tandem dye Allophycocyanin/Cy7 ® under optimum conditions. The conjugate is purified by size-exclusion chromatography and adjusted for direct use. No reconstitution is necessary.
Clonality	Monoclonal
Clone number	MEM-15
Isotype	IgG1

Applications

Our [Abpromise guarantee](#) covers the use of **ab194805** in the following tested applications.

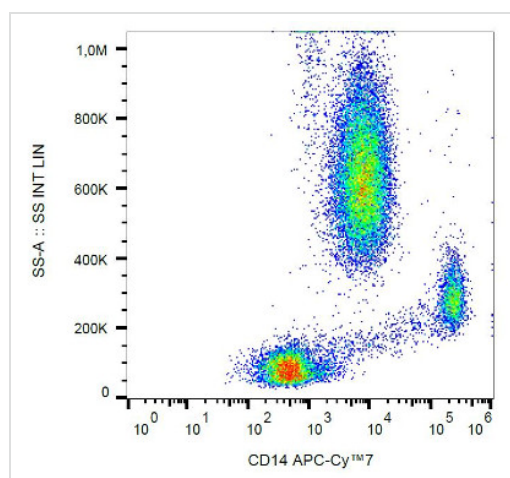
The application notes include recommended starting dilutions; optimal dilutions/concentrations should be determined by the end user.

Application	Abreviews	Notes
Flow Cyt		Use 4µl for 10 ⁶ cells. (or 100 µl of whole blood).

Target

Function	Cooperates with MD-2 and TLR4 to mediate the innate immune response to bacterial lipopolysaccharide (LPS). Acts via MyD88, TIRAP and TRAF6, leading to NF-kappa-B activation, cytokine secretion and the inflammatory response. Up-regulates cell surface molecules, including adhesion molecules.
Tissue specificity	Expressed strongly on the surface of monocytes and weakly on the surface of granulocytes; also expressed by most tissue macrophages.
Sequence similarities	Contains 11 LRR (leucine-rich) repeats.
Post-translational modifications	N- and O- glycosylated. O-glycosylated with a core 1 or possibly core 8 glycan.
Cellular localization	Cell membrane.

Images



Flow Cytometry analysis of Human peripheral blood cells labeling CD14 with Anti-CD14 antibody [MEM-15], prediluted (Allophycocyanin/Cy7 ®) (ab194805).

Flow Cytometry - Anti-CD14 antibody [MEM-15], prediluted (Allophycocyanin/Cy7 ®) (ab194805)

Please note: All products are "FOR RESEARCH USE ONLY. NOT FOR USE IN DIAGNOSTIC PROCEDURES"

Our Promise to you: Quality guaranteed and expert technical support

- Replacement or refund for products not performing as stated on the datasheet
- Valid for 12 months from date of delivery
- Response to your inquiry within 24 hours

- We provide support in Chinese, English, French, German, Japanese and Spanish
- Extensive multi-media technical resources to help you
- We investigate all quality concerns to ensure our products perform to the highest standards

If the product does not perform as described on this datasheet, we will offer a refund or replacement. For full details of the Abpromise, please visit <https://www.abcam.com/abpromise> or contact our technical team.

Terms and conditions

- Guarantee only valid for products bought direct from Abcam or one of our authorized distributors