

Product datasheet

Anti-CD147 antibody [MEM-M6/2] ab21903

★★★★★ 1 Abreviews 1 Image

Overview

Product name	Anti-CD147 antibody [MEM-M6/2]
Description	Mouse monoclonal [MEM-M6/2] to CD147
Host species	Mouse
Tested applications	Suitable for: Flow Cyt, IHC-P
Species reactivity	Reacts with: Human, Pig
Immunogen	A soluble recombinant form of CD147, CD147Rg, which consists of the cDNA coding for the entire extracellular region of CD147 fused to the DNA coding for the hinge region, CH2 and CH3 domain of human IgG1.
Epitope	This antibody recognises extracellular Ig domain D1 of CD147 antigen.
Positive control	This antibody gave a positive result in IHC in the following FFPE tissue: Human Testis.
General notes	This product was changed from ascites to tissue culture supernatant. Please note that the dilutions may need to be adjusted accordingly. If you have any questions, please do not hesitate to contact our scientific support team.

Properties

Form	Liquid
Storage instructions	Shipped at 4°C. Store at +4°C short term (1-2 weeks). Upon delivery aliquot. Store at -20°C or -80°C. Avoid freeze / thaw cycle.
Storage buffer	pH: 7.40 Preservative: 0.097% Sodium azide Constituent: PBS
Purity	Protein A purified
Purification notes	> 95% (by SDS-PAGE). Purified from TCS
Clonality	Monoclonal
Clone number	MEM-M6/2
Isotype	IgG2b

Applications

Our [Abpromise guarantee](#) covers the use of **ab21903** in the following tested applications.

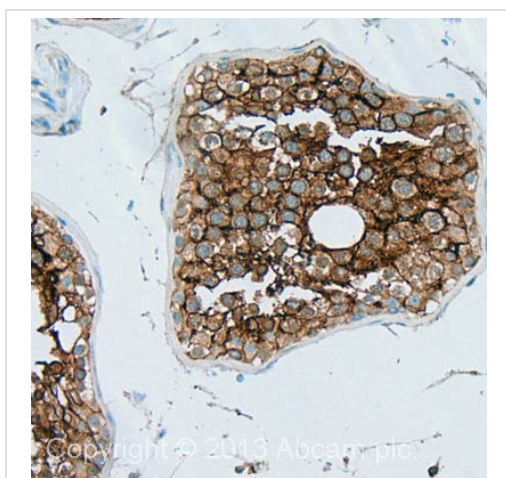
The application notes include recommended starting dilutions; optimal dilutions/concentrations should be determined by the end user.

Application	Abreviews	Notes
Flow Cyt		Use a concentration of 4 µg/ml. ab170192 - Mouse monoclonal IgG2b, is suitable for use as an isotype control with this antibody.
IHC-P		Use a concentration of 0.1 µg/ml. Perform heat mediated antigen retrieval with citrate buffer pH 6 before commencing with IHC staining protocol.

Target

Function	Plays pivotal roles in spermatogenesis, embryo implantation, neural network formation and tumor progression. Stimulates adjacent fibroblasts to produce matrix metalloproteinases (MMPS). May target monocarboxylate transporters SLC16A1, SLC16A3 and SLC16A8 to plasma membranes of retinal pigment epithelium and neural retina. Seems to be a receptor for oligomannosidic glycans. In vitro, promotes outgrowth of astrocytic processes.
Tissue specificity	Present only in vascular endothelium in non-neoplastic regions of the brain, whereas it is present in tumor cells but not in proliferating blood vessels in malignant gliomas.
Sequence similarities	Contains 1 Ig-like C2-type (immunoglobulin-like) domain. Contains 1 Ig-like V-type (immunoglobulin-like) domain.
Post-translational modifications	N-glycosylated.
Cellular localization	Cell membrane. Melanosome. Colocalizes with SLC16A1 and SLC16A8 (By similarity). Identified by mass spectrometry in melanosome fractions from stage I to stage IV.

Images



Immunohistochemistry (Formalin/PFA-fixed paraffin-embedded sections) - Anti-CD147 antibody [MEM-M6/2] (ab21903)

IHC image of CD147 staining in Human Testis formalin fixed paraffin embedded tissue section, performed on a Leica Bond™ system using the standard protocol F. The section was pre-treated using heat mediated antigen retrieval with sodium citrate buffer (pH6, epitope retrieval solution 1) for 20 mins. The section was then incubated with ab21903, 0.1 µg/ml, for 15 mins at room temperature and detected using an HRP conjugated compact polymer system. DAB was used as the chromogen. The section was then counterstained with haematoxylin and mounted with DPX.

For other IHC staining systems (automated and non-automated) customers should optimize variable parameters such as antigen retrieval conditions, primary antibody concentration and antibody incubation times.

Please note: All products are "FOR RESEARCH USE ONLY AND ARE NOT INTENDED FOR DIAGNOSTIC OR THERAPEUTIC USE"

Our Abpromise to you: Quality guaranteed and expert technical support

- Replacement or refund for products not performing as stated on the datasheet
- Valid for 12 months from date of delivery
- Response to your inquiry within 24 hours
- We provide support in Chinese, English, French, German, Japanese and Spanish
- Extensive multi-media technical resources to help you
- We investigate all quality concerns to ensure our products perform to the highest standards

If the product does not perform as described on this datasheet, we will offer a refund or replacement. For full details of the Abpromise, please visit <https://www.abcam.com/abpromise> or contact our technical team.

Terms and conditions

- Guarantee only valid for products bought direct from Abcam or one of our authorized distributors