

Product datasheet

Anti-CD16 antibody [SP175] ab183354

Recombinant RabMAb

★★★★★ 1 Abreviews 3 References 13 Images

Overview

Product name	Anti-CD16 antibody [SP175]
Description	Rabbit monoclonal [SP175] to CD16
Host species	Rabbit
Tested applications	Suitable for: Flow Cyt, IHC-P
Species reactivity	Reacts with: Human
Immunogen	Synthetic peptide. This information is proprietary to Abcam and/or its suppliers.
Positive control	IHC-P: Human lung, thymus, B cell lymphoma, uterus, spleen, placenta, liver, liver hepatocellular carcinoma, lung adenocarcinoma, pancreatic adenocarcinoma and HK lymphoma tissues. Flow Cyt: Jurkat cells.
General notes	<p>This product is a recombinant monoclonal antibody, which offers several advantages including:</p> <ul style="list-style-type: none"> - High batch-to-batch consistency and reproducibility - Improved sensitivity and specificity - Long-term security of supply - Animal-free production <p>For more information see here.</p> <p>This product is FOR RESEARCH USE ONLY. For commercial use, please contact partnerships@abcam.com.</p>

Properties

Form	Liquid
Storage instructions	Shipped at 4°C. Store at +4°C short term (1-2 weeks). Upon delivery aliquot. Store at -20°C long term. Avoid freeze / thaw cycle.
Storage buffer	pH: 7.20 Preservative: 0.1% Sodium azide Constituents: PBS, 1% BSA
Purity	Protein A/G purified
Purification notes	Purified from TCS by protein A/G.
Clonality	Monoclonal

Clone number SP175
Isotype IgG

Applications

The Abpromise guarantee Our [Abpromise guarantee](#) covers the use of ab183354 in the following tested applications. The application notes include recommended starting dilutions; optimal dilutions/concentrations should be determined by the end user.

Application	Abreviews	Notes
Flow Cyt		1/100. ab172730 - Rabbit monoclonal IgG, is suitable for use as an isotype control with this antibody.
IHC-P	★★★★★ (1)	1/100. Antigen retrieval: Boil tissue section in EDTA buffer, pH 8.0 for 10 min followed by cooling at room temperature for 20 min.

Target

Function Receptor for the Fc region of IgG. Binds complexed or aggregated IgG and also monomeric IgG. Mediates antibody-dependent cellular cytotoxicity (ADCC) and other antibody-dependent responses, such as phagocytosis.

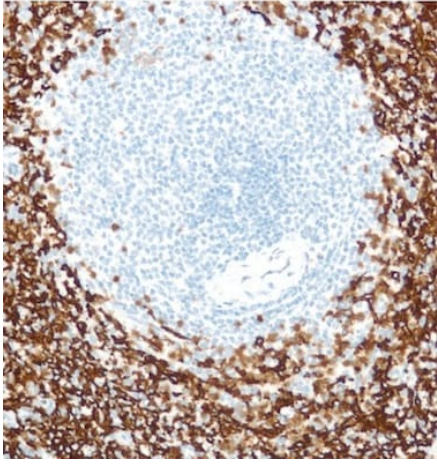
Tissue specificity Expressed on natural killer cells, macrophages, subpopulation of T-cells, immature thymocytes and placental trophoblasts.

Sequence similarities Contains 2 Ig-like C2-type (immunoglobulin-like) domains.

Post-translational modifications Glycosylated. Contains high mannose- and complex-type oligosaccharides. The soluble form is produced by a proteolytic cleavage.

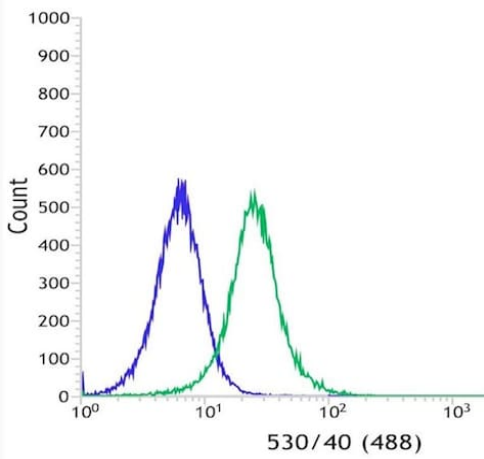
Cellular localization Cell membrane. Secreted. Exists also as a soluble receptor.

Images



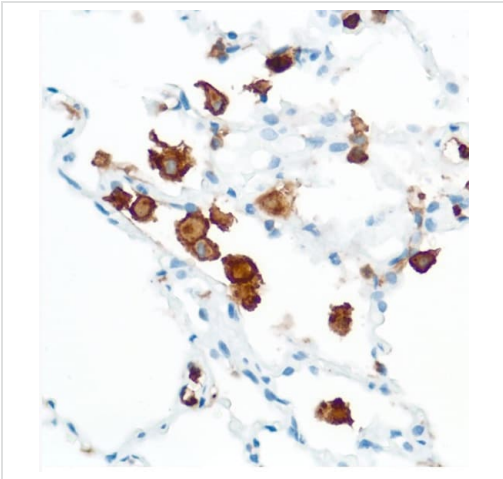
Immunohistochemical analysis of paraffin embedded human spleen tissue labeling CD16 with ab183354 at 1/100 dilution.

Immunohistochemistry (Formalin/PFA-fixed paraffin-embedded sections) - Anti-CD16 antibody [SP175] (ab183354)



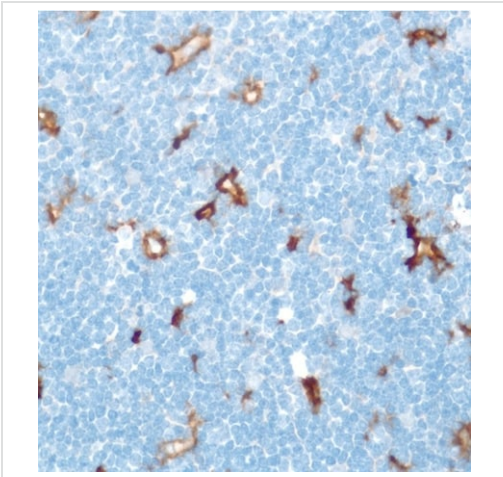
Flow cytometric analysis of Jurkat cells (Human T cell leukemia cell line from peripheral blood) labeling CD16 with ab183354 at a 1/100 dilution (green) compared to a negative control Rabbit IgG (blue).

Flow Cytometry - Anti-CD16 antibody [SP175] (ab183354)



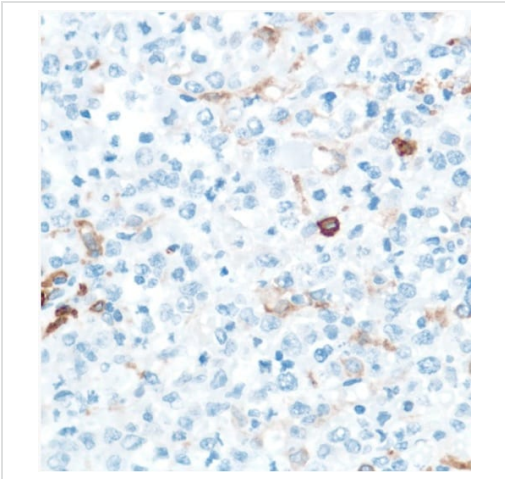
Immunohistochemical analysis of paraffin embedded human lung tissue labeling CD16 with ab183354 at 1/100 dilution.

Immunohistochemistry (Formalin/PFA-fixed paraffin-embedded sections) - Anti-CD16 antibody [SP175] (ab183354)



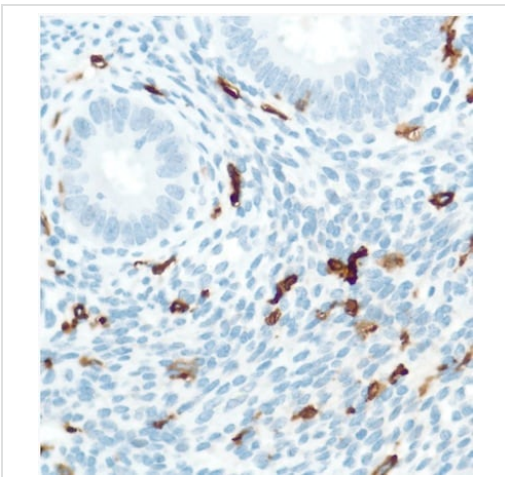
Immunohistochemical analysis of paraffin embedded human thymus tissue labeling CD16 with ab183354 at 1/100 dilution.

Immunohistochemistry (Formalin/PFA-fixed paraffin-embedded sections) - Anti-CD16 antibody [SP175] (ab183354)



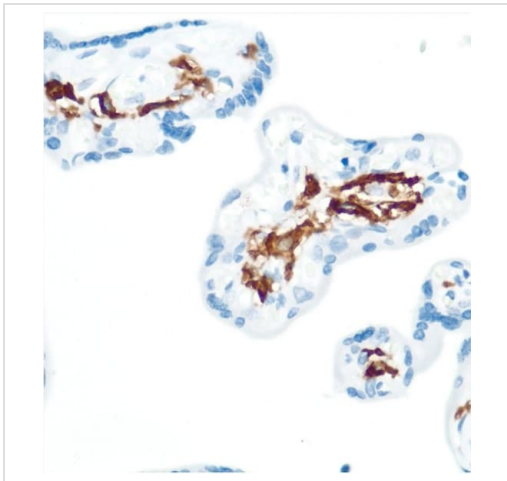
Immunohistochemical analysis of paraffin embedded human B cell lymphoma tissue labeling CD16 with ab183354 at 1/100 dilution.

Immunohistochemistry (Formalin/PFA-fixed paraffin-embedded sections) - Anti-CD16 antibody [SP175] (ab183354)



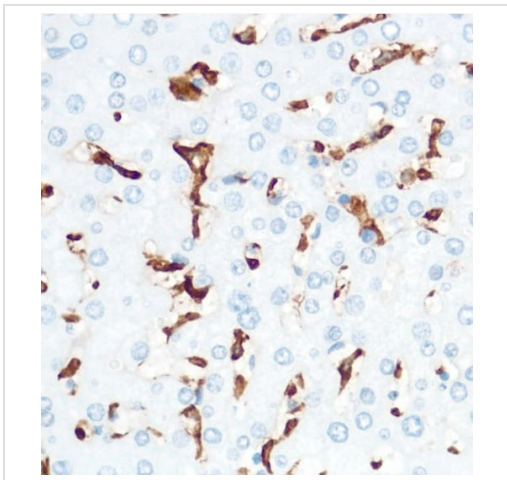
Immunohistochemical analysis of paraffin embedded human uterus tissue labeling CD16 with ab183354 at 1/100 dilution.

Immunohistochemistry (Formalin/PFA-fixed paraffin-embedded sections) - Anti-CD16 antibody [SP175] (ab183354)



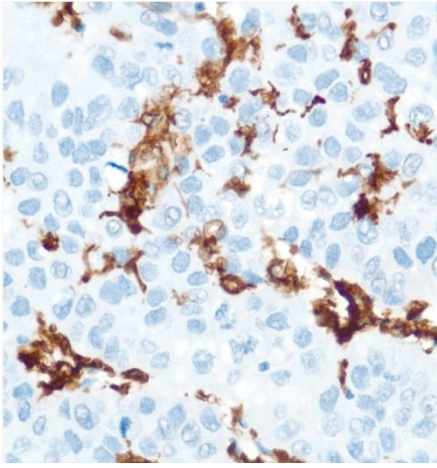
Immunohistochemical analysis of paraffin embedded human placenta tissue labeling CD16 with ab183354 at 1/100 dilution.

Immunohistochemistry (Formalin/PFA-fixed paraffin-embedded sections) - Anti-CD16 antibody [SP175] (ab183354)



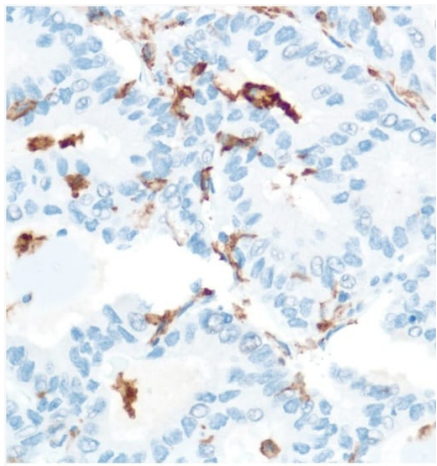
Immunohistochemical analysis of paraffin embedded human liver tissue labeling CD16 with ab183354 at 1/100 dilution.

Immunohistochemistry (Formalin/PFA-fixed paraffin-embedded sections) - Anti-CD16 antibody [SP175] (ab183354)



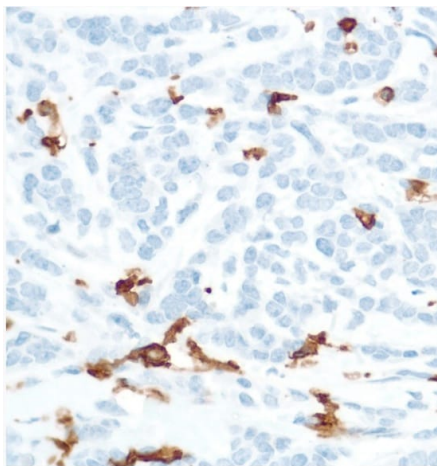
Immunohistochemical analysis of paraffin embedded human liver hepatocellular carcinoma tissue labeling CD16 with ab183354 at 1/100 dilution.

Immunohistochemistry (Formalin/PFA-fixed paraffin-embedded sections) - Anti-CD16 antibody [SP175] (ab183354)



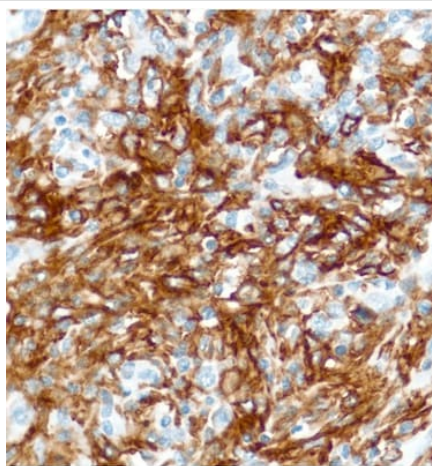
Immunohistochemical analysis of paraffin embedded human lung adenocarcinoma tissue labeling CD16 with ab183354 at 1/100 dilution.

Immunohistochemistry (Formalin/PFA-fixed paraffin-embedded sections) - Anti-CD16 antibody [SP175] (ab183354)



Immunohistochemical analysis of paraffin embedded human pancreatic adenocarcinoma tissue labeling CD16 with ab183354 at 1/100 dilution.

Immunohistochemistry (Formalin/PFA-fixed paraffin-embedded sections) - Anti-CD16 antibody [SP175] (ab183354)



Immunohistochemical analysis of paraffin embedded human HK lymphoma tissue labeling CD16 with ab183354 at 1/100 dilution.

Immunohistochemistry (Formalin/PFA-fixed paraffin-embedded sections) - Anti-CD16 antibody [SP175] (ab183354)

Why choose a recombinant antibody?



Research with confidence
Consistent and reproducible results



Long-term and scalable supply
Recombinant technology



Success from the first experiment
Confirmed specificity



Ethical standards compliant
Animal-free production

Anti-CD16 antibody [SP175] (ab183354)

Please note: All products are "FOR RESEARCH USE ONLY. NOT FOR USE IN DIAGNOSTIC PROCEDURES"

Our Abpromise to you: Quality guaranteed and expert technical support

- Replacement or refund for products not performing as stated on the datasheet
- Valid for 12 months from date of delivery
- Response to your inquiry within 24 hours
- We provide support in Chinese, English, French, German, Japanese and Spanish
- Extensive multi-media technical resources to help you
- We investigate all quality concerns to ensure our products perform to the highest standards

If the product does not perform as described on this datasheet, we will offer a refund or replacement. For full details of the Abpromise, please visit <https://www.abcam.com/abpromise> or contact our technical team.

Terms and conditions

- Guarantee only valid for products bought direct from Abcam or one of our authorized distributors