

Product datasheet

Anti-CD161 antibody [PK136] (Biotin) ab22516

1 Image

Overview

Product name	Anti-CD161 antibody [PK136] (Biotin)
Description	Mouse monoclonal [PK136] to CD161 (Biotin)
Host species	Mouse
Conjugation	Biotin
Specificity	This antibody recognises CD161c, and may also react with CD161b. CD161c expression itself is strain specific in mice, but recognition of CD161b by ab22516 appears to be even more complex, as only some CD161b positive strains are labelled by the antibody. Ab22516 is useful for the identification of NK cells in selected strains of mice (positive on C57BL, FVB/N and NZB, but negative on AKR and BALB/c) and is also expressed by rare subsets of T cells and monocytes.
Tested applications	Suitable for: Functional Studies, Flow Cyt
Species reactivity	Reacts with: Mouse Does not react with: Rat, Human
Immunogen	Tissue/ cell preparation (Mouse): Spleen and bone marrow cells from CE mice

Properties

Form	Liquid
Storage instructions	Shipped at 4°C. Store at +4°C short term (1-2 weeks). Store at +4°C. Do Not Freeze.
Storage buffer	pH: 7.2 Preservative: 0.09% Sodium azide Constituents: 0.14% Monobasic dihydrogen sodium phosphate, 0.87% Sodium chloride, 0.1% Gelatin
Purity	Affinity purified
Purification notes	This antibody was been purified by affinity chromatography, from tissue culture supernatant.
Clonality	Monoclonal
Clone number	PK136
Myeloma	Sp2/0-Ag14
Isotype	IgG2a

Applications

Our [Abpromise guarantee](#) covers the use of **ab22516** in the following tested applications.

The application notes include recommended starting dilutions; optimal dilutions/concentrations should be determined by the end user.

Application	Abreviews	Notes
Functional Studies		Use at an assay dependent concentration. In vivo depletion of NK cells and in vitro activation of NK cells.
Flow Cyt		Use at an assay dependent concentration. ab97679 - Mouse monoclonal IgG2a, is suitable for use as an isotype control with this antibody.

Target

Function

Plays an inhibitory role on natural killer (NK) cells cytotoxicity. Activation results in specific acid sphingomyelinase/SMPD1 stimulation with subsequent marked elevation of intracellular ceramide. Activation also leads to AKT1/PKB and RPS6KA1/RSK1 kinases stimulation as well as markedly enhanced T-cell proliferation induced by anti-CD3. Acts as a lectin that binds to the terminal carbohydrate Gal-alpha(1,3)Gal epitope as well as to the N-acetyllactosamine epitope. Binds also to CLEC2D/LLT1 as a ligand and inhibits NK cell-mediated cytotoxicity as well as interferon-gamma secretion in target cells.

Tissue specificity

Expressed in a subset of NK cells predominantly in intestinal epithelium and liver. Detected in peripheral blood T-cells and preferentially in adult T-cells with a memory antigenic phenotype.

Sequence similarities

Contains 1 C-type lectin domain.

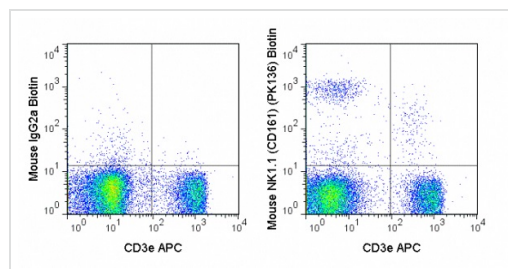
Post-translational modifications

N-glycosylated. Contains sialic acid residues.

Cellular localization

Membrane.

Images



Flow cytometry of C57Bl/6 splenocytes labeling CD161 and CD3e with ab22516 at 0.25µg (right panel) or Mouse IgG2a isotype control at 0.25µg (left panel)

Flow Cytometry - Anti-CD161 antibody [PK136]
(Biotin) (ab22516)

Please note: All products are "FOR RESEARCH USE ONLY AND ARE NOT INTENDED FOR DIAGNOSTIC OR THERAPEUTIC USE"

Our Abpromise to you: Quality guaranteed and expert technical support

- Replacement or refund for products not performing as stated on the datasheet
- Valid for 12 months from date of delivery
- Response to your inquiry within 24 hours

- We provide support in Chinese, English, French, German, Japanese and Spanish
- Extensive multi-media technical resources to help you
- We investigate all quality concerns to ensure our products perform to the highest standards

If the product does not perform as described on this datasheet, we will offer a refund or replacement. For full details of the Abpromise, please visit <https://www.abcam.com/abpromise> or contact our technical team.

Terms and conditions

- Guarantee only valid for products bought direct from Abcam or one of our authorized distributors