

## Product datasheet

# Anti-CD16a antibody [SP189] - C-terminal ab227665

Recombinant **RabMAb**

16 Images

### Overview

<b>Product name</b>	Anti-CD16a antibody [SP189] - C-terminal
<b>Description</b>	Rabbit monoclonal [SP189] to CD16a - C-terminal
<b>Host species</b>	Rabbit
<b>Tested applications</b>	<b>Suitable for:</b> WB, IHC-P, Flow Cyt
<b>Species reactivity</b>	<b>Reacts with:</b> Human
<b>Immunogen</b>	Synthetic peptide within Human CD16a aa 200 to the C-terminus (C terminal). The exact sequence is proprietary. Database link: <a href="#">P08637</a>
<b>Positive control</b>	IHC-P: Human lung, liver, thymus, spleen, placenta, B-cell lymphoma, cervical squamous cell carcinoma, colon carcinoma, HK lymphoma, stomach carcinoma, and liver hepatocellular carcinoma tissue; WB: K562 cell lysate; Flow Cyt: Jurkat cells.
<b>General notes</b>	<p><b>This product is FOR RESEARCH USE ONLY. For commercial use, please contact <a href="mailto:partnerships@abcam.com">partnerships@abcam.com</a>.</b></p> <p>Reproducibility is key to advancing scientific discovery and accelerating scientists' next breakthrough.</p> <p>Abcam is leading the way with our range of recombinant antibodies, knockout-validated antibodies and knockout cell lines, all of which support improved reproducibility.</p> <p>We are also planning to innovate the way in which we present recommended applications and species on our product datasheets, so that only applications &amp; species that have been tested in our own labs, our suppliers or by selected trusted collaborators are covered by our Abpromise™ guarantee.</p> <p>In preparation for this, we have started to update the applications &amp; species that this product is Abpromise guaranteed for.</p> <p>We are also updating the applications &amp; species that this product has been “predicted to work with,” however this information is not covered by our Abpromise guarantee.</p> <p>Applications &amp; species from publications and Abreviews that have not been tested in our own labs or in those of our suppliers are not covered by the Abpromise guarantee.</p> <p>Please check that this product meets your needs before purchasing. If you have any questions, special requirements or concerns, please send us an inquiry and/or contact our Support team ahead of purchase. Recommended alternatives for this product can be found below, as well as customer reviews and Q&amp;As.</p>

## Properties

<b>Form</b>	Liquid
<b>Storage instructions</b>	Shipped at 4°C. Store at +4°C short term (1-2 weeks). Upon delivery aliquot. Store at -20°C long term. Avoid freeze / thaw cycle.
<b>Storage buffer</b>	pH: 7.60 Preservative: 0.1% Sodium azide Constituents: PBS, 1% BSA
<b>Purity</b>	Immunogen affinity purified
<b>Purification notes</b>	Purified from TCS by protein A/G.
<b>Clonality</b>	Monoclonal
<b>Clone number</b>	SP189
<b>Isotype</b>	IgG

## Applications

Our [Abpromise guarantee](#) covers the use of **ab227665** in the following tested applications.

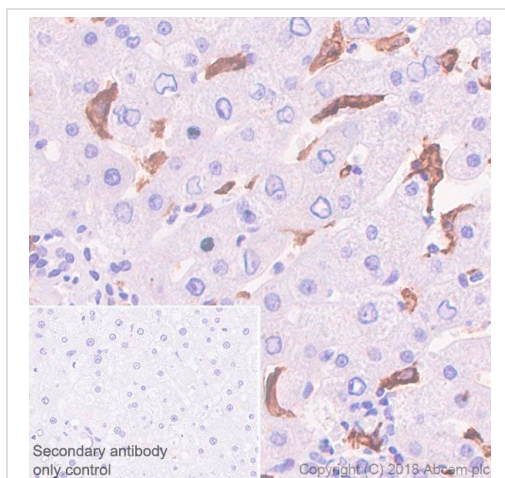
The application notes include recommended starting dilutions; optimal dilutions/concentrations should be determined by the end user.

Application	Abreviews	Notes
WB		1/100. Predicted molecular weight: 29 kDa.
IHC-P		1/100. Antigen retrieval: Boil tissue section in EDTA buffer, pH 8.0 for 10 minutes followed by cooling at room temperature for 20 minutes.
Flow Cyt		1/100.

## Target

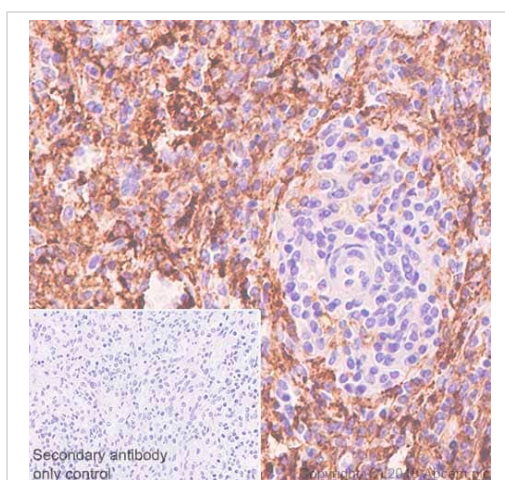
<b>Function</b>	Receptor for the Fc region of IgG. Binds complexed or aggregated IgG and also monomeric IgG. Mediates antibody-dependent cellular cytotoxicity (ADCC) and other antibody-dependent responses, such as phagocytosis.
<b>Tissue specificity</b>	Expressed on natural killer cells, macrophages, subpopulation of T-cells, immature thymocytes and placental trophoblasts.
<b>Involvement in disease</b>	Immunodeficiency 20
<b>Sequence similarities</b>	Contains 2 Ig-like C2-type (immunoglobulin-like) domains.
<b>Post-translational modifications</b>	Glycosylated. Contains high mannose- and complex-type oligosaccharides. Glycosylation at Asn-180 is mandatory for high affinity binding to the Fc and for discrimination between fucosylated and afucosylated IgG glycoforms. The soluble form is produced by a proteolytic cleavage.
<b>Cellular localization</b>	Cell membrane. Secreted. Exists also as a soluble receptor.

## Images



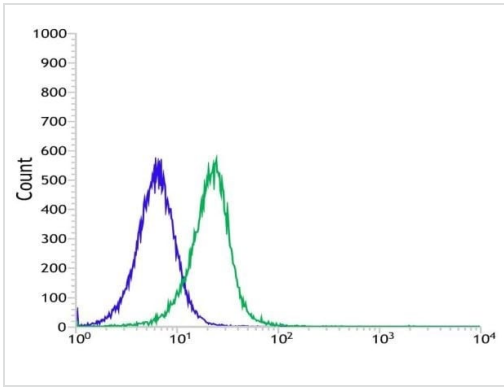
Immunohistochemistry (Formalin/PFA-fixed paraffin-embedded sections) - Anti-CD16a antibody [SP189] - C-terminal (ab227665)

Immunohistochemistry (Formalin/PFA-fixed paraffin-embedded sections) analysis of Human liver tissue sections labeling CD16a with ab227665 at 1/100 dilution (1.47 µg/ml). Heat mediated antigen retrieval was performed Heat mediated antigen retrieval with Tris-EDTA buffer (pH 9.0, epitope retrieval solution 2) for 10 mins. Rabbit specific IHC polymer detection kit HRP/DAB (ab209101) was used as the secondary antibody. Negative control: PBS instead of the primary antibody. Hematoxylin was used as a counterstain.



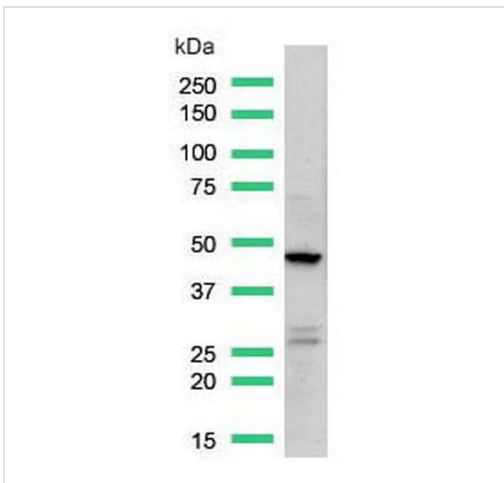
Immunohistochemistry (Formalin/PFA-fixed paraffin-embedded sections) - Anti-CD16a antibody [SP189] - C-terminal (ab227665)

Immunohistochemistry (Formalin/PFA-fixed paraffin-embedded sections) analysis of Human spleen tissue sections labeling CD16a with ab227665 at 1/100 dilution (1.47 µg/ml). Heat mediated antigen retrieval was performed Heat mediated antigen retrieval with Tris-EDTA buffer (pH 9.0, epitope retrieval solution 2) for 10 mins. Rabbit specific IHC polymer detection kit HRP/DAB (ab209101) was used as the secondary antibody. Negative control: PBS instead of the primary antibody. Hematoxylin was used as a counterstain.



Flow Cytometry - Anti-CD16a antibody [SP189] - C-terminal (ab227665)

Flow cytometric analysis of Jurkat (human T cell leukemia cell line from peripheral blood) cell line labeling CD16a with ab227665 at 1/100 (green) compared with a rabbit isotype control (blue).

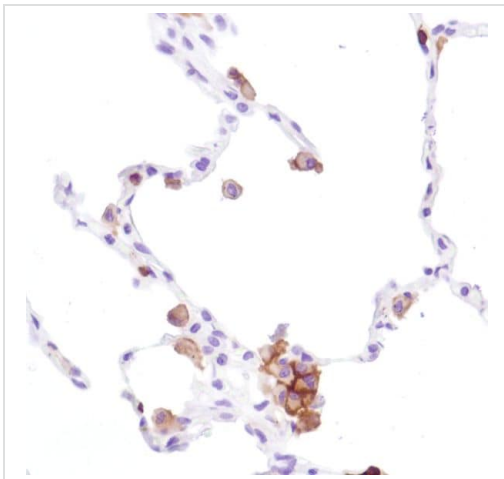


Western blot - Anti-CD16a antibody [SP189] - C-terminal (ab227665)

Anti-CD16a antibody [SP189] - C-terminal (ab227665) at 1/100 dilution + K562 (human chronic myelogenous leukemia cell line from bone marrow) cell lysate

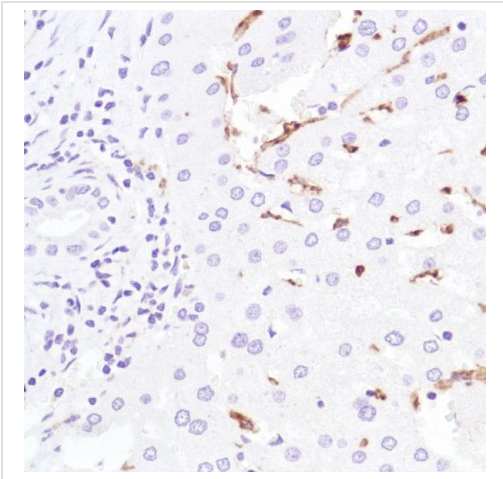
Developed using the ECL technique.

**Predicted band size: 29 kDa**



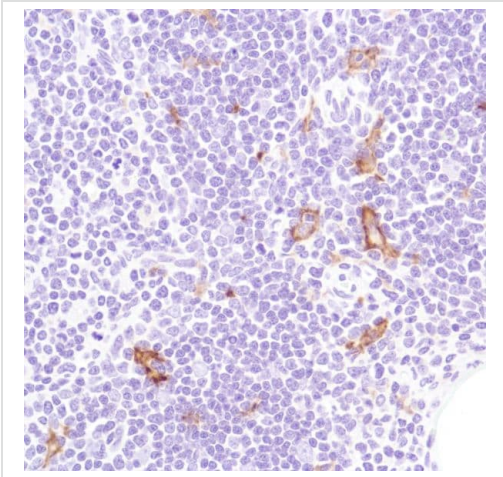
Immunohistochemistry (Formalin/PFA-fixed paraffin-embedded sections) - Anti-CD16a antibody [SP189] - C-terminal (ab227665)

Formalin-fixed, paraffin-embedded human lung tissue stained for CD16a with ab227665 at 1/100 dilution in immunohistochemical analysis.



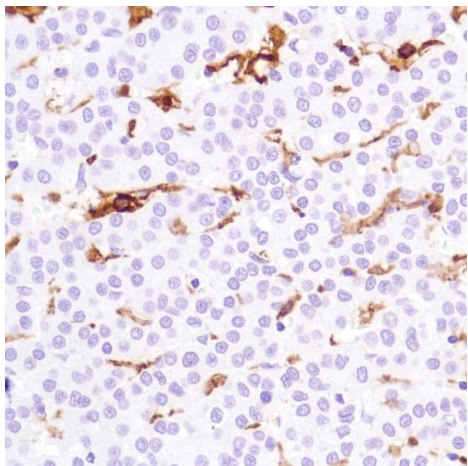
Formalin-fixed, paraffin-embedded human liver tissue stained for CD16a with ab227665 at 1/100 dilution in immunohistochemical analysis.

Immunohistochemistry (Formalin/PFA-fixed paraffin-embedded sections) - Anti-CD16a antibody [SP189]  
- C-terminal (ab227665)



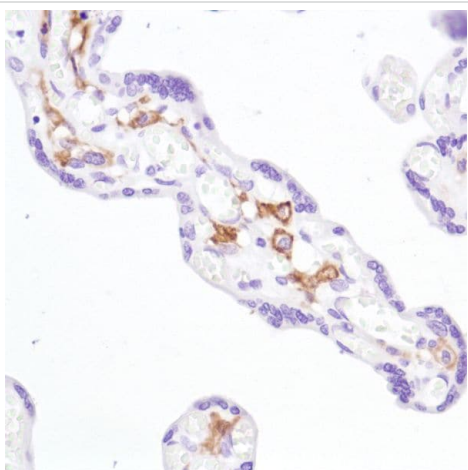
Formalin-fixed, paraffin-embedded human thymus tissue stained for CD16a with ab227665 at 1/100 dilution in immunohistochemical analysis.

Immunohistochemistry (Formalin/PFA-fixed paraffin-embedded sections) - Anti-CD16a antibody [SP189]  
- C-terminal (ab227665)



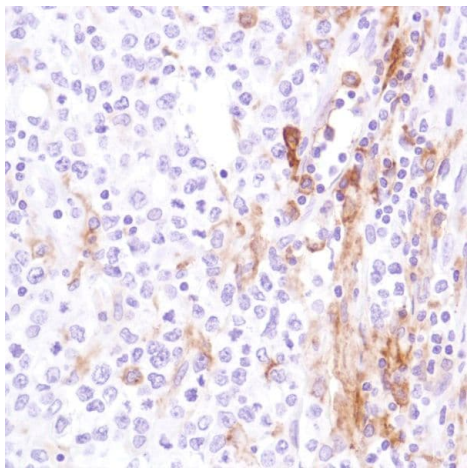
Formalin-fixed, paraffin-embedded human liver hepatocellular carcinoma tissue stained for CD16a with ab227665 at 1/100 dilution in immunohistochemical analysis.

Immunohistochemistry (Formalin/PFA-fixed paraffin-embedded sections) - Anti-CD16a antibody [SP189]  
- C-terminal (ab227665)



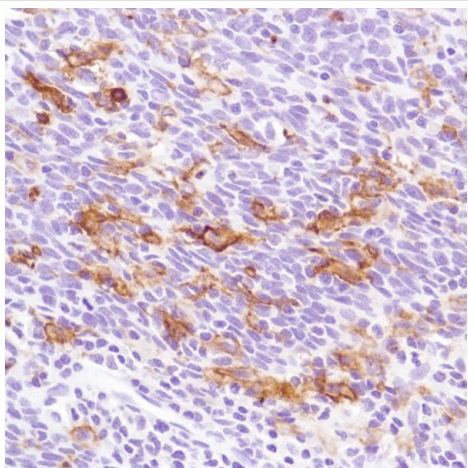
Formalin-fixed, paraffin-embedded human placenta tissue stained for CD16a with ab227665 at 1/100 dilution in immunohistochemical analysis.

Immunohistochemistry (Formalin/PFA-fixed paraffin-embedded sections) - Anti-CD16a antibody [SP189]  
- C-terminal (ab227665)



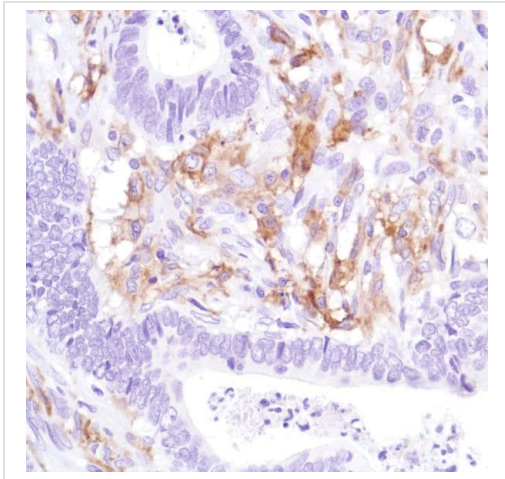
Formalin-fixed, paraffin-embedded human B-cell lymphoma tissue stained for CD16a with ab227665 at 1/100 dilution in immunohistochemical analysis.

Immunohistochemistry (Formalin/PFA-fixed paraffin-embedded sections) - Anti-CD16a antibody [SP189]  
- C-terminal (ab227665)



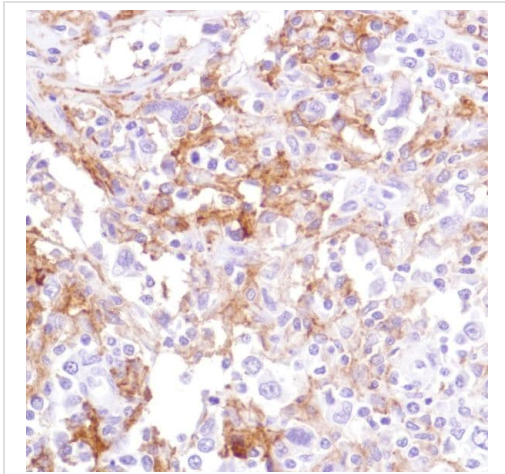
Formalin-fixed, paraffin-embedded human cervical squamous cell carcinoma tissue stained for CD16a with ab227665 at 1/100 dilution in immunohistochemical analysis.

Immunohistochemistry (Formalin/PFA-fixed paraffin-embedded sections) - Anti-CD16a antibody [SP189]  
- C-terminal (ab227665)



Formalin-fixed, paraffin-embedded human colon adenocarcinoma tissue stained for CD16a with ab227665 at 1/100 dilution in immunohistochemical analysis.

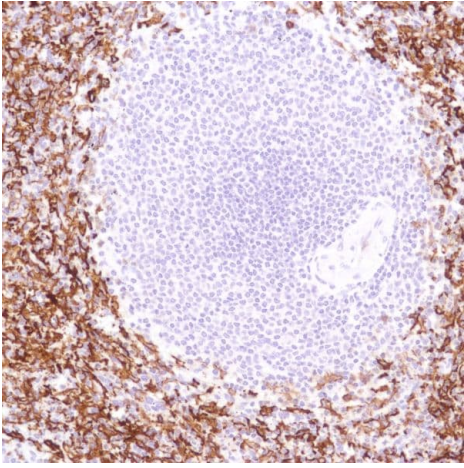
Immunohistochemistry (Formalin/PFA-fixed paraffin-embedded sections) - Anti-CD16a antibody [SP189]  
- C-terminal (ab227665)



Formalin-fixed, paraffin-embedded human HK lymphoma tissue stained for CD16a with ab227665 at 1/100 dilution in immunohistochemical analysis.

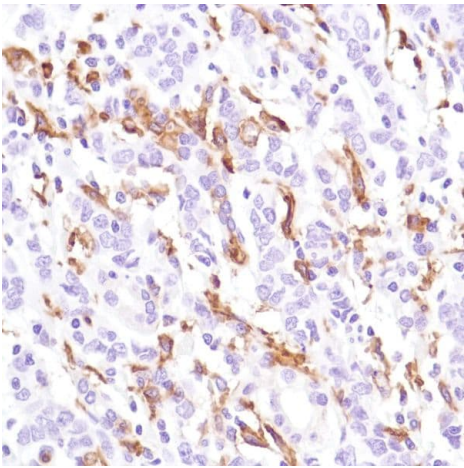
Immunohistochemistry (Formalin/PFA-fixed paraffin-embedded sections) - Anti-CD16a antibody [SP189]  
- C-terminal (ab227665)





Formalin-fixed, paraffin-embedded human spleen tissue stained for CD16a with ab227665 at 1/100 dilution in immunohistochemical analysis.

Immunohistochemistry (Formalin/PFA-fixed paraffin-embedded sections) - Anti-CD16a antibody [SP189]  
- C-terminal (ab227665)



Formalin-fixed, paraffin-embedded human stomach adenocarcinoma tissue stained for CD16a with ab227665 at 1/100 dilution in immunohistochemical analysis.

Immunohistochemistry (Formalin/PFA-fixed paraffin-embedded sections) - Anti-CD16a antibody [SP189]  
- C-terminal (ab227665)

Why choose a recombinant antibody?

**Research with confidence**  
Consistent and reproducible results

**Long-term and scalable supply**  
Recombinant technology

**Success from the first experiment**  
Confirmed specificity

**Ethical standards compliant**  
Animal-free production

Anti-CD16a antibody [SP189] - C-terminal  
(ab227665)

**Please note:** All products are "FOR RESEARCH USE ONLY. NOT FOR USE IN DIAGNOSTIC PROCEDURES"

### Our Abpromise to you: Quality guaranteed and expert technical support

---

- Replacement or refund for products not performing as stated on the datasheet
- Valid for 12 months from date of delivery
- Response to your inquiry within 24 hours
- We provide support in Chinese, English, French, German, Japanese and Spanish
- Extensive multi-media technical resources to help you
- We investigate all quality concerns to ensure our products perform to the highest standards

If the product does not perform as described on this datasheet, we will offer a refund or replacement. For full details of the Abpromise, please visit <https://www.abcam.com/abpromise> or contact our technical team.

### Terms and conditions

---

- Guarantee only valid for products bought direct from Abcam or one of our authorized distributors