

Product datasheet

Anti-CD1a antibody [C1A/711] ab201337

2 References 1 Image

Overview

Product name	Anti-CD1a antibody [C1A/711]
Description	Mouse monoclonal [C1A/711] to CD1a
Host species	Mouse
Tested applications	Suitable for: WB, IHC-P, IHC-Fr, Flow Cyt, IP, ICC/IF
Species reactivity	Reacts with: Human
Immunogen	Recombinant full length protein corresponding to Human CD1a. Database link: P06126
Positive control	Human skin tissue. MOLT-4 cells. Paracortex in a tonsil or a reactive lymph node.

Properties

Form	Liquid
Storage instructions	Shipped at 4°C. Store at +4°C short term (1-2 weeks). Upon delivery aliquot. Store at -20°C long term. Avoid freeze / thaw cycle.
Storage buffer	Preservative: 0.05% Sodium azide Constituents: 99% PBS, 0.05% BSA
Purity	Protein A/G purified
Purification notes	ab201337 is purified from Bioreactor Concentrate.
Clonality	Monoclonal
Clone number	C1A/711
Isotype	IgG1
Light chain type	kappa

Applications

Our [Abpromise guarantee](#) covers the use of **ab201337** in the following tested applications.

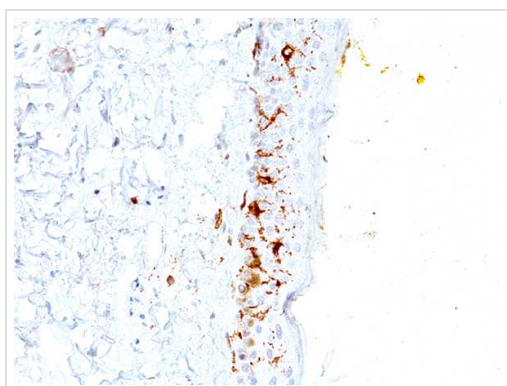
The application notes include recommended starting dilutions; optimal dilutions/concentrations should be determined by the end user.

Application	Abreviews	Notes
WB		Use a concentration of 0.5 - 1 µg/ml. Predicted molecular weight: 37 kDa.
IHC-P		Use a concentration of 0.5 - 1 µg/ml. Perform heat mediated antigen retrieval with citrate buffer pH 6 before commencing with IHC staining protocol. For 30 min at RT.
IHC-Fr		Use a concentration of 0.5 - 1 µg/ml. For 30 min at RT.
Flow Cyt		Use 0.5-1µg for 10 ⁶ cells. ab170190 - Mouse monoclonal IgG1, is suitable for use as an isotype control with this antibody.
IP		Use at 2-4 µg/mg of lysate.
ICC/IF		Use a concentration of 1 - 2 µg/ml.

Target

Function	Antigen-presenting protein that binds self and non-self lipid and glycolipid antigens and presents them to T-cell receptors on natural killer T-cells.
Tissue specificity	Expressed on cortical thymocytes, epidermal Langerhans cells, dendritic cells, on certain T-cell leukemias, and in various other tissues.
Sequence similarities	Contains 1 Ig-like (immunoglobulin-like) domain.
Cellular localization	Cell membrane. Endosome membrane. Subject to intracellular trafficking between the cell membrane and endosomes. Localizes to cell surface lipid rafts.

Images



Immunohistochemical analysis of formalin-fixed, paraffin-embedded Human skin tissue labeling CD1a with [ab201337](#) at 1 µg/ml.

Immunohistochemistry (Formalin/PFA-fixed paraffin-embedded sections) - Anti-CD1a antibody [C1A/711] ([ab201337](#))

Please note: All products are "FOR RESEARCH USE ONLY. NOT FOR USE IN DIAGNOSTIC PROCEDURES"

Our Abpromise to you: Quality guaranteed and expert technical support

- Replacement or refund for products not performing as stated on the datasheet
- Valid for 12 months from date of delivery
- Response to your inquiry within 24 hours

- We provide support in Chinese, English, French, German, Japanese and Spanish
- Extensive multi-media technical resources to help you
- We investigate all quality concerns to ensure our products perform to the highest standards

If the product does not perform as described on this datasheet, we will offer a refund or replacement. For full details of the Abpromise, please visit <https://www.abcam.com/abpromise> or contact our technical team.

Terms and conditions

- Guarantee only valid for products bought direct from Abcam or one of our authorized distributors