

## Product datasheet

# Anti-CD1d antibody [NOR3.2 (NOR3.2/13.17)] - BSA and Azide free ab238657

[2 Images](#)

### Overview

<b>Product name</b>	Anti-CD1d antibody [NOR3.2 (NOR3.2/13.17)] - BSA and Azide free
<b>Description</b>	Mouse monoclonal [NOR3.2 (NOR3.2/13.17)] to CD1d - BSA and Azide free
<b>Host species</b>	Mouse
<b>Tested applications</b>	<b>Suitable for:</b> IP, IHC-P, IHC-Fr, Flow Cyt, ICC/IF
<b>Species reactivity</b>	<b>Reacts with:</b> Human
<b>Immunogen</b>	Fusion protein corresponding to Human CD1d.
<b>Positive control</b>	IHC-P: Human skin tissue. Flow Cyt: MOLT4 cells.
<b>General notes</b>	<p>ab238657 is a PBS-only buffer format of <a href="#">ab11076</a>.</p> <p>This antibody clone is manufactured by Abcam.</p> <p>If you require this antibody in a particular buffer formulation or a particular conjugate for your experiments, please contact <a href="mailto:orders@abcam.com">orders@abcam.com</a> or you can find further information <a href="#">here</a>.</p> <p>Reproducibility is key to advancing scientific discovery and accelerating scientists' next breakthrough.</p> <p>Abcam is leading the way with our range of recombinant antibodies, knockout-validated antibodies and knockout cell lines, all of which support improved reproducibility.</p> <p>We are also planning to innovate the way in which we present recommended applications and species on our product datasheets, so that only applications &amp; species that have been tested in our own labs, our suppliers or by selected trusted collaborators are covered by our Abpromise™ guarantee.</p> <p>In preparation for this, we have started to update the applications &amp; species that this product is Abpromise guaranteed for.</p> <p>We are also updating the applications &amp; species that this product has been “predicted to work with,” however this information is not covered by our Abpromise guarantee.</p> <p>Applications &amp; species from publications and Abreviews that have not been tested in our own labs or in those of our suppliers are not covered by the Abpromise guarantee.</p> <p>Please check that this product meets your needs before purchasing. If you have any questions, special requirements or concerns, please send us an inquiry and/or contact our Support team ahead of purchase. Recommended alternatives for this product can be found below, as well as customer reviews and Q&amp;As.</p>

## Properties

---

<b>Form</b>	Liquid
<b>Storage instructions</b>	Shipped at 4°C. Store at +4°C. Do Not Freeze.
<b>Storage buffer</b>	Constituent: PBS
<b>Carrier free</b>	Yes
<b>Purity</b>	Protein G purified
<b>Purification notes</b>	Purified from tissue culture supernatant.
<b>Clonality</b>	Monoclonal
<b>Clone number</b>	NOR3.2 (NOR3.2/13.17)
<b>Myeloma</b>	NS0
<b>Isotype</b>	IgG1
<b>Light chain type</b>	kappa

## Applications

---

Our [Abpromise guarantee](#) covers the use of **ab238657** in the following tested applications.

The application notes include recommended starting dilutions; optimal dilutions/concentrations should be determined by the end user.

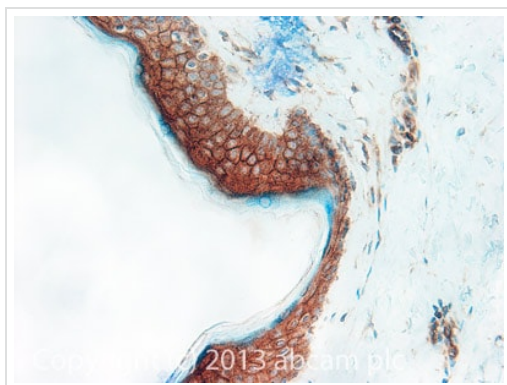
Application	Abreviews	Notes
IP		Use at an assay dependent concentration.
IHC-P		Use a concentration of 5 µg/ml. Perform heat mediated antigen retrieval before commencing with IHC staining protocol.
IHC-Fr		Use at an assay dependent concentration.
Flow Cyt		Use 1µg for 10 <sup>6</sup> cells. <a href="#">ab170190</a> - Mouse monoclonal IgG1, is suitable for use as an isotype control with this antibody.
ICC/IF		Use at an assay dependent concentration.

## Target

---

<b>Function</b>	Antigen-presenting protein that binds self and non-self glycolipids and presents them to T-cell receptors on natural killer T-cells.
<b>Tissue specificity</b>	Expressed on cortical thymocytes, on certain T-cell leukemias, and in various other tissues.
<b>Sequence similarities</b>	Contains 1 Ig-like (immunoglobulin-like) domain.
<b>Cellular localization</b>	Cell membrane. Endosome membrane. Lysosome membrane. Subject to intracellular trafficking between the cell membrane, endosomes and lysosomes.

---

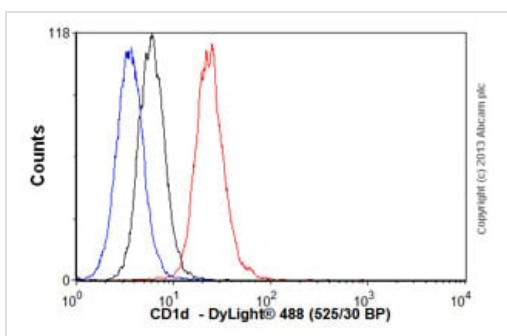


Immunohistochemistry (Formalin/PFA-fixed paraffin-embedded sections) - Anti-CD1d antibody [NOR3.2 (NOR3.2/13.17)] - BSA and Azide free (ab238657)

IHC image of CD1d staining in human normal skin formalin fixed paraffin embedded tissue section, performed on a Leica Bond<sup>TM</sup> system using the standard protocol F. The section was pre-treated using heat mediated antigen retrieval with EDTA based pH 9.0 solution (epitope retrieval solution 2) for 20 mins. The section was then incubated with [ab11076](#), 5µg/ml, for 15 mins at room temperature and detected using an HRP conjugated compact polymer system. DAB was used as the chromogen. The section was then counterstained with haematoxylin and mounted with DPX.

For other IHC staining systems (automated and non-automated) customers should optimize variable parameters such as antigen retrieval conditions, primary antibody concentration and antibody incubation times.

This image was produced using the same antibody clone but in a different formulation; PBS, arginine and sodium azide ([ab11076](#)).



Flow Cytometry - Anti-CD1d antibody [NOR3.2 (NOR3.2/13.17)] - BSA and Azide free (ab238657)

Overlay histogram showing MOLT4 cells stained with [ab11076](#) (red line). The cells were fixed with 4% paraformaldehyde (10 min) and then permeabilized with 0.1% PBS-Tween for 20 min. The cells were then incubated in 1x PBS / 10% normal goat serum / 0.3M glycine to block non-specific protein-protein interactions followed by the antibody ([ab11076](#), 1µg/1x10<sup>6</sup> cells) for 30 min at 22°C. The secondary antibody used was DyLight<sup>®</sup> 488 goat anti-mouse IgG (H+L) ([ab96879](#)) at 1/500 dilution for 30 min at 22°C. Isotype control antibody (black line) was mouse IgG1 [ICIGG1] ([ab91353](#), 2µg/1x10<sup>6</sup> cells) used under the same conditions. Unlabeled sample (blue line). Acquisition of >5,000 events were collected using a 20mW Argon ion laser (488nm) and 525/30 bandpass filter.

This image was produced using the same antibody clone but in a different formulation; PBS, arginine and sodium azide ([ab11076](#)).

**Please note:** All products are "FOR RESEARCH USE ONLY. NOT FOR USE IN DIAGNOSTIC PROCEDURES"

### Our Abpromise to you: Quality guaranteed and expert technical support

- Replacement or refund for products not performing as stated on the datasheet
- Valid for 12 months from date of delivery
- Response to your inquiry within 24 hours
- We provide support in Chinese, English, French, German, Japanese and Spanish

- Extensive multi-media technical resources to help you
- We investigate all quality concerns to ensure our products perform to the highest standards

If the product does not perform as described on this datasheet, we will offer a refund or replacement. For full details of the Abpromise, please visit <https://www.abcam.com/abpromise> or contact our technical team.

### **Terms and conditions**

---

- Guarantee only valid for products bought direct from Abcam or one of our authorized distributors