

Product datasheet

Anti-CD2 antibody [B-E2] (Biotin) ab27395

[1 References](#) [1 Image](#)

Overview

Product name	Anti-CD2 antibody [B-E2] (Biotin)
Description	Mouse monoclonal [B-E2] to CD2 (Biotin)
Host species	Mouse
Conjugation	Biotin
Specificity	Recognises the Lymphocyte Function associated Antigen-2 (LFA-2)
Tested applications	Suitable for: Flow Cyt
Species reactivity	Reacts with: Human
Immunogen	Human thymocytes
Positive control	Lymphocytes
General notes	Abcam is committed to meeting high standards of ethical manufacturing and has decided to discontinue this product by June 2019 as it has been generated by the ascites method. We are sorry for any inconvenience this may cause.

Properties

Form	Lyophilised:Reconstitute with 1 ml deionised water
Storage instructions	Shipped at 4°C. Store at +4°C short term (1-2 weeks). Store at -20°C or -80°C. Avoid freeze / thaw cycle.
Storage buffer	Preservative: 0.1% Sodium azide Constituents: PBS, 1% BSA
Purity	Ascites
Purification notes	Purified from ascites.
Clonality	Monoclonal
Clone number	B-E2
Myeloma	x63-Ag8.653
Isotype	IgG2b

Applications

Our [Abpromise guarantee](#) covers the use of **ab27395** in the following tested applications.

The application notes include recommended starting dilutions; optimal dilutions/concentrations should be determined by the end user.

Application	Abreviews	Notes
-------------	-----------	-------

Flow Cyt

Application notes

Flow Cyt: Use 10 μ l for 10⁶ cells or 100 μ l of whole blood.

Not yet tested in other applications.

Optimal dilutions/concentrations should be determined by the end user.

Target

Function

CD2 interacts with lymphocyte function-associated antigen (LFA-3) and CD48/BCM1 to mediate adhesion between T-cells and other cell types. CD2 is implicated in the triggering of T-cells, the cytoplasmic domain is implicated in the signaling function.

Sequence similarities

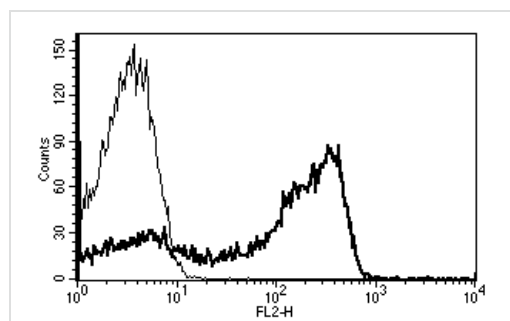
Contains 1 Ig-like C2-type (immunoglobulin-like) domain.

Contains 1 Ig-like V-type (immunoglobulin-like) domain.

Cellular localization

Membrane.

Images



A typical staining pattern with ab27395 of lymphocytes

Flow Cytometry - Anti-CD2 antibody [B-E2] (Biotin)
(ab27395)

Please note: All products are "FOR RESEARCH USE ONLY AND ARE NOT INTENDED FOR DIAGNOSTIC OR THERAPEUTIC USE"

Our Abpromise to you: Quality guaranteed and expert technical support

- Replacement or refund for products not performing as stated on the datasheet
- Valid for 12 months from date of delivery
- Response to your inquiry within 24 hours
- We provide support in Chinese, English, French, German, Japanese and Spanish

- Extensive multi-media technical resources to help you
- We investigate all quality concerns to ensure our products perform to the highest standards

If the product does not perform as described on this datasheet, we will offer a refund or replacement. For full details of the Abpromise, please visit <https://www.abcam.com/abpromise> or contact our technical team.

Terms and conditions

- Guarantee only valid for products bought direct from Abcam or one of our authorized distributors