

Product datasheet

Anti-CD20 antibody [AISB12] - Low endotoxin, Azide free ab171203

2 Images

Overview

Product name	Anti-CD20 antibody [AISB12] - Low endotoxin, Azide free
Description	Rat monoclonal [AISB12] to CD20 - Low endotoxin, Azide free
Host species	Rat
Tested applications	Suitable for: WB, Flow Cyt, Functional Studies
Species reactivity	Reacts with: Mouse
Immunogen	The details of the immunogen for this antibody are not available.
Positive control	A20 cell lysate; BALB/c splenocytes.
General notes	Endotoxin Level: Less than 0.001 ng/μg antibody, as determined by the LAL assay.

Properties

Form	Liquid
Storage instructions	Shipped at 4°C. Store at +4°C short term (1-2 weeks). Upon delivery aliquot. Store at -20°C long term. Avoid freeze / thaw cycle.
Storage buffer	Constituent: PBS Aqueous buffer, no sodium azide.
Purity	Protein G purified
Clonality	Monoclonal
Clone number	AISB12
Isotype	IgG2a

Applications

Our [Abpromise guarantee](#) covers the use of **ab171203** in the following tested applications.

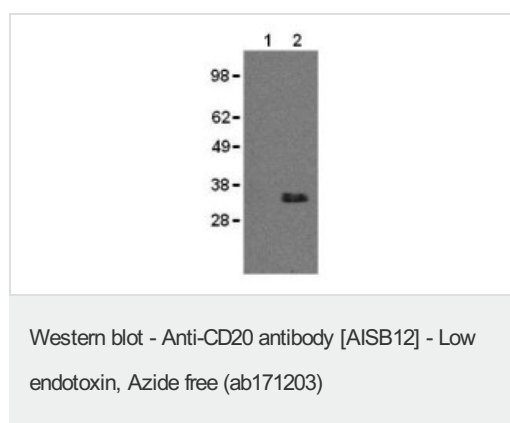
The application notes include recommended starting dilutions; optimal dilutions/concentrations should be determined by the end user.

Application	Abreviews	Notes
WB		Use at an assay dependent concentration. Predicted molecular weight: 32 kDa.
Flow Cyt		Use 0.25µg for 10 ⁵⁻⁸ cells. (in a final volume of 100 µL). ab18450 - Rat monoclonal IgG2a, is suitable for use as an isotype control with this antibody.
Functional Studies		Use at an assay dependent concentration.

Target

Function	This protein may be involved in the regulation of B-cell activation and proliferation.
Tissue specificity	Expressed on B-cells.
Involvement in disease	Defects in MS4A1 are the cause of immunodeficiency common variable type 5 (CVID5) [MIM:613495]; also called antibody deficiency due to CD20 defect. CVID5 is a primary immunodeficiency characterized by antibody deficiency, hypogammaglobulinemia, recurrent bacterial infections and an inability to mount an antibody response to antigen. The defect results from a failure of B-cell differentiation and impaired secretion of immunoglobulins; the numbers of circulating B cells is usually in the normal range, but can be low.
Sequence similarities	Belongs to the MS4A family.
Post-translational modifications	Phosphorylated. Might be functionally regulated by protein kinase(s).
Cellular localization	Membrane.

Images

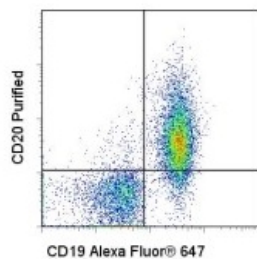


All lanes : Anti-CD20 antibody [AISB12] - Low endotoxin, Azide free (ab171203)

Lane 1 : Balb/c thymus cell lysate

Lane 2 : A20 cell lysate

Predicted band size: 32 kDa



Flow cytometric analysis of BALB/c splenocytes with Anti-Mouse CD19 Alexa Fluor® 647 and 1.0 ug ab171203 followed by Anti-Rat IgG PE. Quadrant lines represent Rat IgG2a isotype control staining levels and cells in the lymphocyte gate were used for analysis.

Flow Cytometry - Anti-CD20 antibody [AISB12] -
Low endotoxin, Azide free (ab171203)

Please note: All products are "FOR RESEARCH USE ONLY AND ARE NOT INTENDED FOR DIAGNOSTIC OR THERAPEUTIC USE"

Our Abpromise to you: Quality guaranteed and expert technical support

- Replacement or refund for products not performing as stated on the datasheet
- Valid for 12 months from date of delivery
- Response to your inquiry within 24 hours
- We provide support in Chinese, English, French, German, Japanese and Spanish
- Extensive multi-media technical resources to help you
- We investigate all quality concerns to ensure our products perform to the highest standards

If the product does not perform as described on this datasheet, we will offer a refund or replacement. For full details of the Abpromise, please visit <https://www.abcam.com/abpromise> or contact our technical team.

Terms and conditions

- Guarantee only valid for products bought direct from Abcam or one of our authorized distributors