

## Product datasheet

# Anti-CD226 antibody [EPR21243] ab242030

Recombinant

2 Images

### Overview

<b>Product name</b>	Anti-CD226 antibody [EPR21243]
<b>Description</b>	Rabbit monoclonal [EPR21243] to CD226
<b>Host species</b>	Rabbit
<b>Tested applications</b>	<b>Suitable for:</b> Flow Cyt
<b>Species reactivity</b>	<b>Reacts with:</b> Human
<b>Immunogen</b>	Tissue, cells or virus. Database link: <a href="#">Q15762</a>
<b>Positive control</b>	Flow Cyt: Jurkat cells
<b>General notes</b>	<p>This product was made using <a href="#">synthetic libraries and phage display technology</a>.</p> <p>This antibody is a recombinant chimeric antibody. Rabbit chimeric monoclonal antibody (Human Fab/ Rabbit Fc).</p> <p>Reproducibility is key to advancing scientific discovery and accelerating scientists' next breakthrough.</p> <p>Abcam is leading the way with our range of recombinant antibodies, knockout-validated antibodies and knockout cell lines, all of which support improved reproducibility.</p> <p>We are also planning to innovate the way in which we present recommended applications and species on our product datasheets, so that only applications &amp; species that have been tested in our own labs, our suppliers or by selected trusted collaborators are covered by our Abpromise™ guarantee.</p> <p>In preparation for this, we have started to update the applications &amp; species that this product is Abpromise guaranteed for.</p> <p>We are also updating the applications &amp; species that this product has been “predicted to work with,” however this information is not covered by our Abpromise guarantee.</p> <p>Applications &amp; species from publications and Abreviews that have not been tested in our own labs or in those of our suppliers are not covered by the Abpromise guarantee.</p> <p>Please check that this product meets your needs before purchasing. If you have any questions, special requirements or concerns, please send us an inquiry and/or contact our Support team ahead of purchase. Recommended alternatives for this product can be found below, as well as customer reviews and Q&amp;As.</p>

## Properties

<b>Form</b>	Liquid
<b>Storage instructions</b>	Shipped at 4°C. Store at +4°C short term (1-2 weeks). Upon delivery aliquot. Store at -20°C long term. Avoid freeze / thaw cycle.
<b>Storage buffer</b>	Preservative: 0.02% Sodium azide Constituents: PBS, 1% BSA
<b>Purity</b>	Immunogen affinity purified
<b>Clonality</b>	Monoclonal
<b>Clone number</b>	EPR21243
<b>Isotype</b>	IgG1

## Applications

Our [Abpromise guarantee](#) covers the use of **ab242030** in the following tested applications.

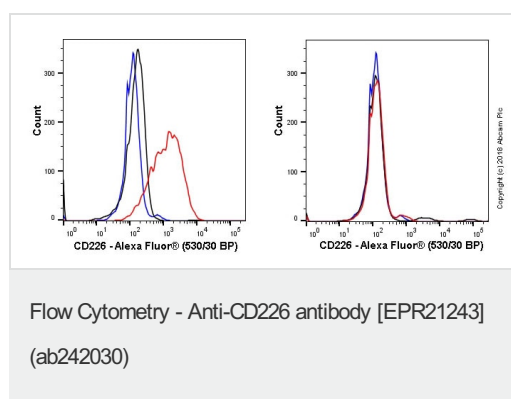
The application notes include recommended starting dilutions; optimal dilutions/concentrations should be determined by the end user.

Application	Abreviews	Notes
Flow Cyt		Use a concentration of 1 µg/ml.

## Target

<b>Function</b>	Receptor involved in intercellular adhesion, lymphocyte signaling, cytotoxicity and lymphokine secretion mediated by cytotoxic T-lymphocyte (CTL) and NK cell.
<b>Tissue specificity</b>	Expressed by peripheral blood T-lymphocytes.
<b>Sequence similarities</b>	Contains 2 Ig-like C2-type (immunoglobulin-like) domains.
<b>Cellular localization</b>	Membrane.

## Images



Overlay histograms showing left Jurkat and right MCF-7 cells stained with ab242030 (red line). The cells were incubated in 1x PBS / 10% normal goat serum to block non-specific protein-protein interactions followed by the antibody (ab242030,  $1 \times 10^6$  cells in 100ul at 1ug/ml) for 30 min on ice. The secondary antibody used was Alexa Fluor® 488 goat anti-rabbit IgG (H&L) preabsorbed (4ug/ml) for 30 min on ice.


Isotype control antibody (black line) was Rabbit IgG (monoclonal) used at the same concentration and conditions as the primary antibody. Unlabelled sample (blue line) was also used as a control.

Acquisition of >5,000 events were collected using a 20 mW Blue

laser (488nm) and 530/30 bandpass filter.

**Negative control:** MCF-7 cells.

Why choose a recombinant antibody?



- Research with confidence**  
Consistent and reproducible results
- Long-term and scalable supply**  
Recombinant technology
- Success from the first experiment**  
Confirmed specificity
- Ethical standards compliant**  
Animal-free production

Anti-CD226 antibody [EPR21243] (ab242030)

**Please note:** All products are "FOR RESEARCH USE ONLY. NOT FOR USE IN DIAGNOSTIC PROCEDURES"

### Our Abpromise to you: Quality guaranteed and expert technical support

---

- Replacement or refund for products not performing as stated on the datasheet
- Valid for 12 months from date of delivery
- Response to your inquiry within 24 hours
- We provide support in Chinese, English, French, German, Japanese and Spanish
- Extensive multi-media technical resources to help you
- We investigate all quality concerns to ensure our products perform to the highest standards

If the product does not perform as described on this datasheet, we will offer a refund or replacement. For full details of the Abpromise, please visit <https://www.abcam.com/abpromise> or contact our technical team.

### Terms and conditions

---

- Guarantee only valid for products bought direct from Abcam or one of our authorized distributors