

Product datasheet

Anti-CD25 antibody [PC61.5] (Phycoerythrin) ab210334

1 Image

Overview

Product name	Anti-CD25 antibody [PC61.5] (Phycoerythrin)
Description	Rat monoclonal [PC61.5] to CD25 (Phycoerythrin)
Host species	Rat
Conjugation	Phycoerythrin. Ex: 488nm, Em: 575nm
Tested applications	Suitable for: Flow Cyt
Species reactivity	Reacts with: Mouse
Immunogen	The details of the immunogen for this antibody are not available.
Positive control	C57Bl/6 mouse spleen cells
General notes	<p>ab210334 is used as a marker for T cells, B cells and dendritic cell subsets. Expression of CD25, CD4 and the transcription factor Foxp3 is regarded as a phenotypic signature for Treg cells. As such, this antibody is widely used for depletion of Treg cells in vivo, as well as to distinguish Treg cells from naive or conventional T cells which are CD25-.</p> <p>The purified antibody was conjugated under optimal conditions, with unreacted dye removed from the preparation.</p>

Properties

Form	Liquid
Storage instructions	Shipped at 4°C. Store at +4°C. Store In the Dark.
Storage buffer	<p>pH: 7.2</p> <p>Preservative: 0.09% Sodium azide</p> <p>Constituents: 0.12% Monobasic dihydrogen sodium phosphate, 0.87% Sodium chloride, 0.1% Gelatin</p>
Purity	Affinity purified
Purification notes	ab210334 was purified from tissue culture supernatant.
Clonality	Monoclonal
Clone number	PC61.5
Isotype	IgG1
Light chain type	lambda

Applications

Our [Abpromise guarantee](#) covers the use of **ab210334** in the following tested applications.

The application notes include recommended starting dilutions; optimal dilutions/concentrations should be determined by the end user.

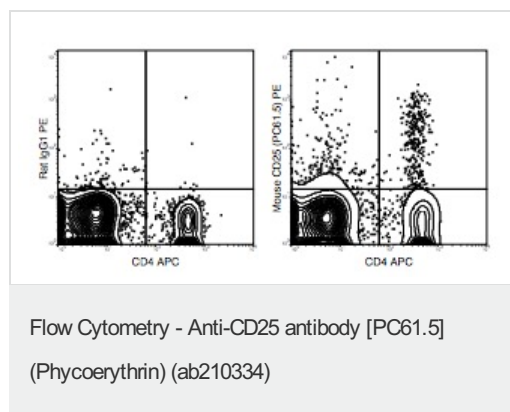
Application	Abreviews	Notes
Flow Cyt		Use at an assay dependent concentration. Use at 0.125 µg.

Target

Relevance The interleukin 2 (IL2) receptor alpha (IL2RA) (CD25) and beta (IL2RB) chains, together with the common gamma chain (IL2RG), constitute the high-affinity IL2 receptor. Homodimeric alpha chains (IL2RA) result in low-affinity receptor, while homodimeric beta (IL2RB) chains produce a medium-affinity receptor. Normally an integral-membrane protein, soluble CD25 has been isolated and determined to result from extracellular proteolysis.

Cellular localization Type I Cell Membrane

Images



Flow cytometric analysis of mouse C57Bl/6 spleen cells stained with APC Anti-Mouse CD4 antibody and ab210334 at 0.125 µg (right panel), or PE Rat IgG1 isotype control 0.125 µg (left panel).

Please note: All products are "FOR RESEARCH USE ONLY. NOT FOR USE IN DIAGNOSTIC PROCEDURES"

Our Abpromise to you: Quality guaranteed and expert technical support

- Replacement or refund for products not performing as stated on the datasheet
- Valid for 12 months from date of delivery
- Response to your inquiry within 24 hours
- We provide support in Chinese, English, French, German, Japanese and Spanish
- Extensive multi-media technical resources to help you
- We investigate all quality concerns to ensure our products perform to the highest standards

If the product does not perform as described on this datasheet, we will offer a refund or replacement. For full details of the Abpromise,

please visit <https://www.abcam.com/abpromise> or contact our technical team.

Terms and conditions

- Guarantee only valid for products bought direct from Abcam or one of our authorized distributors