

Product datasheet

Anti-OX40L/TNFSF4 antibody [ATM-2] (FITC) ab124047

2 References 1 Image

Overview

Product name	Anti-OX40L/TNFSF4 antibody [ATM-2] (FITC)
Description	Mouse monoclonal [ATM-2] to OX40L/TNFSF4 (FITC)
Host species	Mouse
Conjugation	FITC. Ex: 493nm, Em: 528nm
Tested applications	Suitable for: Flow Cyt
Species reactivity	Reacts with: Rat
Immunogen	ACI-S1 Rat T cell lymphoma cell line.
Positive control	LPS stimulated Rat splenocytes
General notes	ab124047 should be stored undiluted, and in the dark. Clone ATM-2 has been shown to block the costimulatory activity of CD252 on Rat T cell proliferation.

Properties

Form	Liquid
Storage instructions	Shipped at 4°C. Store at +4°C.
Storage buffer	Preservative: 0.09% Sodium azide Constituents: 98% PBS, 1% BSA
Purity	Protein G purified
Purification notes	Purified IgG was prepared by affinity chromatography on Protein G from tissue culture supernatant.
Primary antibody notes	Clone ATM-2 has been shown to block the costimulatory activity of CD252 on Rat T cell proliferation.
Clonality	Monoclonal
Clone number	ATM-2
Isotype	IgG1

Applications

Our [Abpromise guarantee](#) covers the use of **ab124047** in the following tested applications.

The application notes include recommended starting dilutions; optimal dilutions/concentrations should be determined by the end user.

Application	Abreviews	Notes
-------------	-----------	-------

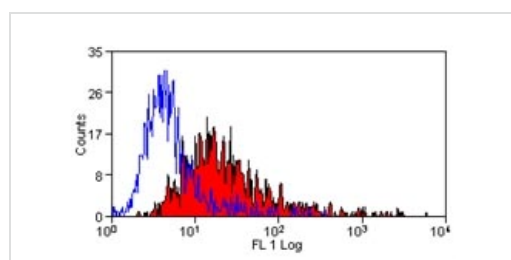
Flow Cyt	1/1.	Use 10 µl of the suggested working dilution to label 1x10 ⁶ cells in 100 µl.
----------	------	---

[ab91356](#) - Mouse monoclonal IgG1, is suitable for use as an isotype control with this antibody.

Target

Function	Cytokine that binds to TNFRSF4. Co-stimulates T-cell proliferation and cytokine production.
Involvement in disease	Genetic variations in TNFSF4 influence susceptibility to systemic lupus erythematosus (SLE) [MIM:152700]. SLE is a chronic, inflammatory and often febrile multisystemic disorder of connective tissue. It affects principally the skin, joints, kidneys and serosal membranes. It is thought to represent a failure of the regulatory mechanisms of the autoimmune system. Note=The upstream region of TNFSF4 contains a single risk haplotype for SLE, which is correlated with increased expression of both cell-surface TNFSF4 and TNFSF4 transcripts. Increased levels of TNFSF4 are thought to augment T cell-APC interaction and the functional consequences of T cell activation, thereby destabilizing peripheral tolerance.
Sequence similarities	Belongs to the tumor necrosis factor family.
Cellular localization	Membrane.

Images



Flow Cytometry - Anti-OX40L/TNFSF4 antibody
[ATM-2] (FITC) (ab124047)

[ab124032](#), at 10 µl per 1x10⁶ cells in 100 µl, staining OX40L/TNFSF4 in LPS stimulated Rat splenocytes by Flow Cytometry.

Please note: All products are "FOR RESEARCH USE ONLY. NOT FOR USE IN DIAGNOSTIC PROCEDURES"

Our Abpromise to you: Quality guaranteed and expert technical support

- Replacement or refund for products not performing as stated on the datasheet
- Valid for 12 months from date of delivery
- Response to your inquiry within 24 hours

- We provide support in Chinese, English, French, German, Japanese and Spanish
- Extensive multi-media technical resources to help you
- We investigate all quality concerns to ensure our products perform to the highest standards

If the product does not perform as described on this datasheet, we will offer a refund or replacement. For full details of the Abpromise, please visit <https://www.abcam.com/abpromise> or contact our technical team.

Terms and conditions

- Guarantee only valid for products bought direct from Abcam or one of our authorized distributors