



Product datasheet

Anti-CD272/BTLA antibody [4B12A7] ab233809

3 Images

Overview

Product name	Anti-CD272/BTLA antibody [4B12A7]
Description	Mouse monoclonal [4B12A7] to CD272/BTLA
Host species	Mouse
Tested applications	Suitable for: WB, Flow Cyt
Species reactivity	Reacts with: Human
Immunogen	<p>Recombinant fragment corresponding to Human CD272/BTLA aa 179-289. Cytoplasmic domain. Expressed in E.coli.</p> <p>Sequence:</p> <p>RRHQGKQNELSDTAGREINLVDAHLKSEQTEASTRQN SQVLLSETGIYDN DPDLCFRMQEGSEVYSNPCLEENKPGMYASLNHSVI GPNSRLARNVKEA PTEYASICVRS</p> <p>Database link: Q7Z6A9</p> <p style="text-align: right;"> Run BLAST with  Run BLAST with</p>
Positive control	WB: Recombinant human CD272/BTLA (aa 179-289) protein; CD272/BTLA (aa 179-289)-hlgG-Fc-transfected HEK-293 cell lysate. Flow cyt: HL-60 cells.
General notes	This product was previously labelled as CD272

Properties

Form	Liquid
Storage instructions	Shipped at 4°C. Store at +4°C short term (1-2 weeks). Upon delivery aliquot. Store at -20°C long term. Avoid freeze / thaw cycle.
Storage buffer	<p>Preservative: 0.05% Sodium azide</p> <p>Constituent: PBS</p>
Purity	Protein G purified
Purification notes	Purified from tissue culture supernatant.
Clonality	Monoclonal
Clone number	4B12A7

Isotype

IgG1

Applications

Our [Abpromise guarantee](#) covers the use of **ab233809** in the following tested applications.

The application notes include recommended starting dilutions; optimal dilutions/concentrations should be determined by the end user.

Application	Abreviews	Notes
WB		1/500 - 1/2000.
Flow Cyt		1/200 - 1/400.

Target

Function

Lymphocyte inhibitory receptor which inhibits lymphocytes during immune response.

Sequence similarities

Contains 1 Ig-like V-type (immunoglobulin-like) domain.

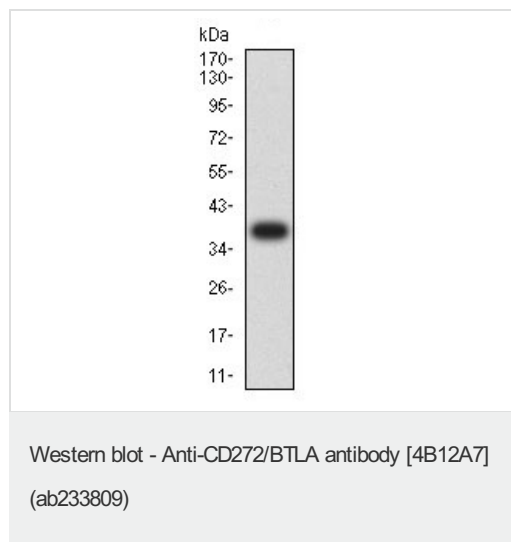
Post-translational modifications

Phosphorylated on Tyr residues by TNFRSF14 and by antigen receptors cross-linking, both inducing association with PTPN6 and PTPN11.
N-glycosylated.

Cellular localization

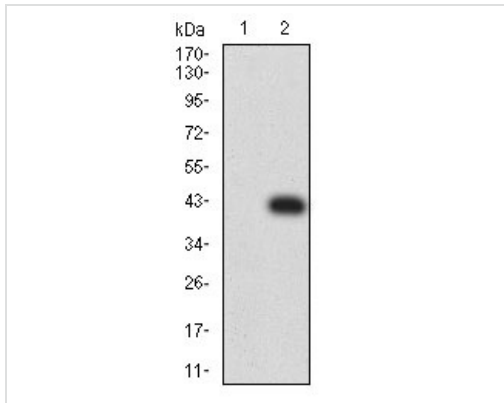
Membrane.

Images



Anti-CD272/BTLA antibody [4B12A7] (ab233809) at 1/500 dilution
+ Recombinant human CD272/BTLA (aa 179-289) protein

Expected recombinant MW is 38 kDa.

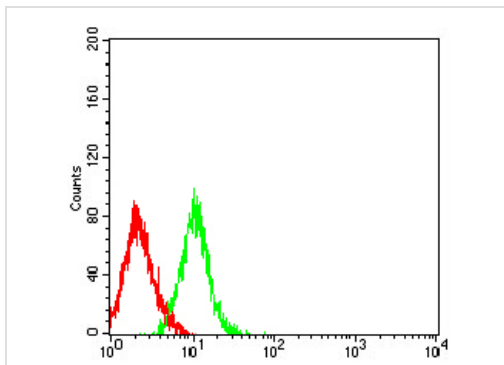


Western blot - Anti-CD272/BTLA antibody [4B12A7] (ab233809)

All lanes : Anti-CD272/BTLA antibody [4B12A7] (ab233809) at 1/500 dilution

Lane 1 : Untransfected HEK-293 (human epithelial cell line from embryonic kidney) cell lysate

Lane 2 : CD272/BTLA (aa 179-289)-hlgG-Fc-transfected HEK-293 cell lysate



Flow Cytometry - Anti-CD272/BTLA antibody [4B12A7] (ab233809)

Flow cytometric analysis of HL-60 (human promyelocytic leukemia cell line) cells labeling CD272/BTLA with ab233809 at 1/200 dilution (green) compared with a negative control (red).

Please note: All products are "FOR RESEARCH USE ONLY. NOT FOR USE IN DIAGNOSTIC PROCEDURES"

Our Abpromise to you: Quality guaranteed and expert technical support

- Replacement or refund for products not performing as stated on the datasheet
- Valid for 12 months from date of delivery
- Response to your inquiry within 24 hours
- We provide support in Chinese, English, French, German, Japanese and Spanish
- Extensive multi-media technical resources to help you
- We investigate all quality concerns to ensure our products perform to the highest standards

If the product does not perform as described on this datasheet, we will offer a refund or replacement. For full details of the Abpromise,

please visit <https://www.abcam.com/abpromise> or contact our technical team.

Terms and conditions

- Guarantee only valid for products bought direct from Abcam or one of our authorized distributors