




Product datasheet

Anti-CD272/BTLA antibody ab216505

2 Images

Overview

Product name	Anti-CD272/BTLA antibody
Description	Rabbit polyclonal to CD272/BTLA
Host species	Rabbit
Tested applications	Suitable for: IHC-P, WB
Species reactivity	Reacts with: Mouse Predicted to work with: Rat, Human 
Immunogen	Synthetic peptide within Human CD272/BTLA aa 239-289 conjugated to keyhole limpet haemocyanin. The exact sequence is proprietary. Sequence: GS EVYSNPCLEE NKPGMYASL NHSVIGPNSR LARNVKEAPT EYASICVRS Database link: Q7Z6A9  Run BLAST with  Run BLAST with
Positive control	Mouse lymphoma tissue
General notes	This product was previously labelled as CD272

Properties

Form	Liquid
Storage instructions	Shipped at 4°C. Store at +4°C short term (1-2 weeks). Upon delivery aliquot. Store at -20°C long term. Avoid freeze / thaw cycle.
Storage buffer	Preservative: 0.09% Sodium azide Constituents: 50% Glycerol, 1% BSA Aqueous buffered solution
Purity	Protein A purified
Clonality	Polyclonal
Isotype	IgG

Applications

Our [Abpromise guarantee](#) covers the use of **ab216505** in the following tested applications.

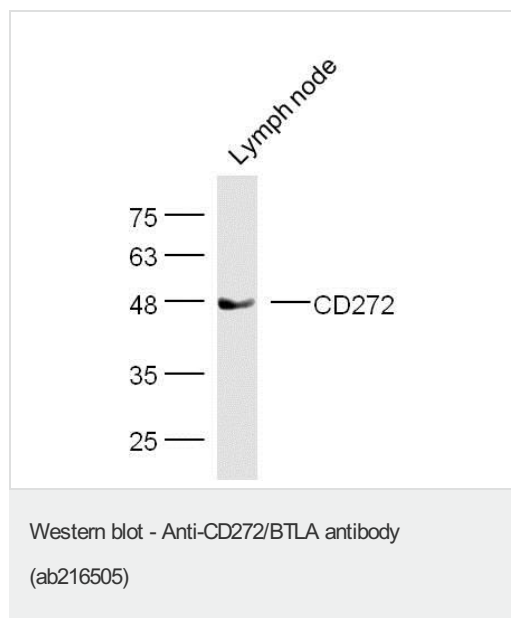
The application notes include recommended starting dilutions; optimal dilutions/concentrations should be determined by the end user.

Application	Abreviews	Notes
IHC-P		1/100 - 1/500. Perform heat mediated antigen retrieval with citrate buffer pH 6 before commencing with IHC staining protocol.
WB		1/300.

Target

Function	Lymphocyte inhibitory receptor which inhibits lymphocytes during immune response.
Sequence similarities	Contains 1 Ig-like V-type (immunoglobulin-like) domain.
Post-translational modifications	Phosphorylated on Tyr residues by TNFRSF14 and by antigen receptors cross-linking, both inducing association with PTPN6 and PTPN11. N-glycosylated.
Cellular localization	Membrane.

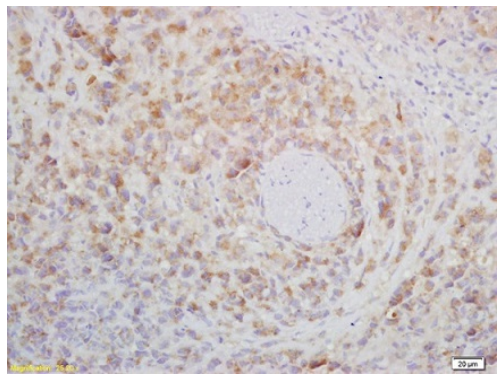
Images



Anti-CD272/BTLA antibody (ab216505) at 1/300 dilution + Mouse Lymph node

Secondary

Conjugated secondary antibody at 1/10000 dilution



Immunohistochemical analysis of formalin fixed, paraffin embedded Mouse lymphoma tissue labeling CD272/BTLA with ab216505 at 1/200 dilution.

Immunohistochemistry (Formalin/PFA-fixed paraffin-embedded sections) - Anti-CD272/BTLA antibody (ab216505)

Please note: All products are "FOR RESEARCH USE ONLY. NOT FOR USE IN DIAGNOSTIC PROCEDURES"

Our Abpromise to you: Quality guaranteed and expert technical support

- Replacement or refund for products not performing as stated on the datasheet
- Valid for 12 months from date of delivery
- Response to your inquiry within 24 hours
- We provide support in Chinese, English, French, German, Japanese and Spanish
- Extensive multi-media technical resources to help you
- We investigate all quality concerns to ensure our products perform to the highest standards

If the product does not perform as described on this datasheet, we will offer a refund or replacement. For full details of the Abpromise, please visit <https://www.abcam.com/abpromise> or contact our technical team.

Terms and conditions

- Guarantee only valid for products bought direct from Abcam or one of our authorized distributors